

# SANTA LUCIA

463,652 cbft / 5,140 sqm / 5,934 pallets



## General

Built	March-1999	International	<b>GT</b>	<b>NT</b>
Flag	Liberia	Panama Canal	8,507.00	4,734.00
Port of Registry	Monrovia	Suez Canal		7,416.00
Callsign	A8IP5			7,464.45
IMO/Lloyds nr	9194921		<b>Draft</b>	<b>DWAT</b>
Length over all [m]	143.00	Tropical	9.42	
Beam [m]	21.80	Summer	9.27	9,566
Depth [m]	13.00	Winter	9.08	9,113
Bowthruster(s)	1 x 640kW			

## Reefer

Holds	4
Hatches	4
Compartments	14
Minimum Deckheight [m]	2.20 (excl local areas)
Allowable weight of forklift including cargo	maximum 9 mt (Forklift to be equipped with minimum 4 non hard rubber airtyres)
Temperature zones	8
Cooling sections	1A   1B   2AB   2CD   3AB   3CD   4AB   4CD
Temperature range [dC]	-25
Air circulations [/hr]	90
Air renewals [/hr]	4
USDA equipped	Yes, valid until 26-September-2021
Controlled Atmosphere	CA pre-piped
Modified Atmosphere	No equipment on board



# SANTA LUCIA

463,652 cbft / 5,140 sqm / 5,934 pallets

## Classification Details

Classification Society	Bureau Veritas (BV)
Main Class symbols	I, +Hull, +MACH
Service Notations	Container ship, Refrigerated cargo ship
Navigation Notations	Unrestricted Navigation
Additional Class Notations	Ice class 1A, AUT-UMS, MON-SHAFT, +REF-CARGO-AIRCONT
Machinery	+MACH
Equivalent Finnish/Swedish	
Ice Strengthening	IA

## Reefer Compartment Capacity Breakdown

	Hold 1		Hold 2		Hold 3		Hold 4		Total	
	Cbft	Sqm	Cbft	Sqm	Cbft	Sqm	Cbft	Sqm	Cbft	Sqm
A	24,531	247.30	40,286	425.00	41,140	443.80	40,549	444.60	146,506	1,560.70
B	16,355	185.80	35,053	406.30	38,217	446.20	38,192	453.90	127,817	1,492.20
C			30,173	341.70	37,808	449.30	34,945	396.30	102,926	1,187.30
D			23,559	231.30	34,847	380.00	27,997	288.80	86,403	900.10
<b>Total</b>	<b>40,886</b>	<b>433.10</b>	<b>129,071</b>	<b>1,404.30</b>	<b>152,012</b>	<b>1,719.30</b>	<b>141,683</b>	<b>1,583.60</b>	<b>463,652</b>	<b>5,140.30</b>

### Hold 1- 4 Legend

Non insulated Deck, air passes through (aka Spar Deck)

Insulated, air tight Deck or Tanktop

Non Insulated, air tight Deck

## Hatch sizes

	Hold 1	Hold 2	Hold 3	Hold 4
	l x b	l x b	l x b	l x b
Deck	7.00 x 8.00	12.60 x 8.00	12.60 x 8.00	12.60 x 8.00
A	7.00 x 8.00	12.60 x 8.00	12.60 x 8.00	12.60 x 8.00
B		12.60 x 8.00	12.60 x 8.00	12.60 x 8.00
C		12.60 x 8.00	12.60 x 8.00	12.60 x 8.00



# SANTA LUCIA

463,652 cbft / 5,140 sqm / 5,934 pallets

Container Carrying Capacity		Max FEU's	Add. TEU's	Max TEU's	Add. FEU's
<u>On Weather Deck and Hatches</u>					
Empty Positions	Standard	128	0	236	0
Max Stackweight	Standard	120	0	156	42
Max Stackweight - Selfsustained	Standard	120	0	156	42
Empty Positions	High Cube	124	0	236	0
Max Stackweight	High Cube	116	0	156	42
Max Stackweight - Selfsustained	High Cube	116	0	156	42
<u>Reefer Hold</u>					
Empty Positions	Standard	36	6	78	0
Max Stackweight	Standard	36	6	78	0
Max Stackweight - Selfsustained	Standard	36	6	78	0
Empty Positions	High Cube	27	6	78	0
Max Stackweight - Selfsustained	High Cube	27	6	78	0

'Max Stackweight' and 'Max Stackweight - Selfsustained' are the number of laden containers that can be loaded basis the maximum stackweight, calculating 26 mt gross for a laden FEU and 14 mt gross for a laden TEU

Above figures are as per vessel's technical layout. Actual container intake is subject to master's approval and depending on stability, stackweight and visibility.

## Standard Voyage Container Carrying Capacity

Nr of High Cube (9.5') Reefers 102  
of which Selfsustained 102

'Standard Voyage' = voyage from Panama Canal to Rotterdam, with a full cargo of bananas in the holds and departing with full bunker tanks. Containers on this voyage are considered to weigh 26 mt gross.

## Reefer Plugs

Nr. of electrical Reefer Plugs 135

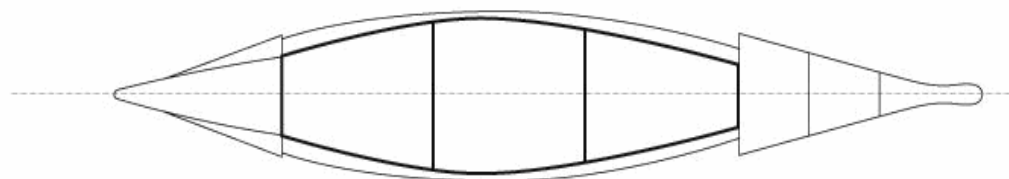
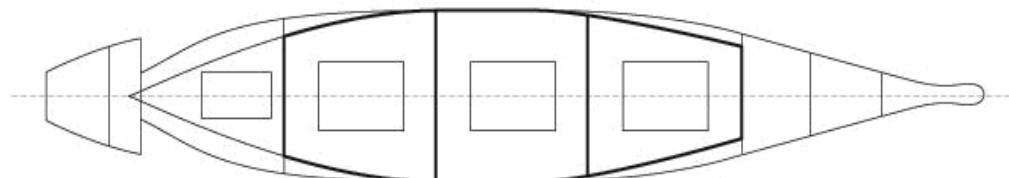
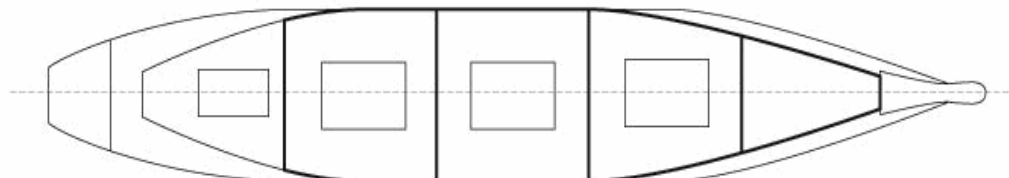
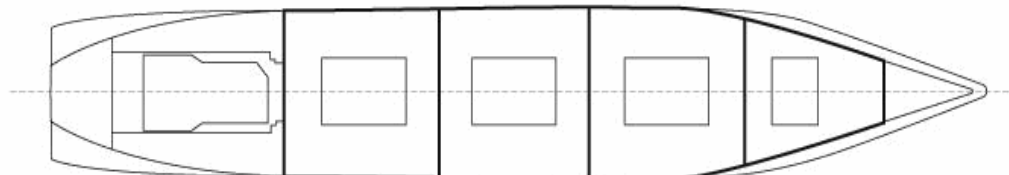
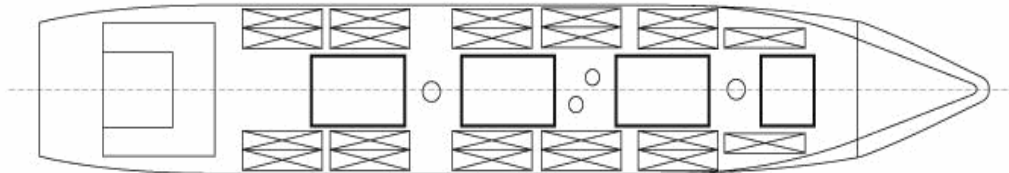
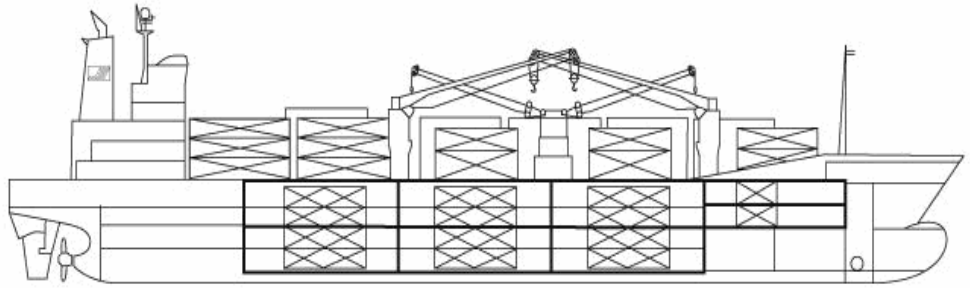
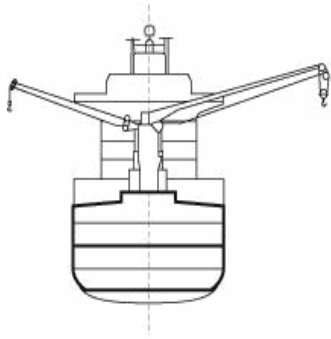
## Cargo Gear

2 Cranes x 40.0 mt  
2 Cranes x 8.0 mt



# SANTA LUCIA

463,652 cbft / 5,140 sqm / 5,934 pallets



## General Remarks

- Pallet Intake figures are indication only. The figures are based on a stowage factor of 1.32 pallet/sqm in reefer holds, full load of reefer containers based on the standard voyage with 20 pallets in each container

