

ROYAL KLIPPER

580,754 cbft / 6,613 sqm / 8,010 pallets



General

Built	February-2000	International	GT	NT
Flag	Dutch	Panama Canal	11,382.00	6,408.00
Port of Registry	Groningen	Suez Canal		10,025.00
Callsign	PCIH			10,107.81
IMO/Lloyds nr	9172959		Draft	DWAT
Length over all [m]	155.00	Tropical		
Beam [m]	24.00	Summer	10.12	12,902
Depth [m]	13.80	Winter		
Bowthruster(s)	1 x 650kW			

Reefer

Holds	4
Hatches	4
Compartments	19
Minimum Deckheight [m]	2.30 (excl local areas)
Allowable weight of forklift including cargo	maximum 9 mt (Forklift to be equipped with minimum 4 non hard rubber airtyres)
Temperature zones	8
Cooling sections	1UPDAB 1C 2UPDAB 2CD 3UPDAB 3CD 4UPDAB 4CD
Temperature range [dC]	-25 / +15
Air circulations [/hr]	90
Air renewals [/hr]	4
USDA equipped	Yes, valid until 01-September-2020
Controlled Atmosphere	CA pre-piped
Modified Atmosphere	No equipment on board



ROYAL KLIPPER

580,754 cbft / 6,613 sqm / 8,010 pallets

Classification Details

Classification Society	Bureau Veritas (BV)
Main Class symbols	I, +Hull, +Mach
Service Notations	Container ship, Refrigerated cargo ship
Navigation Notations	Unrestricted navigation
Additional Class Notations	+AUT-UMS (SS) , MON-SHAFT , +REF-CARGO, (SS)-AIRCONT , INWATERSURVEY
Machinery	+MACH
Equivalent Finnish/Swedish	
Ice Strengthening	-

Reefer Compartment Capacity Breakdown

	Hold 1		Hold 2		Hold 3		Hold 4		Total	
	Cbft	Sqm	Cbft	Sqm	Cbft	Sqm	Cbft	Sqm	Cbft	Sqm
UPD	7,108	86.00	11,890	144.00	11,890	144.00	11,890	144.00	42,778	518.00
A	41,565	420.00	47,759	532.00	46,537	517.00	41,308	469.00	177,169	1,938.00
B	25,347	290.00	44,219	500.00	46,162	522.00	38,373	437.00	154,101	1,749.00
C	15,994	191.00	37,734	436.00	44,962	516.00	32,098	368.00	130,788	1,511.00
D			25,214	300.00	28,588	338.00	22,116	259.00	75,918	897.00
Total	90,014	987.00	166,816	1,912.00	178,139	2,037.00	145,785	1,677.00	580,754	6,613.00

Hold 1-4 Legend

Non insulated Deck, air passes through (aka Spar Deck)

Insulated, air tight Deck or Tanktop

Non Insulated, air tight Deck

Hatch sizes

	Hold 1	Hold 2	Hold 3	Hold 4
	l x b	l x b	l x b	l x b
Deck	8.00 x 10.60	13.50 x 10.60	13.50 x 10.60	13.50 x 10.60
UPD	8.00 x 10.60	12.80 x 10.60	12.80 x 10.60	12.80 x 10.60
A	8.00 x 10.60	12.80 x 10.60	12.80 x 10.60	12.80 x 10.60
B	8.00 x 8.00	12.80 x 10.60	12.80 x 10.60	12.80 x 10.60
C		12.80 x 10.60	12.80 x 10.60	12.80 x 10.60



ROYAL KLIPPER

580,754 cbft / 6,613 sqm / 8,010 pallets

Container Carrying Capacity		Max FEU's	Add. TEU's	Max TEU's	Add. FEU's
<u>On Weather Deck and Hatches</u>					
Empty Positions	Standard	207	0	390	0
Max Stackweight	Standard	180	0	240	60
Max Stackweight - Selfsustained	Standard	180	0	240	60
Empty Positions	High Cube	207	0	390	0
Max Stackweight	High Cube	180	0	240	60
Max Stackweight - Selfsustained	High Cube	180	0	240	60
<u>Reefer Hold</u>					
Empty Positions	Standard	60	12	132	0
Max Stackweight	Standard	60	12	132	0
Max Stackweight - Selfsustained	Standard	60	12	132	0
Empty Positions	High Cube	60	12	132	0
Max Stackweight - Selfsustained	High Cube	60	12	132	0

'Max Stackweight' and 'Max Stackweight - Selfsustained' are the number of laden containers that can be loaded basis the maximum stackweight, calculating 26 mt gross for a laden FEU and 14 mt gross for a laden TEU

Above figures are as per vessel's technical layout. Actual container intake is subject to master's approval and depending on stability, stackweight and visibility.

Standard Voyage Container Carrying Capacity

Nr of High Cube (9.5') Reefers 150
of which Selfsustained 150

'Standard Voyage' = voyage from Panama Canal to Rotterdam, with a full cargo of bananas in the holds and departing with full bunker tanks. Containers on this voyage are considered to weigh 26 mt gross.

Reefer Plugs

Nr. of electrical Reefer Plugs 185

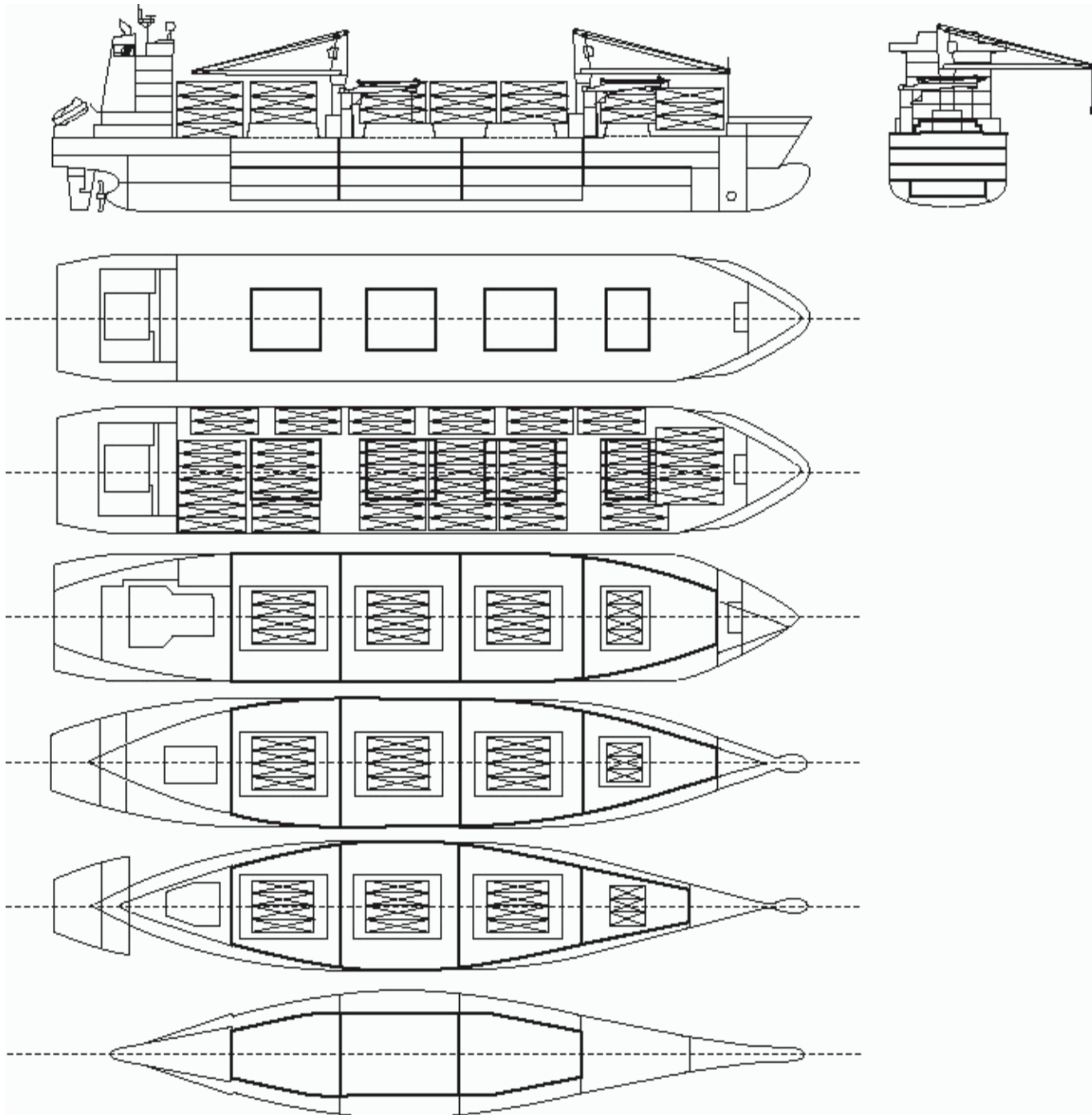
Cargo Gear

2 Cranes x 40.0 mt
2 Pallet Cranes x 8.0 mt
1 Container spreader 40ft x 0.0 mt
1 Container spreader 20ft x 0.0 mt



ROYAL KLIPPER

580,754 cbft / 6,613 sqm / 8,010 pallets



General Remarks

- Pallet Intake figures are indication only. The figures are based on a stowage factor of 1.32 pallet/sqm in reefer holds, full load of reefer containers based on the standard voyage with 20 pallets in each container

