

PACIFIC REEFER

596,925 cbft / 6,803 sqm / 8,554 pallets



General

Built	January-1999	International *)	GT	NT
Flag	Liberia	Panama Canal	00/13,055.00	7,624.00
Port of Registry	Monrovia	Suez Canal		12,166.00
Callsign	D5FE3			13,035.79
IMO/Lloyds nr	9179268		Draft	DWAT
Length over all [m]	175.72	Tropical		
Beam [m]	22.60	Summer	9.72	17,322
Depth [m]	13.30	Winter		
Bowthruster(s)	-			
		Permanent Ballast		862

*) The first GT value is the official value on the ITC. Because of the special (partly) hatchless design of the vessel, a second GT has been assigned to this vessel which is to be used for calculation of harbour duties etc. This is the second GT value. This value is also shown on the ITC in a remark.

Reefer

Holds	4
Hatches	4
Compartments	19
Minimum Deckheight [m]	2.20 (excl local areas)
Allowable weight of forklift including cargo	maximum 7 mt (Forklift to be equipped with minimum 4 non hard rubber airtyres)
Temperature zones	8
Cooling sections	1A 1BCD 2ABC 2DE 3ABC 3DE 4ABC 4DE
Temperature range [dC]	-30/+15
Air circulations [/hr]	90
Air renewals [/hr]	2
USDA equipped	Yes, valid until 15-November-2019
Controlled Atmosphere	CA pre-piped
Modified Atmosphere	No equipment on board



PACIFIC REEFER

596,925 cbft / 6,803 sqm / 8,554 pallets

Classification Details

Classification Society	Bureau Veritas (BV)
Main Class symbols	I, +Hull
Service Notations	Refrigerated Cargo Ship
Navigation Notations	Unrestricted Navigation
Additional Class Notations	+REF-CARGO, INWATERSURVEY
Machinery	+MACH
Equivalent Finnish/Swedish	
Ice Strengthening	-

Reefer Compartment Capacity Breakdown

	Hold 1		Hold 2		Hold 3		Hold 4		Total	
	Cbft	Sqm	Cbft	Sqm	Cbft	Sqm	Cbft	Sqm	Cbft	Sqm
A	35,352	398.00	18,457	202.00	18,445	203.00	18,274	202.00	90,528	1,005.00
B	26,282	268.00	36,430	433.00	36,037	431.00	39,435	467.00	138,184	1,599.00
C	17,316	181.00	37,816	453.00	41,793	497.00	41,655	480.00	138,580	1,611.00
D	14,007	157.00	33,862	391.00	40,443	479.00	36,378	410.00	124,690	1,437.00
E			31,067	339.00	42,544	483.00	31,332	329.00	104,943	1,151.00
Total	92,957	1,004.00	157,632	1,818.00	179,262	2,093.00	167,074	1,888.00	596,925	6,803.00

Hold 1- 4 Legend

Non insulated Deck, air passes through (aka Spar Deck)

Insulated, air tight Deck or Tanktop

Non Insulated, air tight Deck

Hatch sizes Reefer holds

	Hold 1	Hold 2	Hold 3	Hold 4
	l x b	l x b	l x b	l x b
Deck	8.10 x 6.00	8.10 x 6.00	8.10 x 6.00	8.10 x 6.00
A	8.10 x 6.00	8.10 x 6.00	8.10 x 6.00	8.10 x 6.00
B	8.10 x 6.00	8.10 x 6.00	8.10 x 6.00	8.10 x 6.00
C	5.20 x 5.20	8.10 x 6.00	8.10 x 6.00	8.10 x 6.00
D		8.10 x 6.00	8.10 x 6.00	8.10 x 6.00



PACIFIC REEFER

596,925 cbft / 6,803 sqm / 8,554 pallets

Container slot flexibility

Hold

Deck & Hatches

Total

Homogeneous intake of TEU's of 14mt:

Actual intake and distribution always subject to ao vessel's stability, trim, bending moments, sheer forces, deadweight, permissible weights, permissible lashing gear break loads, container lashing and stowage plans, ranges of visibility, IMDG stowage/segregation requirements, Panama / Suez Canal Regulations and Cargo Securing Manual.

Reefer Plugs

Deck:

Holds:

Total:

Remote Reefer Monitoring System

Type:

Maker:

Version:

RDC handheld available:

Fittings

Permissible Stackloads

Hatch sizes

<u>Hold</u>	<u>Hatches # / Type</u>	<u>Position</u>	<u>length x width</u>	<u>Panels #</u>	<u>Position</u>	<u>length x width</u>	<u>Panels #</u>
X	0 Open Top	None	N/A	0			
Y	0 Open Top	None	N/A	0			

Standard Voyage Container Carrying Capacity

Nr of High Cube (9.5') Reefers	170
of which Selfsustained	170

'Standard Voyage' = voyage from Panama Canal to Rotterdam, with a full cargo of bananas in the holds and departing with full bunker tanks. Containers on this voyage are considered to weigh 26 mt gross.

Reefer Plugs

Nr. of electrical Reefer Plugs	200
--------------------------------	-----

General Note Container Carrying Capacity

Figures for container intake on standard voyage are preliminary



PACIFIC REEFER

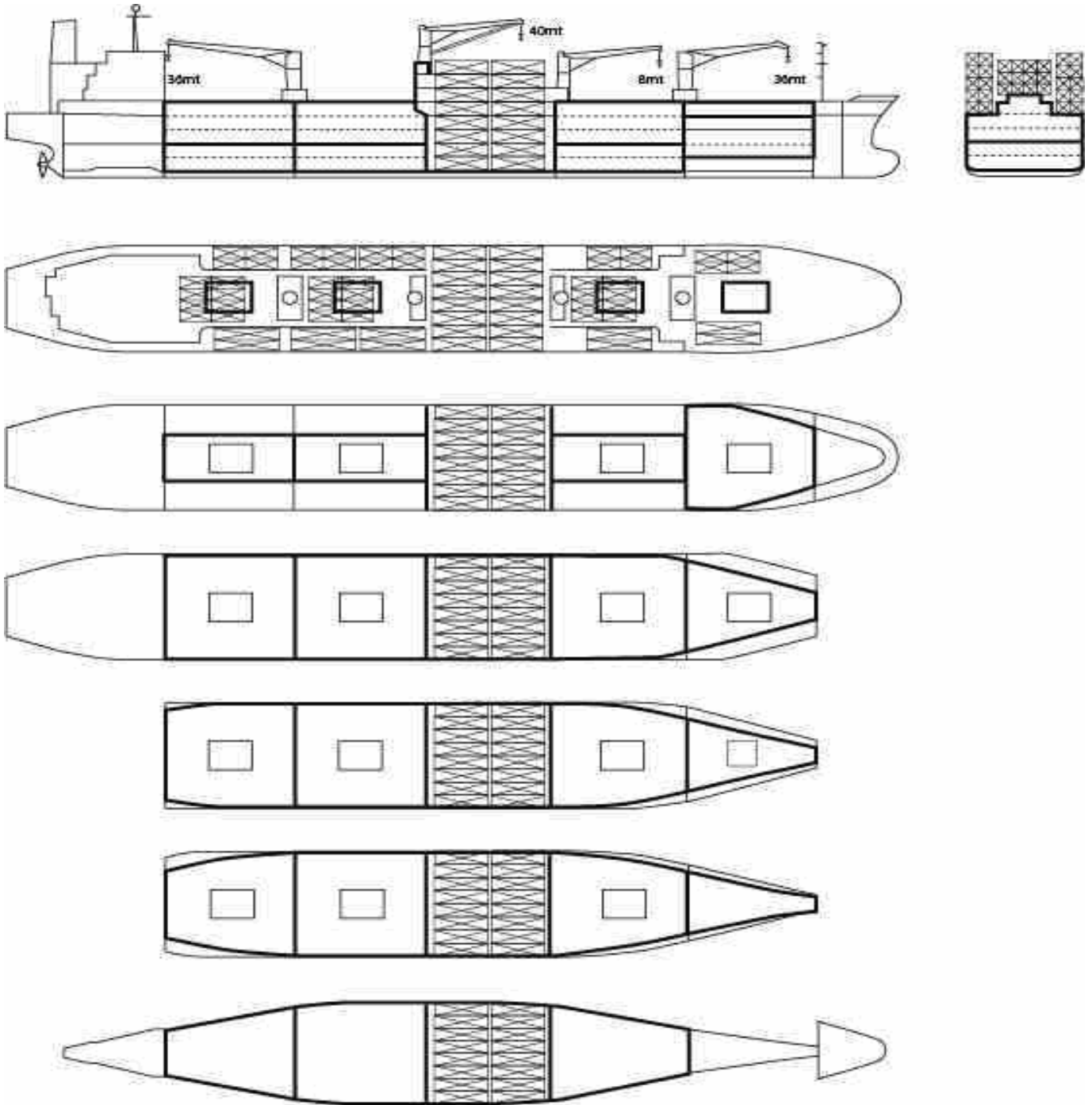
596,925 cbft / 6,803 sqm / 8,554 pallets

Cargo Gear

2 Cranes x 36.0 mt

1 Crane x 8.0 mt

1 Crane x 40.0 mt



General Remarks

- Pallet Intake figures are indication only. The figures are based on a stowage factor of 1.32 pallet/sqm in reefer holds, full load of reefer containers based on the standard voyage with 20 pallets in each container

