

PACIFIC MERMAID

540,572 cbft / 6,075 sqm / 5,742 pallets



General

Built	February-1992	International	GT	NT
Flag	Liberia	Panama Canal	9,820.00	3,538.00
Port of Registry	Monrovia	Suez Canal		8,653.60
Callsign	A8JJ5			8,902.36
IMO/Lloyds nr	9045924		Draft	DWAT
Length over all [m]	141.80	Tropical	9.16	10,891
Beam [m]	22.80	Summer	8.82	10,461
Depth [m]	13.00	Winter	8.63	10,029
Bowthruster(s)	-			

Reefer

Holds	4
Hatches	4
Compartments	20
Minimum Deckheight [m]	2.20 (excl local areas)
Allowable weight of forklift including cargo	maximum 5 mt (Forklift to be equipped with minimum 4 non hard rubber airtyres)
Temperature zones	8
Cooling sections	1UPDA 1BCD 2UPDAB 2CD 3UPDAB 3CD 4UPDAB 4CD
Temperature range [dC]	
Air circulations [/hr]	90
Air renewals [/hr]	4
USDA equipped	Yes, valid until 05-October-2022
Controlled Atmosphere	CA pre-piped
Modified Atmosphere	No equipment on board



PACIFIC MERMAID

540,572 cbft / 6,075 sqm / 5,742 pallets

Classification Details

Classification Society	Bureau Veritas (BV)
Main Class symbols	I, +HULL, +MACH
Service Notations	+Refrigerated cargo ship
Navigation Notations	Unrestricted Navigation
Additional Class Notations	+AUT-UMS, REF-CARGO-AIRCONT, ICE
Machinery	+MACH
Equivalent Finnish/Swedish	
Ice Strengthening	-

Reefer Compartment Capacity Breakdown

	Hold 1		Hold 2		Hold 3		Hold 4		Total	
	Cbft	Sqm	Cbft	Sqm	Cbft	Sqm	Cbft	Sqm	Cbft	Sqm
UPD	6,938	68.79	6,862	68.79	6,862	68.79	6,862	68.79	27,524	275.16
A	37,211	416.21	35,358	417.64	35,598	425.55	39,718	474.80	147,885	1,734.20
B	31,028	306.03	34,353	401.47	35,770	428.89	39,910	475.15	141,061	1,611.54
C	20,420	213.32	32,628	355.17	35,661	426.56	33,663	383.09	122,372	1,378.14
D	14,864	161.26	25,573	269.39	34,006	378.02	27,287	266.97	101,730	1,075.64
Total	110,461	1,165.61	134,774	1,512.46	147,897	1,727.81	147,440	1,668.80	540,572	6,074.68

Hold 1-4 Legend

Non insulated Deck, air passes through (aka Spar Deck)

Insulated, air tight Deck or Tanktop

Non Insulated, air tight Deck

Hatch sizes

	Hold 1	Hold 2	Hold 3	Hold 4
	l x b	l x b	l x b	l x b
Deck	7.60 x 7.10	7.60 x 7.10	7.60 x 7.10	7.60 x 7.10
UPD	7.65 x 7.19	7.65 x 7.19	7.65 x 7.19	7.65 x 7.19
A	7.64 x 6.90	7.64 x 6.90	7.64 x 6.90	7.64 x 6.90
B	7.63 x 6.90	7.64 x 6.90	7.64 x 6.90	7.64 x 6.90
C	7.64 x 4.20	7.64 x 6.90	7.64 x 6.90	7.64 x 6.90



PACIFIC MERMAID

540,572 cbft / 6,075 sqm / 5,742 pallets

Container Carrying Capacity		Max FEU's	Add. TEU's	Max TEU's	Add. FEU's
<u>On Weather Deck and Hatches</u>					
Empty Positions	Standard	73	0	140	13
Max Stackweight	Standard	65	0	80	9
Max Stackweight - Self-sustained	Standard	65	0	80	9
Empty Positions	High Cube	73	0	80	9
Max Stackweight	High Cube	57	0	80	9
Max Stackweight - Self-sustained	High Cube	57	0	80	9
<u>Reefer Hold</u>					
Empty Positions	Standard	0	0	0	0
Max Stackweight	Standard	0	0	0	0
Max Stackweight - Self-sustained	Standard	0	0	0	0

'Max Stackweight' and 'Max Stackweight - Self-sustained' are the number of laden containers that can be loaded basis the maximum stackweight, calculating 26 mt gross for a laden FEU and 14 mt gross for a laden TEU

Above figures are as per vessel's technical layout. Actual container intake is subject to master's approval and depending on stability, stackweight and visibility.

Standard Voyage Container Carrying Capacity

Nr of High Cube (9.5') Reefers 57
of which Self-sustained 57

'Standard Voyage' = voyage from Panama Canal to Rotterdam, with a full cargo of bananas in the holds and departing with full bunker tanks. Containers on this voyage are considered to weigh 26 mt gross.

Reefer Plugs

Nr. of electrical Reefer Plugs 65

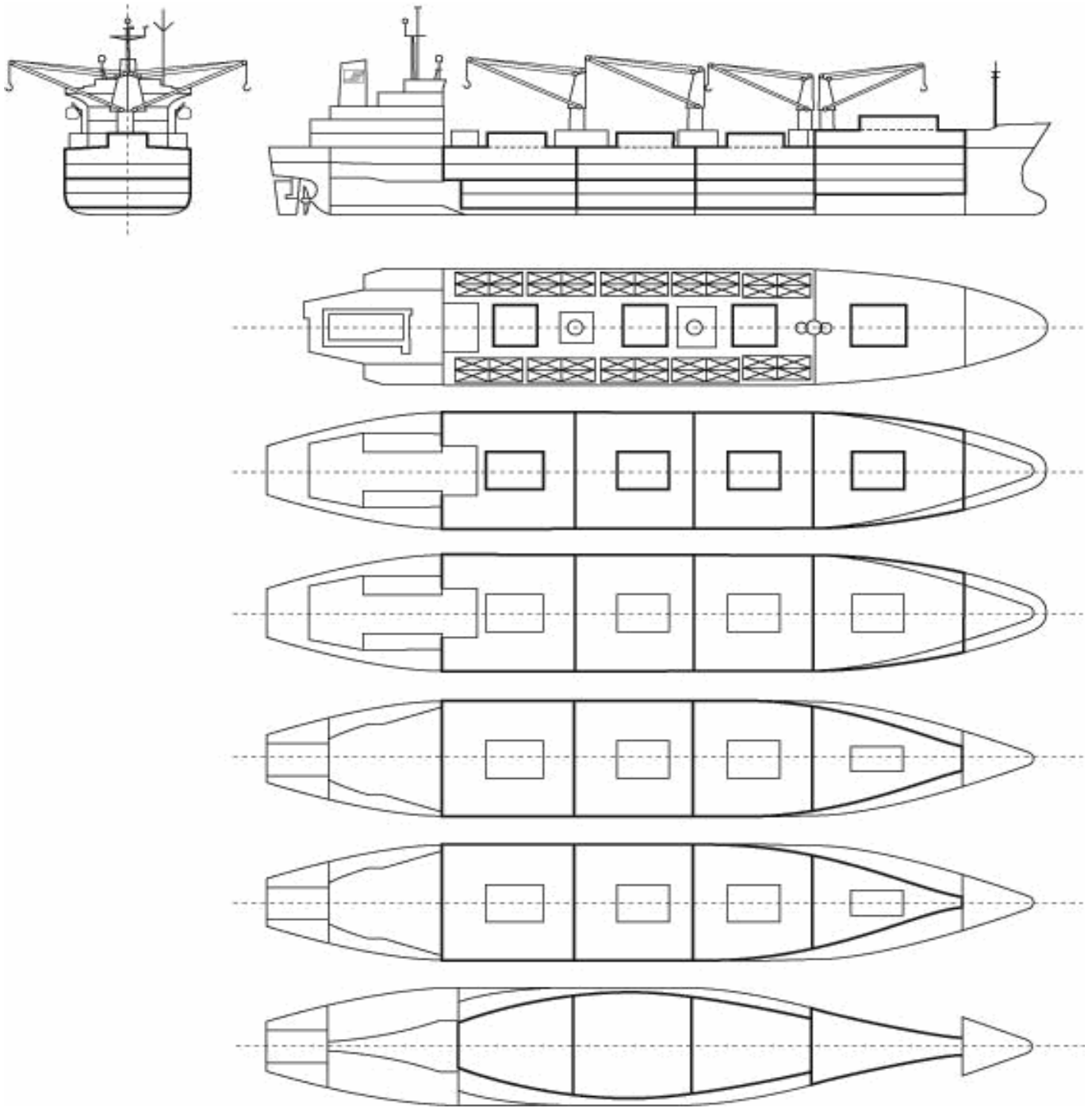
Cargo Gear

2 Cranes x 30.0 mt
2 Cranes x 10.0 mt



PACIFIC MERMAID

540,572 cbft / 6,075 sqm / 5,742 pallets



General Remarks

- Pallet Intake figures are indication only. The figures are based on a stowage factor of 1.32 pallet/sqm in reefer holds, full load of reefer containers based on the standard voyage with 20 pallets in each container

