

# LOMBOK STRAIT

626,011 cbft / 7,341 sqm / 9,681 pallets



## General

Built	August-2002	International	<b>GT</b>	<b>NT</b>
Flag	Malta	Panama Canal	14,413.00	7,536.00
Port of Registry	Valletta	Suez Canal		12,563.00
Callsign	9HA3797			12,848.00
IMO/Lloyds nr	9204958		<b>Draft</b>	<b>DWAT</b>
Length over all [m]	167.00	Tropical		
Beam [m]	25.00	Summer	10.00	15,917
Depth [m]	13.40	Winter		
Bowthruster(s)	1 x 770kW			

## Reefer

Holds	4
Hatches	4
Compartments	15
Minimum Deckheight [m]	2.25 (excl local areas)
Allowable weight of forklift including cargo	maximum 5 mt (Forklift to be equipped with minimum 4 non hard rubber airtyres)
Temperature zones	8
Cooling sections	1FC   1AB   2AB   2CD   3AB   3CD   4AB   4CD
Temperature range [dC]	
Air circulations [/hr]	90
Air renewals [/hr]	2
USDA equipped	Yes, valid until 01-February-2020
Controlled Atmosphere	Fully CA fitted, including own CA plant
Modified Atmosphere	Yes, ship owned MA plant



# LOMBOK STRAIT

626,011 cbft / 7,341 sqm / 9,681 pallets

## Classification Details

Classification Society	Bureau Veritas (BV)
Main Class symbols	I
Service Notations	+Container ship, Refrigerated cargo ship
Navigation Notations	Unrestricted Navigation
Additional Class Notations	Ice III, +AUT-UMS, +SYS-NEQ-1, MON-SHAFT, +REF-CARGO-AIRCONT, INWATERSURVEY
Machinery	+MACH
Equivalent Finnish/Swedish	
Ice Strengthening	-

## Reefer Compartment Capacity Breakdown

	Hold 1		Hold 2		Hold 3		Hold 4		Total	
	Cbft	Sqm	Cbft	Sqm	Cbft	Sqm	Cbft	Sqm	Cbft	Sqm
FC	47,441	554.66							47,441	554.66
A	27,797	327.69	52,133	614.60	57,199	674.30	48,589	572.80	185,718	2,189.39
B	14,693	174.08	45,853	543.29	56,447	669.44	48,239	571.54	165,232	1,958.35
C			38,542	441.33	57,100	653.28	43,309	495.91	138,951	1,590.52
D			24,048	284.19	42,221	498.98	22,400	264.46	88,669	1,047.63
<b>Total</b>	<b>89,931</b>	<b>1,056.43</b>	<b>160,576</b>	<b>1,883.41</b>	<b>212,967</b>	<b>2,496.00</b>	<b>162,537</b>	<b>1,904.71</b>	<b>626,011</b>	<b>7,340.55</b>

Hold 1-4 Legend

Non insulated Deck, air passes through (aka Spar Deck)

Insulated, air tight Deck or Tanktop

Non Insulated, air tight Deck

## Hatch sizes

	Hold 1	Hold 2	Hold 3	Hold 4
	l x b	l x b	l x b	l x b
Deck	3.30 x 6.00	3.30 x 6.00	3.30 x 6.00	3.30 x 6.00
FC	3.30 x 6.00	-		
A	3.30 x 6.00	3.30 x 6.00	3.30 x 6.00	3.30 x 6.00
B		3.30 x 6.00	3.30 x 6.00	3.30 x 6.00
C		3.30 x 6.00	3.30 x 6.00	3.30 x 6.00



# LOMBOK STRAIT

626,011 cbft / 7,341 sqm / 9,681 pallets

Container Carrying Capacity		Max FEU's	Add. TEU's	Max TEU's	Add. FEU's
<u>On Weather Deck and Hatches</u>					
Empty Positions	Standard	220	0	440	0
Max Stackweight	Standard	206	0	440	0
Max Stackweight - Self-sustained	Standard	206	0	440	0
Empty Positions	High Cube	220	0	440	0
Max Stackweight	High Cube	206	0	440	0
Max Stackweight - Self-sustained	High Cube	206	0	440	0
<u>Reefer Hold</u>					
Empty Positions	Standard	0	0	0	0
Max Stackweight	Standard	0	0	0	0
Max Stackweight - Self-sustained	Standard	0	0	0	0
Empty Positions	High Cube	0	0	0	0
Max Stackweight - Self-sustained	High Cube	0	0	0	0

'Max Stackweight' and 'Max Stackweight - Self-sustained' are the number of laden containers that can be loaded basis the maximum stackweight, calculating 26 mt gross for a laden FEU and 14 mt gross for a laden TEU

Above figures are as per vessel's technical layout. Actual container intake is subject to master's approval and depending on stability, stackweight and visibility.

## Standard Voyage Container Carrying Capacity

Nr of High Cube (9.5') Reefers      206  
of which Self-sustained              206

'Standard Voyage' = voyage from Panama Canal to Rotterdam, with a full cargo of bananas in the holds and departing with full bunker tanks. Containers on this voyage are considered to weigh 26 mt gross.

## Reefer Plugs

Nr. of electrical Reefer Plugs      206

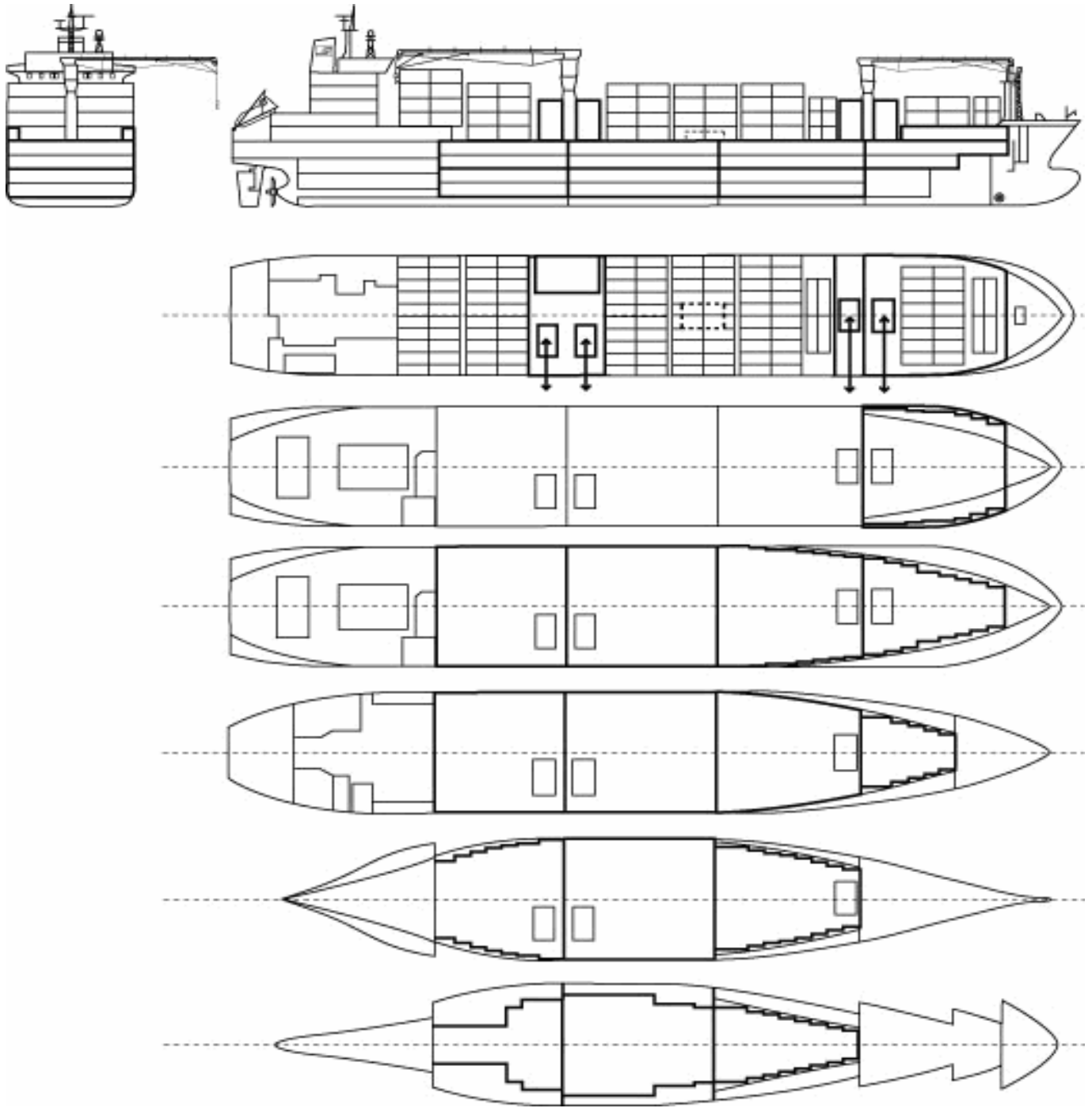
## Cargo Gear

2 Cranes x 45.0 mt  
4 Sideloaders x 12.5 mt  
1 Container spreader 40ft x 0.0 mt  
1 Container spreader 20ft x 0.0 mt



# LOMBOK STRAIT

626,011 cbft / 7,341 sqm / 9,681 pallets



## General Remarks

- Pallet Intake figures are indication only. The figures are based on a stowage factor of 1.32 pallet/sqm in reefer holds, full load of reefer containers based on the standard voyage with 20 pallets in each container

