

LADY ROSEBUD

560,211 cbft / 6,062 sqm / 4,592 pallets

No
Picture
Available

General

Built	September-2009	International	GT 9,576.00	NT 5,562.00
Flag	Panama	Panama Canal		0.00
Port of Registry	Panama	Suez Canal		0.00
Callsign	3FAF5			
IMO/Lloyds nr	9412749		Draft	DWAT
Length over all [m]	143.00	Tropical	9.20	11,100
Beam [m]	22.70	Summer	9.01	10,608
Depth [m]	13.40	Winter	8.82	10,185
Bowthruster(s)	-			

Reefer

Holds	4
Hatches	4
Compartments	15
Minimum Deckheight [m]	0.00 (excl local areas)
Allowable weight of forklift including cargo	maximum 5 mt (Forklift to be equipped with minimum 4 non hard rubber airtyres)
Temperature zones	8
Cooling sections	1AB 1C 2AB 2CD 3AB 3CD 4AB 4CD
Temperature range [dC]	-25/+15
Air circulations [/hr]	45/60/90
Air renewals [/hr]	3
USDA equipped	Yes, valid until 12-January-2023
Controlled Atmosphere	None
Modified Atmosphere	No equipment on board

Classification Details

Classification Society	Nippon Kaiji Kyokai (NKK)
Classification characters	NS*(EQ C V)(IWS)(PSCM)/MNS*
Installation characters	RMC*.CA(-25/32 eqF for ACh), CHG, MPP, LSA, RCF, AFS, BWM
Special Description	
Other Classification	



LADY ROSEBUD

560,211 cbft / 6,062 sqm / 4,592 pallets

Reefer Compartment Capacity Breakdown

	Hold 1		Hold 2		Hold 3		Hold 4		Total	
	Cbft	Sqm	Cbft	Sqm	Cbft	Sqm	Cbft	Sqm	Cbft	Sqm
A	43,327	421.68	43,006	488.09	40,543	459.44	42,944	491.06	169,820	1,860.27
B	30,432	309.51	40,147	451.65	38,341	438.84	40,368	451.49	149,288	1,651.49
C	23,101	244.22	39,570	427.27	40,236	457.28	38,173	413.75	141,080	1,542.52
D			31,457	306.76	38,007	399.98	30,559	300.48	100,023	1,007.22
Total	96,860	975.41	154,180	1,673.77	157,127	1,755.54	152,044	1,656.78	560,211	6,061.50

Hold 1- 4 Legenda

Non insulated Deck, air passes through (aka Spar Deck)

Insulated, air tight Deck or Tanktop

Non Insulated, air tight Deck

Hatch sizes

	Hold 1	Hold 2	Hold 3	Hold 4
	l x b	l x b	l x b	l x b
Deck	6.50 x 7.40	6.50 x 7.40	6.50 x 7.40	6.50 x 7.40
A	6.50 x 7.40	6.50 x 7.40	6.50 x 7.40	6.50 x 7.40
B	6.00 x 6.00	6.50 x 7.40	6.50 x 7.40	6.50 x 7.40
C		6.50 x 7.40	6.50 x 7.40	6.50 x 7.40

Container Carrying Capacity	Max FEU's	Add. TEU's	Max TEU's	Add. FEU's	
<u>On Weather Deck and Hatches</u>					
Empty Positions	Standard	100	0	152	24
Max Stackweight	Standard	100	0	152	24
Max Stackweight - Self-sustained	Standard	100	0	152	24
Empty Positions	High Cube	100	0	152	24
Max Stackweight	High Cube	100	0	152	24
Max Stackweight - Self-sustained	High Cube	100	0	152	24
<u>Reefer Hold</u>					
Empty Positions	Standard	0	0	24	0
Max Stackweight	Standard	0	0	24	0
Max Stackweight - Self-sustained	Standard	0	0	24	0

'Max Stackweight' and 'Max Stackweight - Self-sustained' are the number of laden containers that can be loaded basis the maximum stackweight, calculating 26 mt gross for a laden FEU and 14 mt gross for a laden TEU

Above figures are as per vessel's technical layout. Actual container intake is subject to master's approval and depending on stability, stackweight and visibility.



LADY ROSEBUD

560,211 cbft / 6,062 sqm / 4,592 pallets

Standard Voyage Container Carrying Capacity

Nr of High Cube (9.5') Reefers	0
of which Selfsustained	0

'Standard Voyage' = voyage from Panama Canal to Rotterdam, with a full cargo of bananas in the holds and departing with full bunker tanks. Containers on this voyage are considered to weigh 26 mt gross.

Reefer Plugs

Nr. of electrical Reefer Plugs	100
--------------------------------	-----

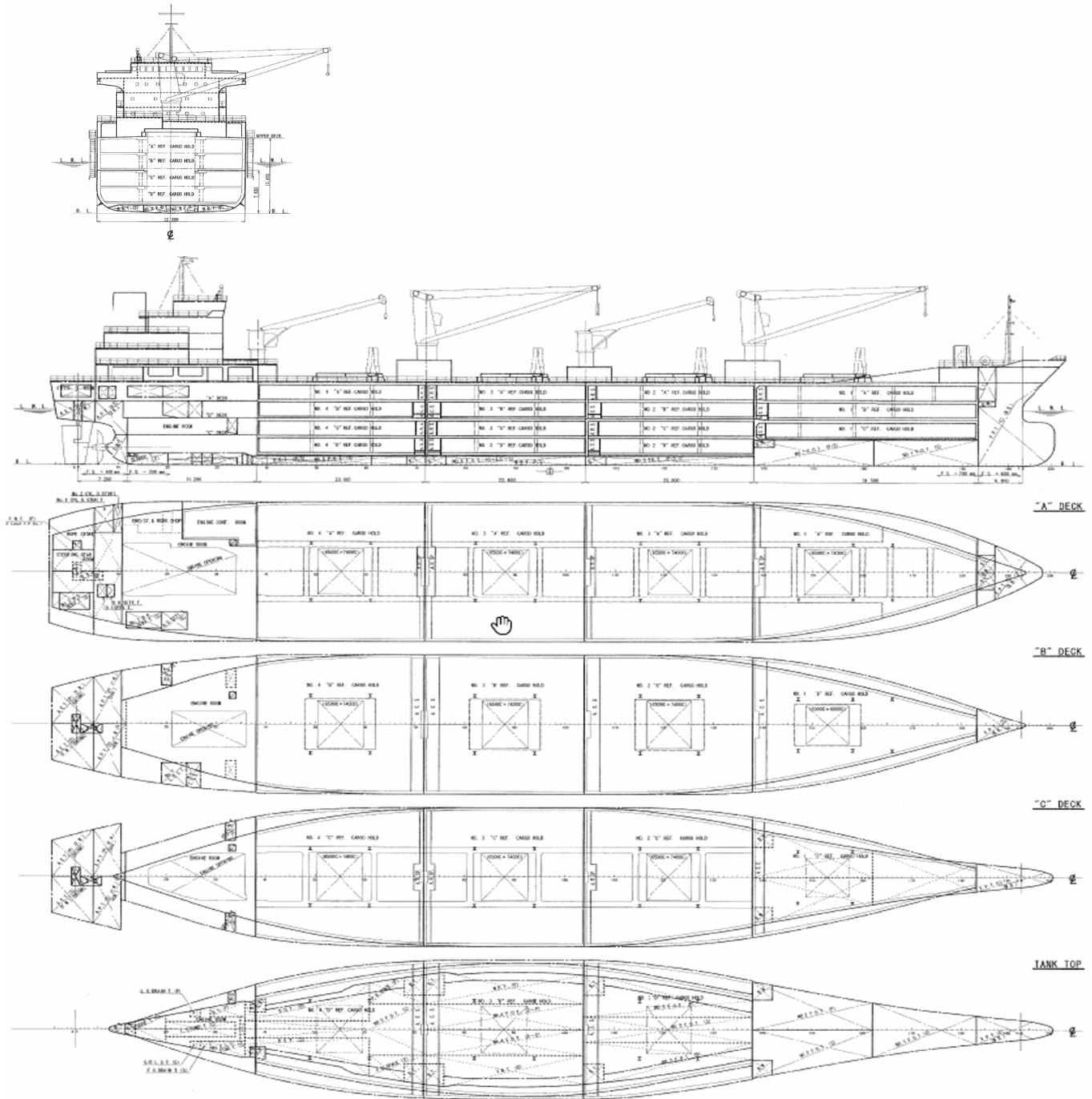
Cargo Gear

2 Cranes x 40.0 mt
2 Cranes x 8.0 mt



LADY ROSEBUD

560,211 cbft / 6,062 sqm / 4,592 pallets



General Remarks

- Pallet Intake figures are indication only. The figures are based on a stowage factor of 1.32 pallet/sqm in reefer holds, full load of reefer containers based on the standard voyage with 20 pallets in each container

