

LADY ROSEBAY

552,613 cbft / 6,062 sqm / 4,592 pallets



General

Built	March-2010	International	GT 9,603.00	NT 5,562.00
Flag	Panama	Panama Canal		0.00
Port of Registry	Panama	Suez Canal		0.00
Callsign	3FJA8			
IMO/Lloyds nr	9412751		Draft	DWAT
Length over all [m]	143.00	Tropical	9.20	11,602
Beam [m]	22.70	Summer	9.01	10,601
Depth [m]	13.40	Winter	8.82	10,137
Bowthruster(s)	-			

Reefer

Holds	4
Hatches	4
Compartments	15
Minimum Deckheight [m]	2.30 (excl local areas)
Allowable weight of forklift including cargo	maximum 5 mt (Forklift to be equipped with minimum 4 non hard rubber airtyres)
Temperature zones	8
Cooling sections	1AB 1C 2AB 2CD 3AB 3CD 4AB 4CD
Temperature range [dC]	-25/+15
Air circulations [/hr]	45/60/90
Air renewals [/hr]	3
USDA equipped	Yes, certificate expired
Controlled Atmosphere	None
Modified Atmosphere	No equipment on board

Classification Details

Classification Society	Nippon Kaiji Kyokai (NKK)
Classification characters	NS*(EQ C V)(IWS)(PSCM)/MNS*
Installation characters	RMC*.CA(-25/32 eqF for ACh), CHG, MPP, LSA, RCF, AFS
Special Description	
Other Classification	



LADY ROSEBAY

552,613 cbft / 6,062 sqm / 4,592 pallets

Reefer Compartment Capacity Breakdown

	Hold 1		Hold 2		Hold 3		Hold 4		Total	
	Cbft	Sqm	Cbft	Sqm	Cbft	Sqm	Cbft	Sqm	Cbft	Sqm
A	41,410	421.68	41,162	488.09	38,646	459.44	41,094	491.06	162,312	1,860.27
B	30,432	309.51	40,147	451.65	38,341	438.84	40,368	451.49	149,288	1,651.49
C	23,069	244.22	39,524	427.27	40,223	457.28	38,173	413.75	140,989	1,542.52
D			31,458	306.76	38,007	399.98	30,559	300.48	100,024	1,007.22
Total	94,911	975.41	152,291	1,673.77	155,217	1,755.54	150,194	1,656.78	552,613	6,061.50

Hold 1- 4 Legenda

Non insulated Deck, air passes through (aka Spar Deck)

Insulated, air tight Deck or Tanktop

Non Insulated, air tight Deck

Hatch sizes

	Hold 1	Hold 2	Hold 3	Hold 4
	l x b	l x b	l x b	l x b
Deck	6.50 x 7.40	6.50 x 7.40	6.50 x 7.40	6.50 x 7.40
A	6.50 x 7.40	6.50 x 7.40	6.50 x 7.40	6.50 x 7.40
B	6.00 x 6.00	6.50 x 7.40	6.50 x 7.40	6.50 x 7.40
C		6.50 x 7.40	6.50 x 7.40	6.50 x 7.40

Container Carrying Capacity	Max FEU's	Add. TEU's	Max TEU's	Add. FEU's	
<u>On Weather Deck and Hatches</u>					
Empty Positions	Standard	100	0	152	24
Max Stackweight	Standard	100	0	152	24
Max Stackweight - Self-sustained	Standard	100	0	152	24
Empty Positions	High Cube	100	0	152	24
Max Stackweight	High Cube	100	0	152	24
Max Stackweight - Self-sustained	High Cube	100	0	152	24
<u>Reefer Hold</u>					
Empty Positions	Standard	0	0	24	0
Max Stackweight	Standard	0	0	24	0
Max Stackweight - Self-sustained	Standard	0	0	24	0

'Max Stackweight' and 'Max Stackweight - Self-sustained' are the number of laden containers that can be loaded basis the maximum stackweight, calculating 26 mt gross for a laden FEU and 14 mt gross for a laden TEU

Above figures are as per vessel's technical layout. Actual container intake is subject to master's approval and depending on stability, stackweight and visibility.



LADY ROSEBAY

552,613 cbft / 6,062 sqm / 4,592 pallets

Standard Voyage Container Carrying Capacity

Nr of High Cube (9.5') Reefers	0
of which Selfsustained	0

'Standard Voyage' = voyage from Panama Canal to Rotterdam, with a full cargo of bananas in the holds and departing with full bunker tanks. Containers on this voyage are considered to weigh 26 mt gross.

Reefer Plugs

Nr. of electrical Reefer Plugs	100
--------------------------------	-----

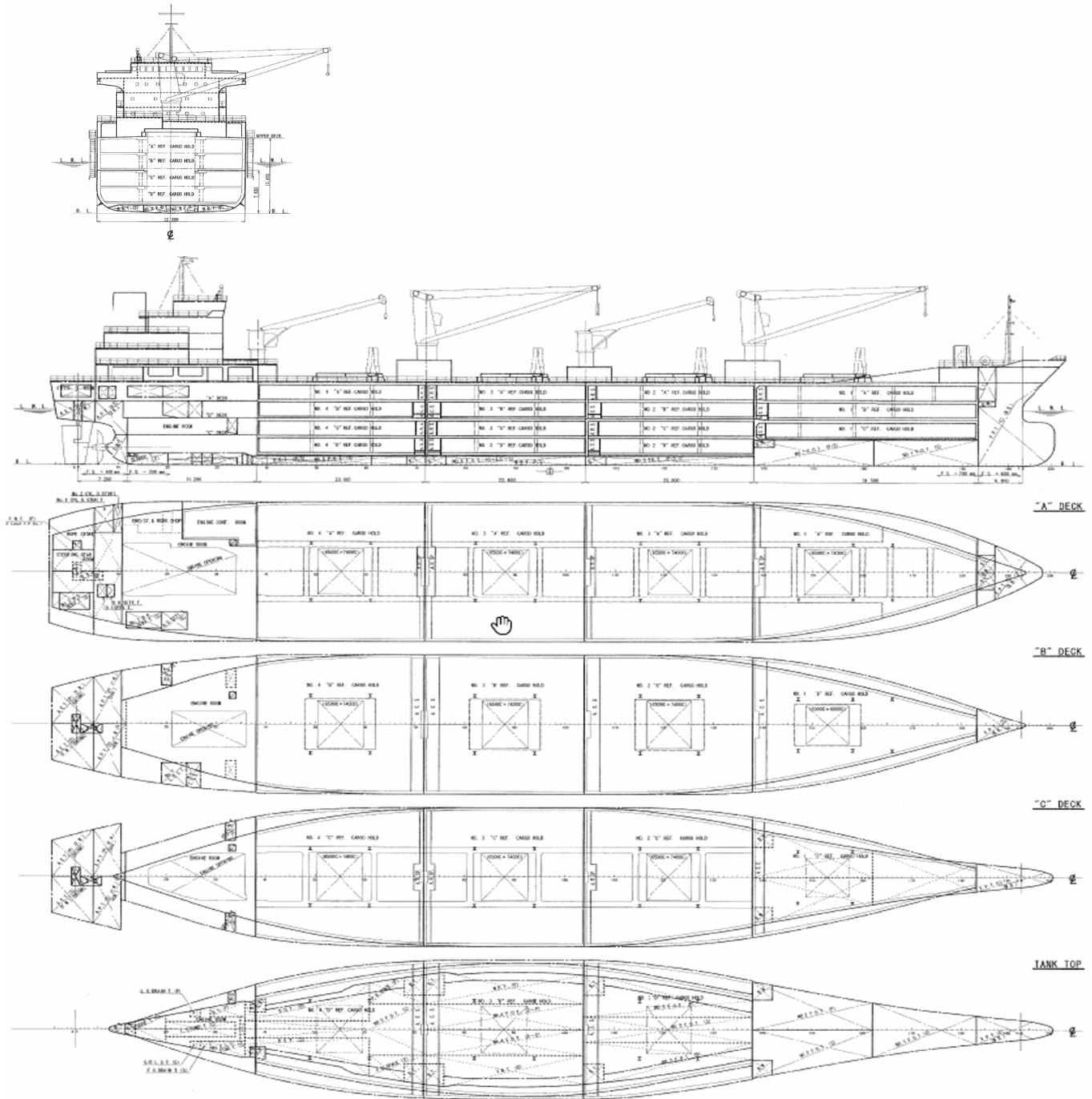
Cargo Gear

2 Cranes x 40.0 mt
2 Cranes x 8.0 mt



LADY ROSEBAY

552,613 cbft / 6,062 sqm / 4,592 pallets



General Remarks

- Pallet Intake figures are indication only. The figures are based on a stowage factor of 1.32 pallet/sqm in reefer holds, full load of reefer containers based on the standard voyage with 20 pallets in each container

