

LADY ROSE

560,333 cbft / 6,062 sqm / 4,592 pallets



General

| | | | | |
|---------------------|----------------|---------------|--------------|-------------|
| Built | September-2007 | International | GT | NT |
| Flag | Panama | Panama Canal | 9,576.00 | 5,562.00 |
| Port of Registry | Panama | Suez Canal | | 0.00 |
| Callsign | 3EML2 | | | 0.00 |
| IMO/Lloyds nr | 9355032 | | Draft | DWAT |
| Length over all [m] | 143.00 | Tropical | 0.00 | 0 |
| Beam [m] | 22.70 | Summer | 9.01 | 10,630 |
| Depth [m] | 13.40 | Winter | 0.00 | 0 |
| Bowthruster(s) | - | | | |

Reefer

| | |
|--|--|
| Holds | 4 |
| Hatches | 4 |
| Compartments | 15 |
| Minimum Deckheight [m] | 2.30 (excl local areas) |
| Allowable weight of forklift including cargo | maximum 5 mt (Forklift to be equipped with minimum 4 non hard rubber airtyres) |
| Temperature zones | 8 |
| Cooling sections | 1AB 1C 2AB 2CD 3AB 3CD 4AB 4CD |
| Temperature range [dC] | -25/+15 |
| Air circulations [/hr] | 90/60/45 |
| Air renewals [/hr] | 3 |
| USDA equipped | Yes, certificate expired |
| Controlled Atmosphere | None |
| Modified Atmosphere | No equipment on board |

Classification Details

| | |
|---------------------------|--|
| Classification Society | Nippon Kaiji Kyokai (NKK) |
| Classification characters | NS*(EQ C V)(IWS)(PSCM)/MNS* |
| Installation characters | RMC*.CA(-25/32 eqF for ACh), CHG, MPP, LSA, RCF, AFS |
| Special Description | |
| Other Classification | |



LADY ROSE

560,333 cbft / 6,062 sqm / 4,592 pallets

Reefer Compartment Capacity Breakdown

| | Hold 1 | | Hold 2 | | Hold 3 | | Hold 4 | | Total | |
|--------------|---------------|---------------|----------------|-----------------|----------------|-----------------|----------------|-----------------|----------------|-----------------|
| | Cbft | Sqm | Cbft | Sqm | Cbft | Sqm | Cbft | Sqm | Cbft | Sqm |
| A | 43,369 | 421.68 | 43,046 | 488.09 | 40,566 | 459.44 | 43,123 | 491.06 | 170,104 | 1,860.27 |
| B | 30,424 | 309.51 | 40,147 | 451.65 | 38,340 | 438.84 | 40,368 | 451.49 | 149,279 | 1,651.49 |
| C | 23,158 | 244.22 | 39,563 | 427.27 | 40,227 | 457.28 | 37,977 | 413.75 | 140,925 | 1,542.52 |
| D | | | 31,457 | 306.76 | 38,007 | 399.98 | 30,561 | 300.48 | 100,025 | 1,007.22 |
| Total | 96,951 | 975.41 | 154,213 | 1,673.77 | 157,140 | 1,755.54 | 152,029 | 1,656.78 | 560,333 | 6,061.50 |

Hold 1- 4 Legenda

Non insulated Deck, air passes through (aka Spar Deck)

Insulated, air tight Deck or Tanktop

Non Insulated, air tight Deck

Hatch sizes

| | Hold 1 | Hold 2 | Hold 3 | Hold 4 |
|------|-------------|-------------|-------------|-------------|
| | l x b | l x b | l x b | l x b |
| Deck | 6.50 x 7.40 | 6.50 x 7.40 | 6.50 x 7.40 | 6.50 x 7.40 |
| A | 6.50 x 7.40 | 6.50 x 7.40 | 6.50 x 7.40 | 6.50 x 7.40 |
| B | 6.00 x 6.00 | 6.50 x 7.40 | 6.50 x 7.40 | 6.50 x 7.40 |
| C | | 6.50 x 7.40 | 6.50 x 7.40 | 6.50 x 7.40 |

| Container Carrying Capacity | Max FEU's | Add. TEU's | Max TEU's | Add. FEU's | |
|------------------------------------|-----------|------------|-----------|------------|----|
| <u>On Weather Deck and Hatches</u> | | | | | |
| Empty Positions | Standard | 100 | 0 | 152 | 24 |
| Max Stackweight | Standard | 100 | 0 | 152 | 24 |
| Max Stackweight - Self-sustained | Standard | 100 | 0 | 152 | 24 |
| Empty Positions | High Cube | 100 | 0 | 152 | 24 |
| Max Stackweight | High Cube | 100 | 0 | 152 | 24 |
| Max Stackweight - Self-sustained | High Cube | 100 | 0 | 152 | 24 |

'Max Stackweight' and 'Max Stackweight - Self-sustained' are the number of laden containers that can be loaded basis the maximum stackweight, calculating 26 mt gross for a laden FEU and 14 mt gross for a laden TEU

Above figures are as per vessel's technical layout. Actual container intake is subject to master's approval and depending on stability, stackweight and visibility.

Standard Voyage Container Carrying Capacity

Nr of High Cube (9.5') Reefers 0
of which Self-sustained 0

'Standard Voyage' = voyage from Panama Canal to Rotterdam, with a full cargo of bananas in the holds and departing with full bunker tanks. Containers on this voyage are considered to weigh 26 mt gross.

Reefer Plugs

Nr. of electrical Reefer Plugs 100



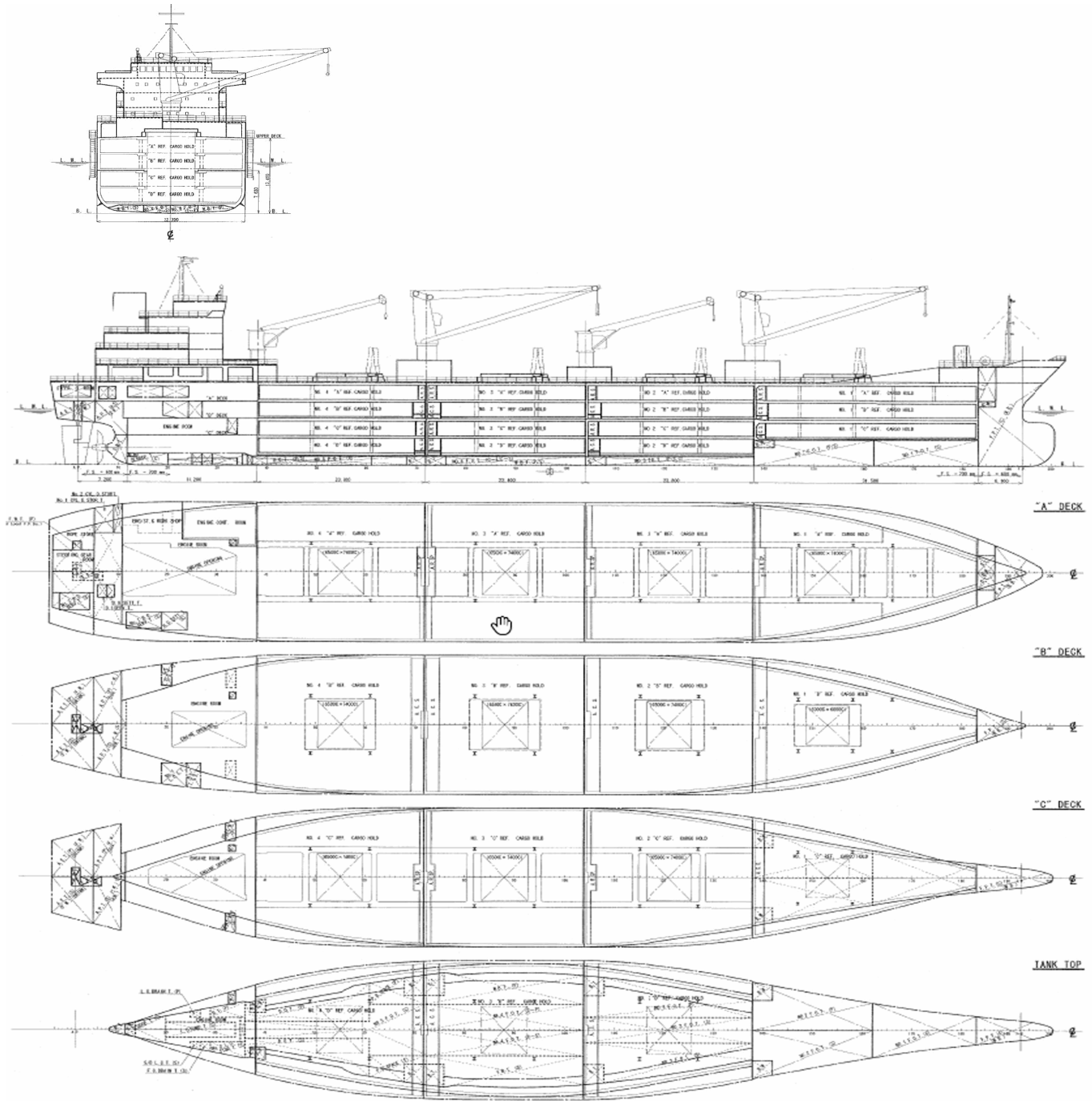
LADY ROSE

560,333 cbft / 6,062 sqm / 4,592 pallets

Cargo Gear

2 Cranes x 40.0 mt

2 Cranes x 8.0 mt



General Remarks

- Pallet Intake figures are indication only. The figures are based on a stowage factor of 1.32 pallet/sqm in reefer holds, full load of reefer containers based on the standard voyage with 20 pallets in each container

