

HUMBOLDT BAY

508,551 cbft / 5,854 sqm / 4,435 pallets



General

Built	February-1990	International	GT 9,070.00	NT 5,838.00
Flag	Liberia	Panama Canal		8,025.00
Port of Registry	Monrovia	Suez Canal		7,881.37
Callsign	A8OL4			
IMO/Lloyds nr	8907888		Draft	DWAT
Length over all [m]	148.50	Tropical	9.61	12,091
Beam [m]	20.63	Summer	9.42	11,633
Depth [m]	12.80	Winter	9.22	11,180
Bowthruster(s)	-			

Reefer

Holds	4
Hatches	4
Compartments	19
Minimum Deckheight [m]	2.20 (excl local areas)
Allowable weight of forklift including cargo	maximum 6 mt (Forklift to be equipped with minimum 4 non hard rubber airtyres)
Temperature zones	8
Cooling sections	1AB 1CD 2UPDAB 2CD 3UPDAB 3CD 4UPDAB 4CD
Temperature range [dC]	-25/+15
Air circulations [/hr]	90/45
Air renewals [/hr]	4
USDA equipped	Yes, valid until 01-June-2021
Controlled Atmosphere	None
Modified Atmosphere	No equipment on board

Classification Details

Classification Society	Lloyd'S Register (LR)
Classification	100A1
Hull Notation	refrigerated cargo ship
Machinery Notation	LMC, Lloyds RMC
Equivalent Finnish/Swedish Ice Strenghtening	-



HUMBOLDT BAY

508,551 cbft / 5,854 sqm / 4,435 pallets

Reefer Compartment Capacity Breakdown

	Hold 1		Hold 2		Hold 3		Hold 4		Total	
	Cbft	Sqm	Cbft	Sqm	Cbft	Sqm	Cbft	Sqm	Cbft	Sqm
UPD			8,835	105.78	8,421	103.44	8,294	104.63	25,550	313.85
A	33,896	340.70	35,221	431.61	37,304	455.32	35,055	439.52	141,476	1,667.15
B	22,586	210.18	32,716	378.96	36,663	434.45	34,789	410.45	126,754	1,434.04
C	13,148	144.67	31,691	375.94	38,211	457.77	33,177	382.03	116,227	1,360.41
D	11,417	132.92	26,853	288.20	36,115	407.15	24,159	250.73	98,544	1,079.00
Total	81,047	828.47	135,316	1,580.49	156,714	1,858.13	135,474	1,587.36	508,551	5,854.45

Hold 1- 4 Legend

Non insulated Deck, air passes through (aka Spar Deck)

Insulated, air tight Deck or Tanktop

Non Insulated, air tight Deck

Hatch sizes

	Hold 1	Hold 2	Hold 3	Hold 4
	l x b	l x b	l x b	l x b
Deck	10.00 x 7.50	12.60 x 8.20	12.60 x 8.20	12.60 x 8.20
UPD		10.00 x 7.50	10.00 x 7.50	10.00 x 7.50
A	10.00 x 7.60	10.00 x 7.60	10.00 x 7.60	10.00 x 7.60
B	10.00 x 5.00	10.00 x 7.50	10.00 x 7.50	10.00 x 7.50
C	7.00 x 4.50	10.00 x 7.60	10.00 x 7.60	10.00 x 7.60

Container Carrying Capacity	Max FEU's	Add. TEU's	Max TEU's	Add. FEU's
<u>On Weather Deck and Hatches</u>				
Empty Positions	Standard	0	0	0
Max Stackweight	Standard	0	0	0
Max Stackweight - Self-sustained	Standard	0	0	0
<u>Reefer Hold</u>				
Empty Positions	Standard	0	0	0
Max Stackweight	Standard	0	0	0
Max Stackweight - Self-sustained	Standard	0	0	0

'Max Stackweight' and 'Max Stackweight - Self-sustained' are the number of laden containers that can be loaded basis the maximum stackweight, calculating 26 mt gross for a laden FEU and 14 mt gross for a laden TEU

Above figures are as per vessel's technical layout. Actual container intake is subject to master's approval and depending on stability, stackweight and visibility.



HUMBOLDT BAY

508,551 cbft / 5,854 sqm / 4,435 pallets

Standard Voyage Container Carrying Capacity

Nr of High Cube (9.5') Reefers	0
of which Selfsustained	0

'Standard Voyage' = voyage from Panama Canal to Rotterdam, with a full cargo of bananas in the holds and departing with full bunker tanks. Containers on this voyage are considered to weigh 26 mt gross.

Reefer Plugs

Nr. of electrical Reefer Plugs	0
--------------------------------	---

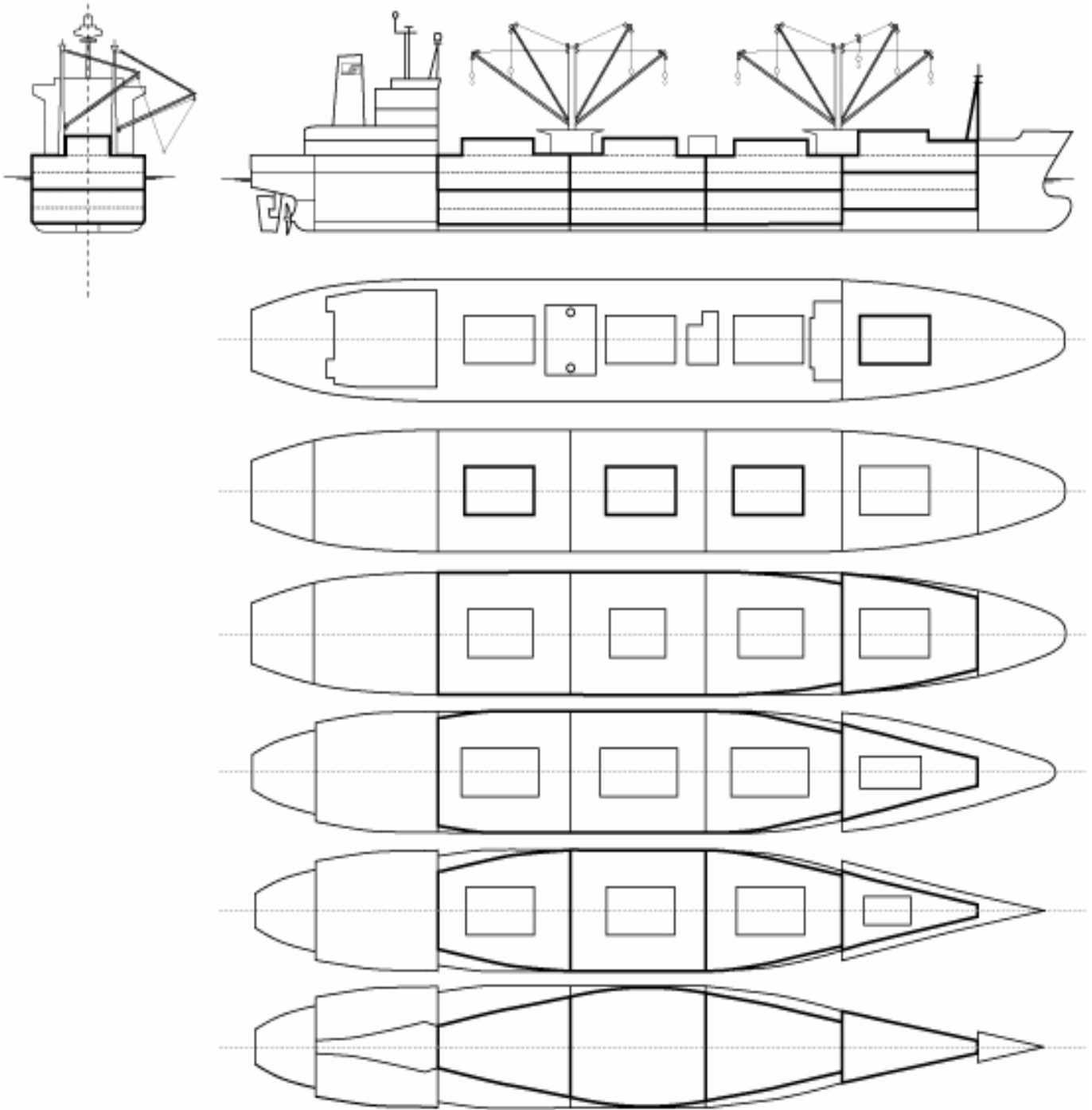
Cargo Gear

8 Derricks x 7.0 mt or 4 x 5.0 mt in Union Purchase



HUMBOLDT BAY

508,551 cbft / 5,854 sqm / 4,435 pallets



General Remarks

- Pallet Intake figures are indication only. The figures are based on a stowage factor of 1.32 pallet/sqm in reefer holds, full load of reefer containers based on the standard voyage with 20 pallets in each container

