

FUJI BAY

502,514 cbft / 5,858 sqm / 4,438 pallets



General

Built	November-1990	International	GT	NT
Flag	Liberia	Panama Canal	9,070.00	5,838.00
Port of Registry	Monrovia	Suez Canal		8,117.29
Callsign	A8OL6			7,895.87
IMO/Lloyds nr	8920141		Draft	DWAT
Length over all [m]	148.50	Tropical	9.61	12,020
Beam [m]	20.60	Summer	9.42	11,540
Depth [m]	12.80	Winter	9.22	11,180
Bowthruster(s)	-			

Reefer

Holds	4
Hatches	4
Compartments	19
Minimum Deckheight [m]	2.20 (excl local areas)
Allowable weight of forklift including cargo	maximum 6 mt (Forklift to be equipped with minimum 4 non hard rubber airtyres)
Temperature zones	8
Cooling sections	1AB 1CD 2UPDAB 2CD 3UPDAB 3CD 4UPDAB 4CD
Temperature range [dC]	-25/+15
Air circulations [/hr]	90/45/22
Air renewals [/hr]	4
USDA equipped	Yes, valid until 21-September-2021
Controlled Atmosphere	None
Modified Atmosphere	No equipment on board

Classification Details

Classification Society	Lloyd'S Register (LR)
Classification	100A1
Hull Notation	refrigerated cargo ship
Machinery Notation	LMC, Lloyds RMC
Equivalent Finnish/Swedish Ice Strenghtening	-



FUJI BAY

502,514 cbft / 5,858 sqm / 4,438 pallets

Reefer Compartment Capacity Breakdown

	Hold 1		Hold 2		Hold 3		Hold 4		Total	
	Cbft	Sqm	Cbft	Sqm	Cbft	Sqm	Cbft	Sqm	Cbft	Sqm
UPD			8,402	101.24	8,541	103.36	8,541	103.36	25,484	307.96
A	33,333	349.51	34,447	420.80	37,115	459.63	35,258	443.36	140,153	1,673.30
B	21,737	206.26	32,335	376.93	36,526	438.02	35,107	417.14	125,705	1,438.35
C	12,056	141.47	31,075	369.02	38,431	461.52	32,878	378.97	114,440	1,350.98
D	10,934	135.14	25,970	286.07	35,368	414.00	24,460	252.20	96,732	1,087.41
Total	78,060	832.38	132,229	1,554.06	155,981	1,876.53	136,244	1,595.03	502,514	5,858.00

Hold 1- 4 Legend

Non insulated Deck, air passes through (aka Spar Deck)

Insulated, air tight Deck or Tanktop

Non Insulated, air tight Deck

Hatch sizes

	Hold 1	Hold 2	Hold 3	Hold 4
	l x b	l x b	l x b	l x b
Deck	10.00 x 7.50	12.60 x 8.20	12.60 x 8.20	12.60 x 8.20
UPD		10.00 x 7.50	10.00 x 7.50	10.00 x 7.50
A	10.00 x 7.50	10.00 x 7.50	10.00 x 7.50	10.00 x 7.50
B	10.00 x 5.00	10.00 x 7.50	10.00 x 7.50	10.00 x 7.50
C	10.00 x 4.50	10.00 x 7.50	10.00 x 7.50	10.00 x 7.50

Container Carrying Capacity	Max FEU's	Add. TEU's	Max TEU's	Add. FEU's	
<u>On Weather Deck and Hatches</u>					
Empty Positions	Standard	0	0	14	0
Max Stackweight	Standard	0	0	14	0
Max Stackweight - Selfsustained	Standard	0	0	0	0
<u>Reefer Hold</u>					
Empty Positions	Standard	0	0	0	0
Max Stackweight	Standard	0	0	0	0
Max Stackweight - Selfsustained	Standard	0	0	0	0

'Max Stackweight' and 'Max Stackweight - Selfsustained' are the number of laden containers that can be loaded basis the maximum stackweight, calculating 26 mt gross for a laden FEU and 14 mt gross for a laden TEU

Above figures are as per vessel's technical layout. Actual container intake is subject to master's approval and depending on stability, stackweight and visibility.



FUJI BAY

502,514 cbft / 5,858 sqm / 4,438 pallets

Standard Voyage Container Carrying Capacity

Nr of High Cube (9.5') Reefers	0
of which Selfsustained	0

'Standard Voyage' = voyage from Panama Canal to Rotterdam, with a full cargo of bananas in the holds and departing with full bunker tanks. Containers on this voyage are considered to weigh 26 mt gross.

Reefer Plugs

Nr. of electrical Reefer Plugs	14
--------------------------------	----

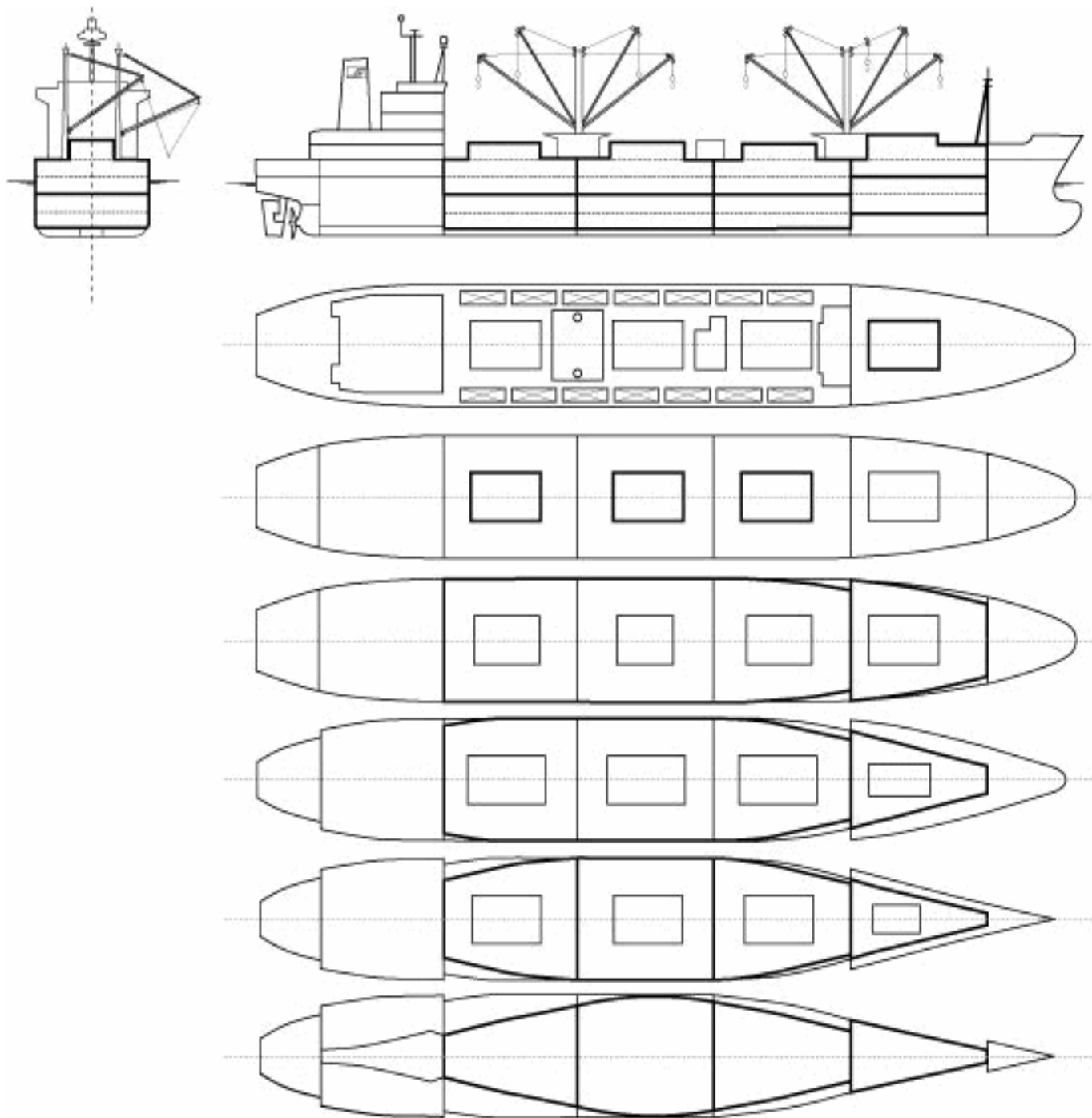
Cargo Gear

8 Derricks x 7.0 mt or 4 x 5.0 mt in Union Purchase



FUJI BAY

502,514 cbft / 5,858 sqm / 4,438 pallets



General Remarks

- Pallet Intake figures are indication only. The figures are based on a stowage factor of 1.32 pallet/sqm in reefer holds, full load of reefer containers based on the standard voyage with 20 pallets in each container

