

DUNCAN ISLAND

622,844 cbft / 7,317 sqm / 14,140 mt DWAT



General

Built	December-1993	International	GT 14,061.00	NT 6,900.00
Flag	Bahamas	Panama Canal		11,503.00
Port of Registry	Nassau	Suez Canal		0.00
Callsign	C6JS			
IMO/Lloyds nr	9059638		Draft	DWAT
Length over all [m]	179.90	Tropical	0.00	0
Beam [m]	25.20	Summer	9.22	14,140
Depth [m]	15.70	Winter	0.00	0
Bowthruster(s)	-			

Reefer

Holds	4
Hatches	4
Compartments	15
Minimum Deckheight [m]	2.29 (excl local areas)
Allowable weight of forklift including cargo	maximum 7 mt (Forklift to be equipped with minimum 4 non hard rubber airtyres)
Temperature zones	8
Cooling sections	1A 1BC 2AB 2CD 3AB 3CD 4AB 4CD
Temperature range [dC]	-29/+13
Air circulations [/hr]	90
Air renewals [/hr]	0
USDA equipped	Yes, valid until 04-November-2022
Controlled Atmosphere	None
Modified Atmosphere	No equipment on board

Classification Details

Classification Society	Lloyd'S Register (LR)
Classification	+100A1
Hull Notation	certified container securing arrangements
Machinery Notation	+LMC, UMS, +Lloyds RMC



DUNCAN ISLAND

622,844 cbft / 7,317 sqm / 14,140 mt DWAT

Reefer Compartment Capacity Breakdown

	Hold 1		Hold 2		Hold 3		Hold 4		Total	
	Cbft	Sqm	Cbft	Sqm	Cbft	Sqm	Cbft	Sqm	Cbft	Sqm
A	53,042	578.00	53,431	594.00	50,182	559.00	50,358	557.00	207,013	2,288.00
B	33,902	395.00	44,814	548.00	46,333	563.00	46,404	560.00	171,453	2,066.00
C	21,507	263.00	39,305	478.00	46,651	564.00	43,472	528.00	150,935	1,833.00
D			29,982	355.00	35,986	438.00	27,475	337.00	93,443	1,130.00
Total	108,451	1,236.00	167,532	1,975.00	179,152	2,124.00	167,709	1,982.00	622,844	7,317.00

Hold 1- 4 Legend

Non insulated Deck, air passes through (aka Spar Deck)

Insulated, air tight Deck or Tanktop

Non Insulated, air tight Deck

Hatch sizes

	Hold 1	Hold 2	Hold 3	Hold 4
	l x b	l x b	l x b	l x b
Deck	13.70 x 10.70	13.70 x 10.70	13.70 x 10.70	13.70 x 10.70
A		-		
B		-		
C		-		

Container Carrying Capacity	Max FEU's	Add. TEU's	Max TEU's	Add. FEU's	
On Weather Deck and Hatches					
Empty Positions	Standard	157	10	324	0
Max Stackweight	Standard	157	10	324	0
Max Stackweight - Selfsustained	Standard	157	10	324	0
Empty Positions	High Cube	157	10	324	0
Max Stackweight	High Cube	157	10	324	0
Max Stackweight - Selfsustained	High Cube	157	10	324	0
Reefer Hold					
Empty Positions	Standard	56	0	112	0
Max Stackweight	Standard	56	0	112	0
Max Stackweight - Selfsustained	Standard	56	0	112	0
Empty Positions	High Cube	40	0	80	0
Max Stackweight	High Cube	40	0	80	0
Max Stackweight - Selfsustained	High Cube	40	0	80	0

'Max Stackweight' and 'Max Stackweight - Selfsustained' are the number of laden containers that can be loaded basis the maximum stackweight, calculating 26 mt gross for a laden FEU and 14 mt gross for a laden TEU

Above figures are as per vessel's technical layout. Actual container intake is subject to master's approval and depending on stability, stackweight and visibility.



DUNCAN ISLAND

622,844 cbft / 7,317 sqm / 14,140 mt DWAT

Standard Voyage Container Carrying Capacity

Nr of High Cube (9.5') Reefers	0
of which Selfsustained	0

'Standard Voyage' = voyage from Panama Canal to Rotterdam, with a full cargo of bananas in the holds and departing with full bunker tanks. Containers on this voyage are considered to weigh 26 mt gross.

Reefer Plugs

Nr. of electrical Reefer Plugs	162
--------------------------------	-----

Cargo Gear

3 Cranes x 40.0 mt

4 Cranes x 10.0 mt



DUNCAN ISLAND

622,844 cbft / 7,317 sqm / 14,140 mt DWAT

Speed & Consumption

Ballast				Draft condition	Forward: 6.50	Aft: 6.50
<u>Speed</u>	<u>ME HFO</u>	<u>ME MGO</u>	<u>Slow Steaming</u>			
17.00	28.00	0.00	No			
21.00	48.00	0.00	No			
Ave. aux. cons. excl. reefer containers						
	<u>A/E's</u>	<u>Boiler</u>				
HFO	4.00	0.00				
MGO	0.00	0.00				
Banana Laden				Draft condition	Forward: 6.50 - 8.50	Aft: 6.50 - 8.50
<u>Speed</u>	<u>ME HFO</u>	<u>ME MGO</u>	<u>Slow Steaming</u>			
17.00	33.50	0.00	No			
21.00	51.20	0.00	No			
Ave. aux. cons. excl. reefer containers						
	<u>A/E's</u>	<u>Boiler</u>				
HFO	9.00	0.00				
MGO	0.00	0.00				
Banana Laden + Containers				Draft condition	Forward: 8.50 - 10.00	Aft: 8.50 - 10.00
<u>Speed</u>	<u>ME HFO</u>	<u>ME MGO</u>	<u>Slow Steaming</u>			
17.00	38.50	0.00	No			
20.00	51.70	0.00	No			
Ave. aux. cons. excl. reefer containers						
	<u>A/E's</u>	<u>Boiler</u>				
HFO	9.00	0.00				
MGO	0.00	0.00				
General Cargo				Draft condition	Forward: 6.50 - 8.50	Aft: 6.50 - 8.50
<u>Speed</u>	<u>ME HFO</u>	<u>ME MGO</u>	<u>Slow Steaming</u>			
17.00	33.50	0.00	No			
21.00	51.20	0.00	No			
Ave. aux. cons. excl. reefer containers						
	<u>A/E's</u>	<u>Boiler</u>				
HFO	4.00	0.00				
MGO	0.00	0.00				
In Port						
	Ave. aux. cons. excl. cargo			Reefer Plant		
	<u>A/E's</u>	<u>Boiler</u>		<u>A/E's</u>		
HFO	8.00	1.50	+	0.00		
MGO	0.00	0.00		0.00		



DUNCAN ISLAND

622,844 cbft / 7,317 sqm / 14,140 mt DWAT

- All speeds are 'about', all consumptions are 'about', basis clean hull, clean propeller and deep (minimum 7 x deepest draft), currentless water/sea with a temperature of maximum 28 degree Celcius.
- Descriptions are given basis maximum Beaufort 4, maximum 2 meters combined swell and wave height.
- Additional MGO may be used for starting/stopping engines and/or manouvring and/or in narrow and/or restricted waters and/or in extreme weather conditions.
- All auxiliary consumptions are based on maintaining cargo temperatures, during reduction period higher consumptions may be recorded.
- All descriptions exclude consumption for carried laden reefer containers. Depending on ao the make and/or type of container, maintenance state of the container, commodity in the container, ambient temperature, use of water cooling, stowage position: as indication an average additional fuel consumption of about 30 kg/container/24hrs when maintaining temperatures to be taken into account.
- Port consumptions are averages for vessel lying alongside berth. Manoeuvring consumptions are excluded.
- Auxiliary consumption up to 29 mt/day with all generators fully loaded.
- All Speeds are in knots and all consumptions are in metric tons per 24 hours.
- International and/or local regulations, such as but not limited to ECA's, may require use of other fuel grades than specified.
- Conditions are based on sailing with even keel, unless stated otherwise. Significant trim, especially large negative trim, may have negative impact on the performance.
- All consumption figures are based on ISO 8217 (latest revision) specification fuels with following minimum caloric values:
HFO: 40.600 kJ/kg
MGO 42.700 kJ/kg

Bunker Tank Capacities

	<u>Cbm (100%)</u>	<u>Cbm at max filling level*</u>	<u>mt**</u>
Overflow/Settling/Daytanks for RMG380 (IFO380)	36	32	32
ULS	53	48	48
VLS	1,694	1,525	1,511
Total bunker capacity for RMG380 (IFO380)	1,783	1,605	1,590
ULS	546	491	422
Total bunker capacity for DMA (MGO)	546	491	422

*) Vessel shall not mix bunkers from different bunkerings in 1 bunker tank. This may reduce the actual bunker capacity.

**) Capacity in mt serve as indication only. Actual capacity in mt depending ao on the specifice gravity and temperature of the supplied bunkers.

Vessel to be solely supplied with fuels as per ISO 8217:2010 or any subsequent amendment thereof. All supplied fuels shall be suitable to enable main propulsion and auxiliary machinery to operate efficiently and without harmful effects and in line with any national and/or international requirements. Fuels to be mineral based products and shall not contain waste lubricants (ULO), chemicals or any other harmful substances and shall be of homogenous and stable nature. Charterers to buy and arrange bunkers only from qualified suppliers and/or from majors and carry out their own quality checks as deemed necessary for their control.

Charterers warrant that whenever bunkers are ordered for the vessel, the order not to put a lien on the vessel and explicitly request "The Products shall not include waste chemicals, waste lubricants and/or other non-fuel components."

BIMCO Bunker Fuel Sulphur Content clause for Time Charter parties 2004 to apply.

If vessel is redelivered in an ECA area, Charterers warrant that vessel will be redelivered with sufficient bunkers suitable for consumption as per the requirements of the relevant ECA area to reach a port or place where suitable bunkers may be supplied.

Vessel participates in fuel testing program. Samples are taken during each fuel from each supplied grade. Costs involved to be equally shared between Owners and Charterers. Vessel shall not consume any supplied fuel without having received full fuel analysis report confirming the fuel's quality.

It is Charterers obligation to make sure that fuels with sulphur content higher than 0.5% are either consumed or removed from the vessel at his cost prior 01 January 2020.

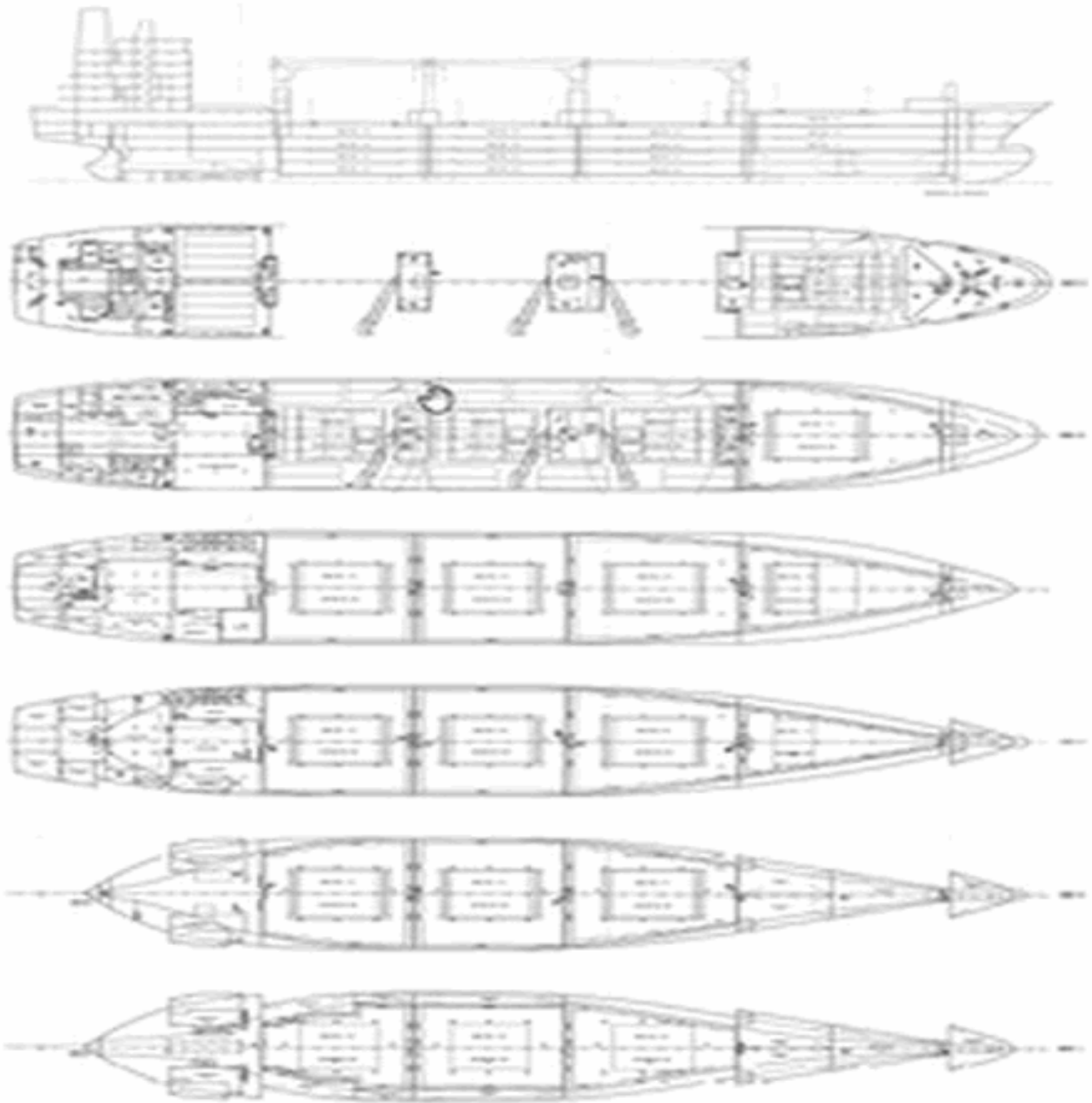


DUNCAN ISLAND

622,844 cbft / 7,317 sqm / 14,140 mt DWAT

Communication Details

Communication type	System	Communication number / Comments
Mail	E-Mail	duncan@duncan.trireme.commbox.com
Phone	Iridium	+881 677 779 592
Phone	Vsat	+32 784 806 90
Telex	Satcom-C	+580 430 870 411
Telex	Satcom-C	+580 430 870 410



General Remarks



DUNCAN ISLAND

622,844 cbft / 7,317 sqm / 14,140 mt DWAT

- Pallet Intake figures are indication only. The figures are based on a stowage factor of 1.32 pallet/sqm in reefer holds, full load of reefer containers based on the standard voyage with 20 pallets in each container

