

ATLANTIC KLIPPER

661,530 cbft / 7,118 sqm / 9,232 pallets



General

Built	January-2011	International	GT	NT
Flag	Dutch	Panama Canal	14,091.00	7,603.00
Port of Registry	Scheveningen	Suez Canal		11,824.00
Callsign	PCIU			12,766.65
IMO/Lloyds nr	9454761		Draft	DWAT
Length over all [m]	165.00	Tropical	10.53	16,413
Beam [m]	25.00	Summer	10.32	15,693
Depth [m]	14.00	Winter	10.10	14,979
Bowthruster(s)	1 x 1,000kW			

Reefer

Holds	4
Hatches	4
Compartments	16
Minimum Deckheight [m]	2.30 (excl local areas)
Allowable weight of forklift including cargo	maximum 9 mt (Forklift to be equipped with minimum 4 non hard rubber airtyres)
Temperature zones	8
Cooling sections	1FCA 1BC 2AB 2CD 3AB 3CD 4AB 4CD
Temperature range [dC]	-25/+15
Air circulations [/hr]	90/60/45
Air renewals [/hr]	3
USDA equipped	Yes, valid until 01-December-2020
Controlled Atmosphere	CA pre-piped
Modified Atmosphere	No equipment on board



ATLANTIC KLIPPER

661,530 cbft / 7,118 sqm / 9,232 pallets

Classification Details

Classification Society	Bureau Veritas (BV)
Main Class symbols	I, +Hull, +Mach
Service Notations	Container ship, Refrigerated cargo ship, Equipped for the carriage of vehicles
Navigation Notations	Unrestricted navigation
Additional Class Notations	+AUT-UMS, MON-SHAFT, +REF-CARGO-AIRCONT, REF-CONT(E), ICE CLASS IB, INWATERSURVEY
Machinery	+MACH
Equivalent Finnish/Swedish	
Ice Strengthening	IB

Reefer Compartment Capacity Breakdown

	Hold 1		Hold 2		Hold 3		Hold 4		Total	
	Cbft	Sqm	Cbft	Sqm	Cbft	Sqm	Cbft	Sqm	Cbft	Sqm
FC	55,656	573.90							55,656	573.90
A	33,217	346.80	52,410	535.30	52,659	543.90	48,111	486.50	186,397	1,912.50
B	26,365	284.60	46,162	513.20	48,194	546.70	43,397	484.70	164,118	1,829.20
C	22,541	237.50	41,606	464.30	47,038	541.30	40,114	440.90	151,299	1,684.00
D			35,636	371.90	34,397	403.30	34,027	343.40	104,060	1,118.60
Total	137,779	1,442.80	175,814	1,884.70	182,288	2,035.20	165,649	1,755.50	661,530	7,118.20

Hold 1- 4 Legend

Non insulated Deck, air passes through (aka Spar Deck)

Insulated, air tight Deck or Tanktop

Non Insulated, air tight Deck

Hatch sizes

	Hold 1	Hold 2	Hold 3	Hold 4
	l x b	l x b	l x b	l x b
Deck	7.00 x 10.50	12.60 x 10.50	12.60 x 10.50	12.60 x 10.50
FC	7.00 x 10.50	-		
A	7.00 x 10.50	12.60 x 10.50	12.60 x 10.50	12.60 x 10.50
B	7.00 x 8.00	12.60 x 10.50	12.60 x 10.50	12.60 x 10.50
C		12.60 x 10.50	12.60 x 10.50	12.60 x 10.50



ATLANTIC KLIPPER

661,530 cbft / 7,118 sqm / 9,232 pallets

Container Carrying Capacity		Max FEU's	Add. TEU's	Max TEU's	Add. FEU's
<u>On Weather Deck and Hatches</u>					
Empty Positions	Standard	267	9	552	0
Max Stackweight	Standard	247	9	503	0
Max Stackweight - Self-sustained	Standard	242	9	434	0
Empty Positions	High Cube	249	9	507	0
Max Stackweight	High Cube	247	9	503	0
Max Stackweight - Self-sustained	High Cube	242	9	434	0
<u>Reefer Hold</u>					
Empty Positions	Standard	48	12	108	0
Max Stackweight	Standard	48	12	108	0
Max Stackweight - Self-sustained	Standard	48	12	108	0
Empty Positions	High Cube	48	12	108	0
Max Stackweight	High Cube	48	12	108	0
Max Stackweight - Self-sustained	High Cube	48	12	108	0

'Max Stackweight' and 'Max Stackweight - Self-sustained' are the number of laden containers that can be loaded basis the maximum stackweight, calculating 26 mt gross for a laden FEU and 14 mt gross for a laden TEU
Above figures are as per vessel's technical layout. Actual container intake is subject to master's approval and depending on stability, stackweight and visibility.

Standard Voyage Container Carrying Capacity

Nr of High Cube (9.5') Reefers 192
of which Self-sustained 192

'Standard Voyage' = voyage from Panama Canal to Rotterdam, with a full cargo of bananas in the holds and departing with full bunker tanks. Containers on this voyage are considered to weigh 26 mt gross.

Reefer Plugs

Nr. of electrical Reefer Plugs 200

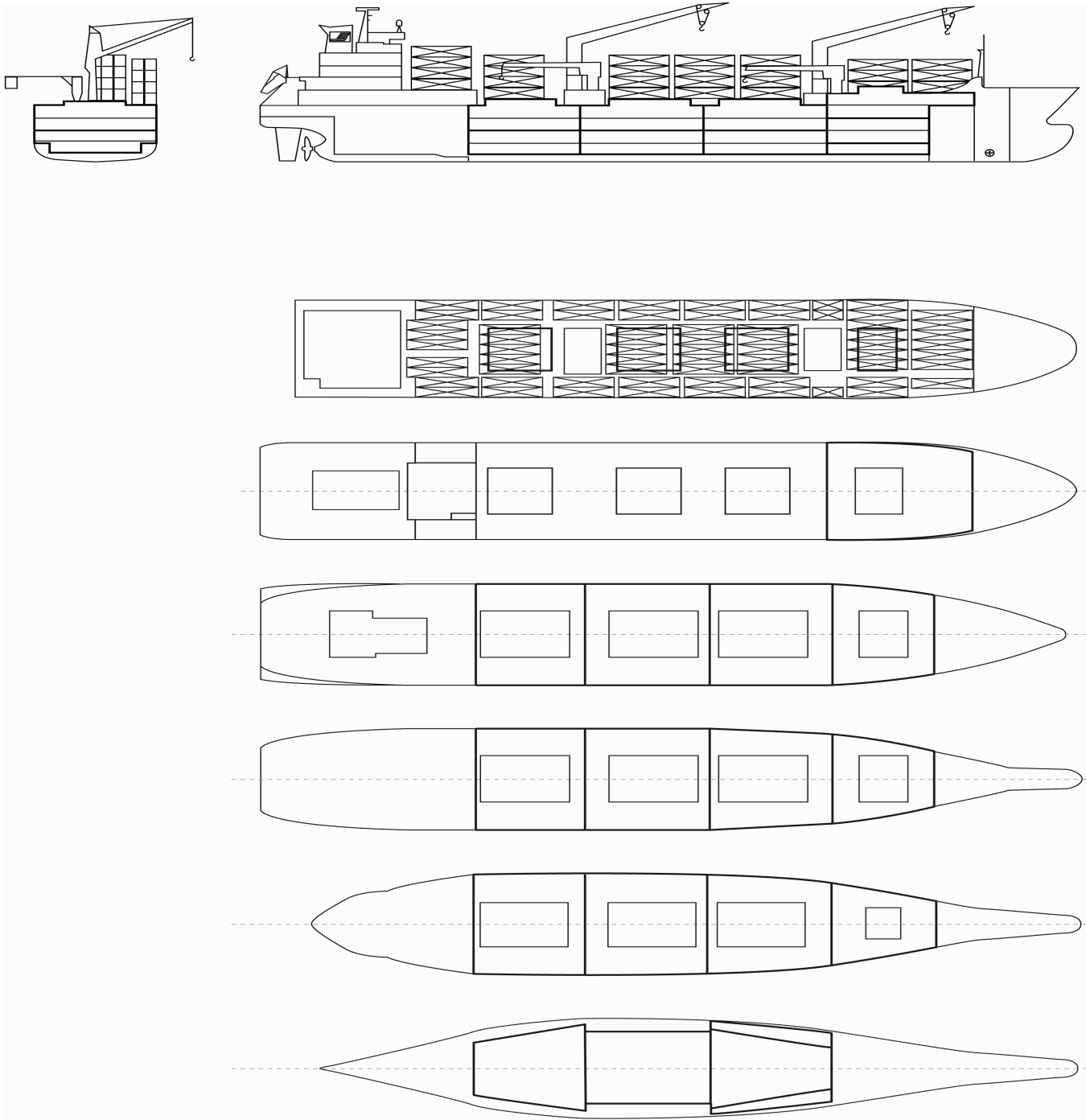
Cargo Gear

2 Cranes x 40.0 mt
2 Cranes x 8.0 mt



ATLANTIC KLIPPER

661,530 cbft / 7,118 sqm / 9,232 pallets



General Remarks

- Pallet Intake figures are indication only. The figures are based on a stowage factor of 1.32 pallet/sqm in reefer holds, full load of reefer containers based on the standard voyage with 20 pallets in each container

