

# ACONCAGUA BAY

512,361 cbft / 5,894 sqm / 4,845 pallets



## General

Built	April-1992	International	<b>GT</b>	<b>NT</b>
Flag	Liberia	Panama Canal	9,074.00	5,844.00
Port of Registry	Monrovia	Suez Canal		8,095.00
Callsign	A8KY9			7,888.83
IMO/Lloyds nr	9019652		<b>Draft</b>	<b>DWAT</b>
Length over all [m]	148.50	Tropical	9.61	12,039
Beam [m]	20.60	Summer	9.42	11,581
Depth [m]	12.80	Winter	9.22	11,128
Bowthruster(s)	-			

## Reefer

Holds	4
Hatches	4
Compartments	19
Minimum Deckheight [m]	2.20 (excl local areas)
Allowable weight of forklift including cargo	maximum 6 mt (Forklift to be equipped with minimum 4 non hard rubber airtyres)
Temperature zones	8
Cooling sections	1AB   1CD   2UPDAB   2CD   3UPDAB   3CD   4UPDAB   4CD
Temperature range [dC]	-25/+15
Air circulations [/hr]	90
Air renewals [/hr]	0
USDA equipped	Yes, valid until 01-November-2020
Controlled Atmosphere	None
Modified Atmosphere	No equipment on board



# ACONCAGUA BAY

512,361 cbft / 5,894 sqm / 4,845 pallets

## Classification Details

Classification Society	Bureau Veritas (BV)
Main Class symbols	I, +Hull, +MACH
Service Notations	Refrigerated cargo ship
Navigation Notations	Unrestricted Navigation
Additional Class Notations	+REF-CARGO
Machinery	+MACH
Equivalent Finnish/Swedish	
Ice Strengthening	-

## Reefer Compartment Capacity Breakdown

	Hold 1		Hold 2		Hold 3		Hold 4		Total	
	Cbft	Sqm	Cbft	Sqm	Cbft	Sqm	Cbft	Sqm	Cbft	Sqm
UPD			8,815	108.68	8,833	103.40	8,739	103.30	26,387	315.38
A	34,096	363.82	36,070	428.60	37,515	458.29	36,205	441.98	143,886	1,692.69
B	22,703	210.75	33,005	378.17	37,100	437.24	36,090	412.20	128,898	1,438.36
C	12,401	145.35	30,961	367.59	38,387	461.17	32,513	380.99	114,262	1,355.10
D	11,750	141.50	25,941	284.60	35,763	411.94	25,474	254.81	98,928	1,092.85
<b>Total</b>	<b>80,950</b>	<b>861.42</b>	<b>134,792</b>	<b>1,567.64</b>	<b>157,598</b>	<b>1,872.04</b>	<b>139,021</b>	<b>1,593.28</b>	<b>512,361</b>	<b>5,894.38</b>

Hold 1- 4 Legend

Non insulated Deck, air passes through (aka Spar Deck)

Insulated, air tight Deck or Tanktop

Non Insulated, air tight Deck

## Hatch sizes

	Hold 1	Hold 2	Hold 3	Hold 4
	l x b	l x b	l x b	l x b
Deck	10.00 x 7.50	12.60 x 8.20	12.60 x 8.20	12.60 x 8.20
UPD		10.00 x 7.50	10.00 x 7.50	10.00 x 7.50
A	10.00 x 7.50	10.00 x 7.50	10.00 x 7.50	10.00 x 7.50
B	10.00 x 7.50	10.00 x 7.50	10.00 x 7.50	10.00 x 7.50
C	7.00 x 4.50	10.00 x 7.50	10.00 x 7.50	10.00 x 7.50



# ACONCAGUA BAY

512,361 cbft / 5,894 sqm / 4,845 pallets

Container Carrying Capacity		Max FEU's	Add. TEU's	Max TEU's	Add. FEU's
<u>On Weather Deck and Hatches</u>					
Empty Positions	Standard	19	0	20	0
Max Stackweight	Standard	19	0	20	0
Max Stackweight - Self-sustained	Standard	0	0	0	0
Empty Positions	High Cube	19	0	20	0
Max Stackweight	High Cube	19	0	20	0
<u>Reefer Hold</u>					
Empty Positions	Standard	0	0	0	0
Max Stackweight	Standard	0	0	0	0
Max Stackweight - Self-sustained	Standard	0	0	0	0
Empty Positions	High Cube	0	0	0	0

'Max Stackweight' and 'Max Stackweight - Self-sustained' are the number of laden containers that can be loaded basis the maximum stackweight, calculating 26 mt gross for a laden FEU and 14 mt gross for a laden TEU

Above figures are as per vessel's technical layout. Actual container intake is subject to master's approval and depending on stability, stackweight and visibility.

## Standard Voyage Container Carrying Capacity

Nr of High Cube (9.5') Reefers            19  
of which Self-sustained                    0

'Standard Voyage' = voyage from Panama Canal to Rotterdam, with a full cargo of bananas in the holds and departing with full bunker tanks. Containers on this voyage are considered to weigh 26 mt gross.

## Reefer Plugs

Nr. of electrical Reefer Plugs            19

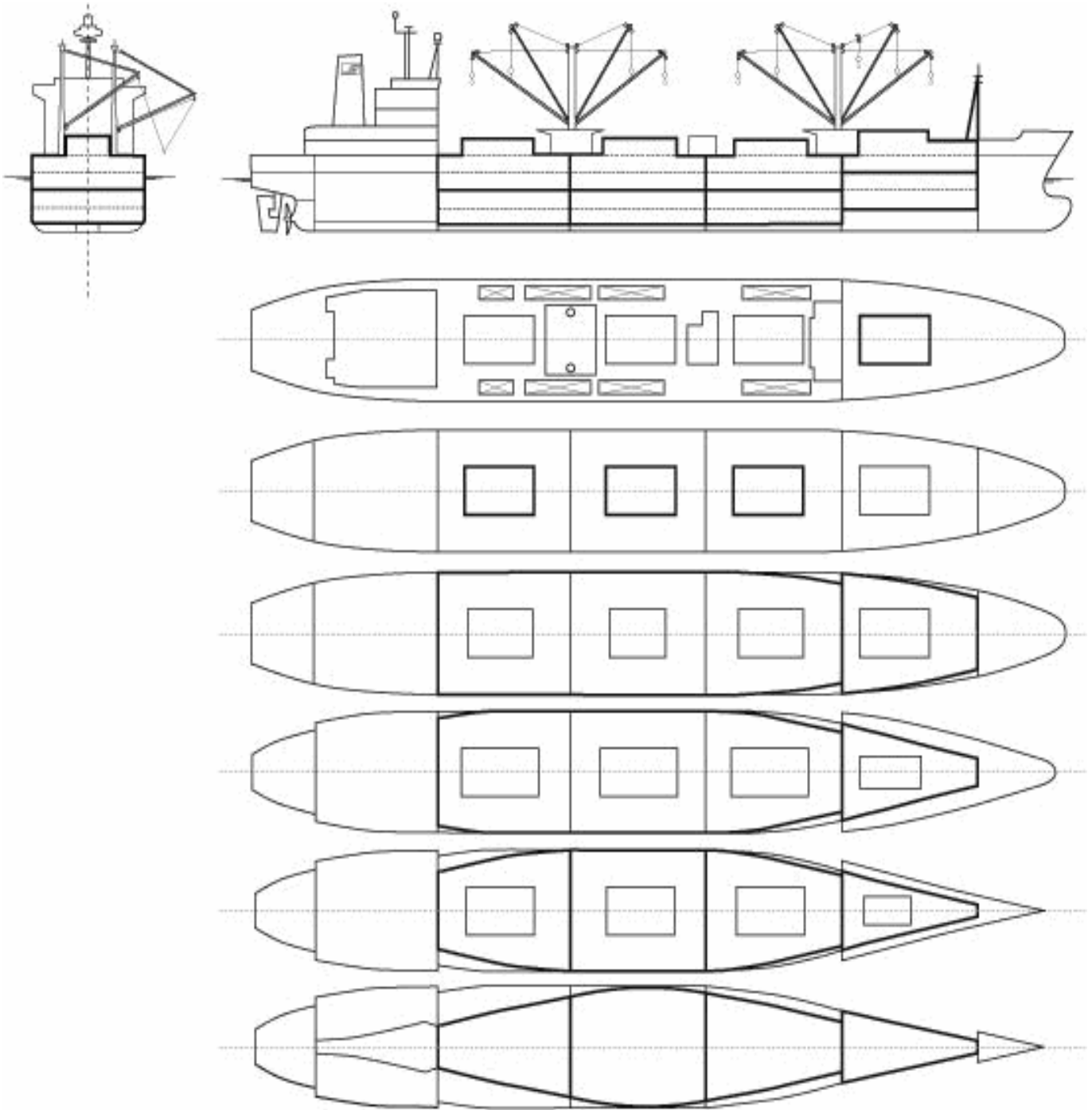
## Cargo Gear

8 Derricks x 7.0 mt or 4 x 5.0 mt in Union Purchase



# ACONCAGUA BAY

512,361 cbft / 5,894 sqm / 4,845 pallets



## General Remarks

- Pallet Intake figures are indication only. The figures are based on a stowage factor of 1.32 pallet/sqm in reefer holds, full load of reefer containers based on the standard voyage with 20 pallets in each container

