

# SEATRADE PANAMA

Slot capacity: 1,781 TEU



## General

Built	August-2025	International	<b>GT</b> 18,500.00	<b>NT</b> 8,276.00
Flag	Liberia	Panama Canal		0.00
Port of Registry	Monrovia	Suez Canal		0.00
Callsign	5LXD3			
IMO/Lloyds nr	1032426		<b>Draft</b>	<b>DWAT</b>
Length over all [m]	171.99			
Beam [m]	28.40	Summer	9.85	24,411
Depth [m]	14.50			
Bowthruster(s)	1 x 1,000kW	Design	8.50	19,500

## Classification Details

Classification Society	Bureau Veritas (BV)
Main Class symbols	I, +Hull, +Mach
Service Notations	Container Ship
Navigation Notations	Unrestricted Navigation
Additional Class Notations	+AUT-UMS, GREEN PASSPORT(EU), CLEANSHIP, SEEMP, INWATERSURVEY, BWT, CPS(WBT), LASHING-WW, LI-HG-S2, MON-SHAFT, TIER-III, COMF-NOISE3, METHANOL FUEL READY(S)
Machinery	+MACH
Class' Ice Notation	
Equivalent Finnish/Swedish Ice Strengthening	-

## Cargo Gear

2 Cranes x 40.0 mt



# SEATRADE PANAMA

Slot capacity: 1,781 TEU

## Container slot flexibility

	<u>Holds</u>	<u>Deck &amp; Hatches</u>	<u>Total</u>
	0 (0)	0 (0)	0 (0)
20'x8'6"(+40'x8'6")	654 (0)	845 (141)	1,499 (141)
40'x8'6"(+20'x8'6")	312 (30)	554 (8)	866 (38)

198 x 45' on deck

Homogeneous intake of TEU's of 14mt: 1,330

Actual intake and distribution always subject to ao vessel's stability, trim, bending moments, sheer forces, deadweight, permissible weights, permissible lashing gear break loads, container lashing and stowage plans, ranges of visibility, IMDG stowage/segregation requirements, Panama / Suez Canal Regulations and/or Cargo Securing Manual.

## Remarks

Cargo holds are prepared for loading up to the 4th tier 9'6" reefer containers including access for maintenance.

## Under stowage

Check container plan for the details.

## Reefer Plugs

Deck: 411  
Holds: 230  
Total: 641

## Cooling Water Plugs

-

## Remote Reefer Monitoring System

Type: PCT  
Maker: Refcon  
Version: 6  
RDC handheld available: Yes

## Fittings

Fully cellularized for 40' containers in holds. 2 x 20' units can be loaded in one 40' cell.

Designated bays for 20' units.

Fitted with loosed lashings for 20'/40' units (OSHA).

Type of twistlocks: Full-automatic.

Cargo holds are prepared for loading up to the 4th tier 9'6" reefer containers including access for maintenance.

## Permissible Stackloads

Deck: -- / 120 mt per 20' / 40' stack  
Hatches: 80 / 110 mt per 20' / 40' stack  
Except hatch1: 70 / 90 mt per 20' / 40' stack  
Holds: 152.5 / 152.5 mt per 20' / 40' stack



# SEATRADE PANAMA

Slot capacity: 1,781 TEU

## Hatch sizes

<u>Hold</u>	<u>Hatches # / Type</u>	<u>Position</u>	<u>length x width</u>	<u>Panels #</u>	<u>Position</u>	<u>length x width</u>	<u>Panels #</u>
1	2	Pontoon	Fwd	12.60 x 15.35/10.10	2		
			Aft	12.60 x 20.33	2		
2	2	Pontoon	Fwd	12.60 x 25.10	2		
			Aft	12.60 x 25.10	2		
3	2	Pontoon	Fwd	12.60 x 25.10	2		
			Aft	12.60 x 25.10	2		
4	2	Pontoon	Fwd	12.60 x 25.10	2		
			Aft	12.60 x 25.10	2		

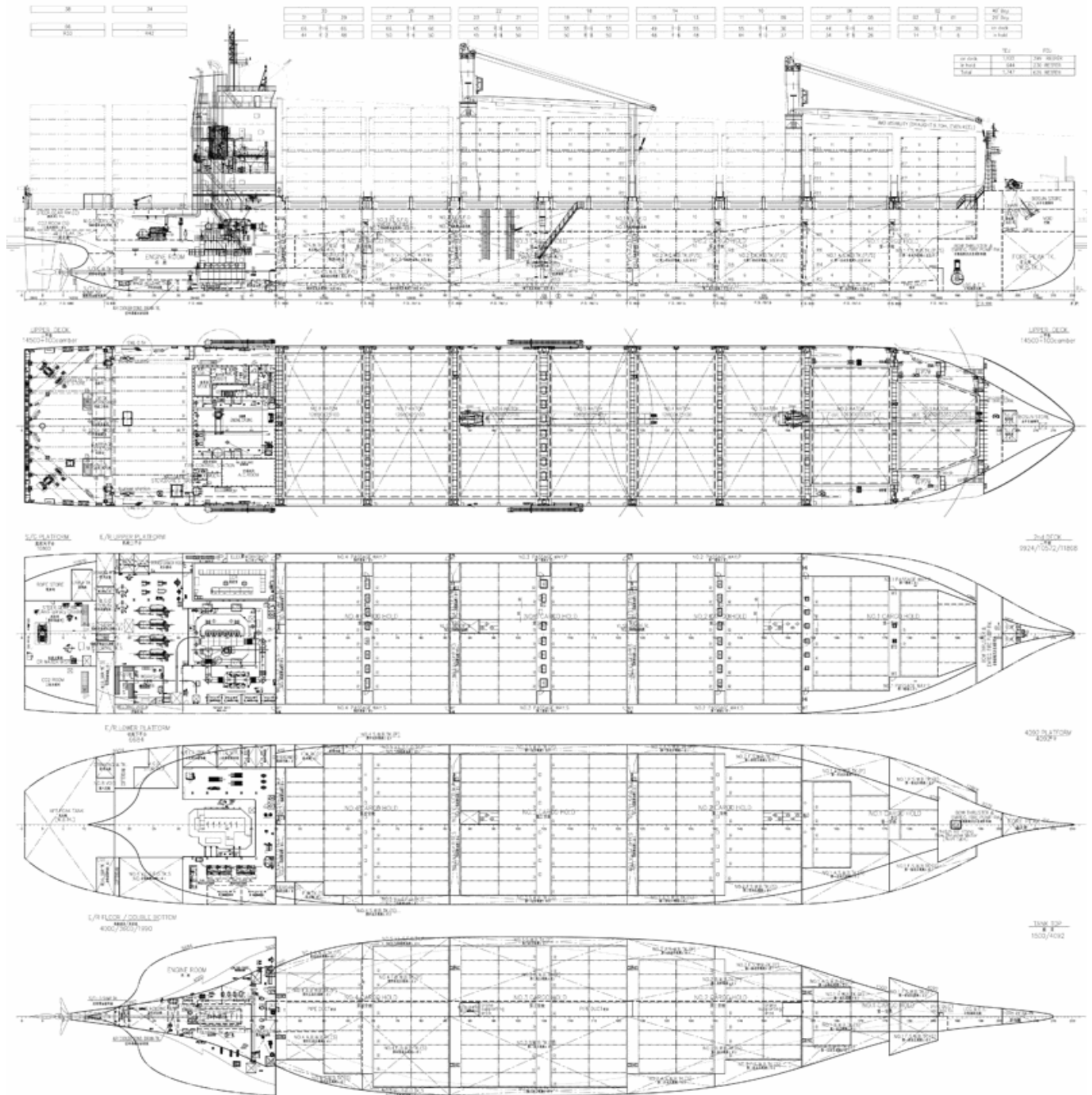
Pontoon type hatch covers are weather tight, open/closed with non-sequential operating, and divided into 2 longitudinal sections.

Maximum panel weight including fixed fittings, bottom twist-locks and turnbuckles is 40 mt.



# SEATRADE PANAMA

Slot capacity: 1,781 TEU



## General Remarks

- Nominal Container Intake is based on maximum available empty standard (8'6") container slots whereby IMO visibility rules are respected.
- Effective Container Intake is based on the Nominal Container Intake but then for laden containers with the indicated weight whereby max stackweights are respected.
- Homogeneous TEU Intake at 14 mt is a theoretical figure based on standard (8'6") 20 ft containers of 14 mt, homogeneously loaded with the vertical center of gravity at 45% of the container height. The requirements for minimum stability and maximum draft are hereby respected.

