

SEATRADE ECUADOR

Slot capacity: 1,781 TEU



General

| | | | | |
|---------------------|---------------|---------------|------------------------|-----------------------|
| Built | November-2024 | International | GT 18,761.00 | NT 8,018.00 |
| Flag | Liberia | Panama Canal | | 0.00 |
| Port of Registry | Monrovia | Suez Canal | | 0.00 |
| Callsign | 5LSP2 | | | |
| IMO/Lloyds nr | 9976226 | | Draft | DWAT |
| Length over all [m] | 171.99 | Tropical | 0.00 | 0 |
| Beam [m] | 28.40 | Summer | 9.70 | 23,900 |
| Depth [m] | 14.50 | Winter | 0.00 | 0 |
| Bowthruster(s) | 1 x 1,000kW | Design | 8.50 | 18,800 |

Classification Details

| | |
|--|---|
| Classification Society | Bureau Veritas (BV) |
| Main Class symbols | I, +Hull, +Mach |
| Service Notations | Container Ship |
| Navigation Notations | Unrestricted Navigation |
| Additional Class Notations | +AUT-UMS(SS), GREEN PASSPORT(EU), CLEANSHIP, SEEMP, INWATERSURVEY, CPS(WBT), LASHING-WW, LI-HG-S2, MON-SHAFT, TIER-III, COMF-NOISE3, METHANOL READY |
| Machinery | +MACH |
| Class' Ice Notation | |
| Equivalent Finnish/Swedish Ice Strengthening | - |

Cargo Gear

2 Cranes x 45.0 mt



SEATRADE ECUADOR

Slot capacity: 1,781 TEU

Container slot flexibility

| | <u>Holds</u> | <u>Deck & Hatches</u> | <u>Total</u> |
|---------------------|--------------|---------------------------|--------------|
| 20'x8'6"(+40'x8'6") | 654 (0) | 845 (141) | 1,499 (141) |
| 40'x8'6"(+20'x8'6") | 312 (30) | 554 (8) | 866 (38) |

198 x 45' on deck

Homogeneous intake of TEU's of 14mt: 1,330

Actual intake and distribution always subject to a vessel's stability, trim, bending moments, sheer forces, deadweight, permissible weights, permissible lashing gear break loads, container lashing and stowage plans, ranges of visibility, IMDG stowage/segregation requirements, Panama / Suez Canal Regulations and/or Cargo Securing Manual.

Under stowage

Check container plan for the details.

Reefer Plugs

Deck: 411

Holds: Cargo holds are prepared for loading up to the 4th tier 9'6" reefer containers including access for maintenance.

Total: 639

Cooling Water Plugs

-

Remote Reefer Monitoring System

Type: PCT

Maker: Refcon

Version: 6

RDC handheld available: Yes

Fittings

Fully cellularized for 40' containers in holds. 2 x 20' units can be loaded in one 40' cell.

Designated bays for 20' units.

Fitted with loosed lashings for 20'/40' units (OSHA).

Type of twistlocks: Full-automatic.

Cargo holds are prepared for loading up to the 4th tier 9'6" reefer containers including access for maintenance.

Permissible Stackloads

Deck: N/A / 120 mt per 20' / 40' stack

Hatches: 80 / 110 mt per 20' / 40' stack

Except hatch1: 70 / 90 mt per 20' / 40' stack

Holds: 152.5 / 152.5 mt per 20' / 40' stack



SEATRADE ECUADOR

Slot capacity: 1,781 TEU

Hatch sizes

| <u>Hold</u> | <u>Hatches # / Type</u> | <u>Position</u> | <u>length x width</u> | <u>Panels #</u> | <u>Position</u> | <u>length x width</u> | <u>Panels #</u> |
|-------------|-------------------------|-----------------|-----------------------|-----------------|-----------------|-----------------------|-----------------|
| 1 | 2 Pontoon | Fwd | 12.60 x 15.35/10.10 | 2 | | | |
| | | Aft | 12.60 x 20.33 | 2 | | | |
| 2 | 2 Pontoon | Fwd | 12.60 x 25.10 | 2 | | | |
| | | Aft | 12.60 x 25.10 | 2 | | | |
| 3 | 2 Pontoon | Fwd | 12.60 x 25.10 | 2 | | | |
| | | Aft | 12.60 x 25.10 | 2 | | | |
| 4 | 2 Pontoon | Fwd | 12.60 x 25.10 | 2 | | | |
| | | Aft | 12.60 x 25.10 | 2 | | | |

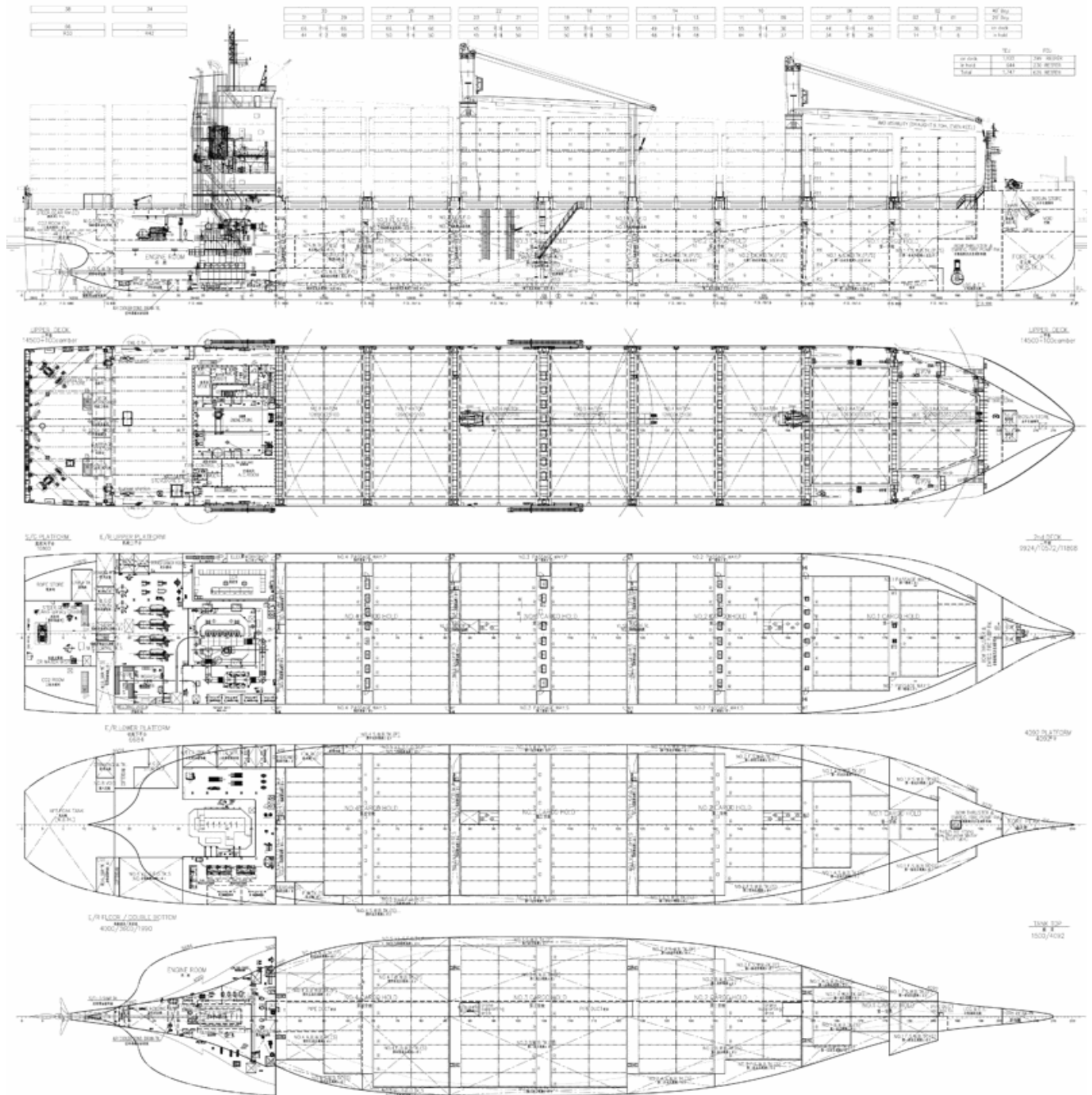
Pontoon type hatch covers are weather tight, open/closed with non-sequential operating, and divided into 2 longitudinal sections.

Maximum panel weight including fixed fittings, bottom twist-locks and turnbuckles is 40 mt.



SEATRADE ECUADOR

Slot capacity: 1,781 TEU



General Remarks

- Nominal Container Intake is based on maximum available empty standard (8'6") container slots whereby IMO visibility rules are respected.
- Effective Container Intake is based on the Nominal Container Intake but then for laden containers with the indicated weight whereby max stackweights are respected.
- Homogeneous TEU Intake at 14 mt is a theoretical figure based on standard (8'6") 20 ft containers of 14 mt, homogeneously loaded with the vertical center of gravity at 45% of the container height. The requirements for minimum stability and maximum draft are hereby respected.

