

SEATRADE CHILE

Slot capacity: 1,781 TEU



General

		GT		NT
Built	March-2024	International	18,680.00	8,028.00
Flag	Liberia	Panama Canal		0.00
Port of Registry	Monrovia	Suez Canal		0.00
Callsign	5LNP3			
IMO/Lloyds nr	9976202			
		Draft		DWAT
Length over all [m]	172.00	Tropical	0.00	0
Beam [m]	28.40	Summer	9.70	24,145
Depth [m]	14.50	Winter	0.00	0
Bowthruster(s)	1 x 1,000kW			
		Design	8.50	19,288

Classification Details

Classification Society	Bureau Veritas (BV)
Main Class symbols	I, +Hull, +Mach
Service Notations	Container Ship
Navigation Notations	Unrestricted Navigation
Additional Class Notations	+AUT-UMS(SS), GREEN PASSPORT(EU), CLEANSHIP, SEEMP, INWATERSURVEY, CPS(WBT), LASHING-WW, LI-HG-S2, MON-SHAFT, TIER-III, COMF-NOISE3, METHANOL(S) READY
Machinery	+MACH
Class' Ice Notation	
Equivalent Finnish/Swedish Ice Strengthening	-

Cargo Gear



SEATRADE CHILE

Slot capacity: 1,781 TEU

Container slot flexibility

	<u>Holds</u>	<u>Deck & Hatches</u>	<u>Total</u>
20'x8'6"(+40'x8'6")	654 (0)	845 (141)	1,499 (141)
40'x8'6"(+20'x8'6")	316 (22)	554 (19)	870 (41)

198 x 45' on deck

Homogeneous intake of TEU's of 14mt: 1,352

Actual intake and distribution always subject to a vessel's stability, trim, bending moments, sheer forces, deadweight, permissible weights, permissible lashing gear break loads, container lashing and stowage plans, ranges of visibility, IMDG stowage/segregation requirements, Panama / Suez Canal Regulations and/or Cargo Securing Manual.

Under stowage

Check container plan for the details.

Reefer Plugs

Deck: 411

Holds: Cargo holds are prepared for loading up to the 4th tier 9'6" reefer containers including access for maintenance.

Total: 639

Cooling Water Plugs

-

Remote Reefer Monitoring System

Type: PCT

Maker: Refcon

Version: 6

RDC handheld available: Yes

Fittings

Fully cellularized for 40' containers in holds. 2 x 20' units can be loaded in one 40' cell.

Designated bays for 20' units.

Fitted with loosed lashings for 20'/40' units (OSHA).

Type of twistlocks: Full-automatic.

Cargo holds are prepared for loading up to the 4th tier 9'6" reefer containers including access for maintenance.

Permissible Stackloads

Deck: -- / 120 mt per 20' / 40' stack

Hatches: 80 / 110 mt per 20' / 40' stack

Except hatch1: 70 / 90 mt per 20' / 40' stack

Holds: 152.5 / 152.5 mt per 20' / 40' stack



SEATRADE CHILE

Slot capacity: 1,781 TEU

Hatch sizes

<u>Hold</u>	<u>Hatches # / Type</u>	<u>Position</u>	<u>length x width</u>	<u>Panels #</u>	<u>Position</u>	<u>length x width</u>	<u>Panels #</u>
1	2	Pontoon	Fwd	12.60 x 15.35/10.10	2		
			Aft	12.60 x 20.33	2		
2	2	Pontoon	Fwd	12.60 x 25.10	2		
			Aft	12.60 x 25.10	2		
3	2	Pontoon	Fwd	12.60 x 25.10	2		
			Aft	12.60 x 25.10	2		
4	2	Pontoon	Fwd	12.60 x 25.10	2		
			Aft	12.60 x 25.10	2		

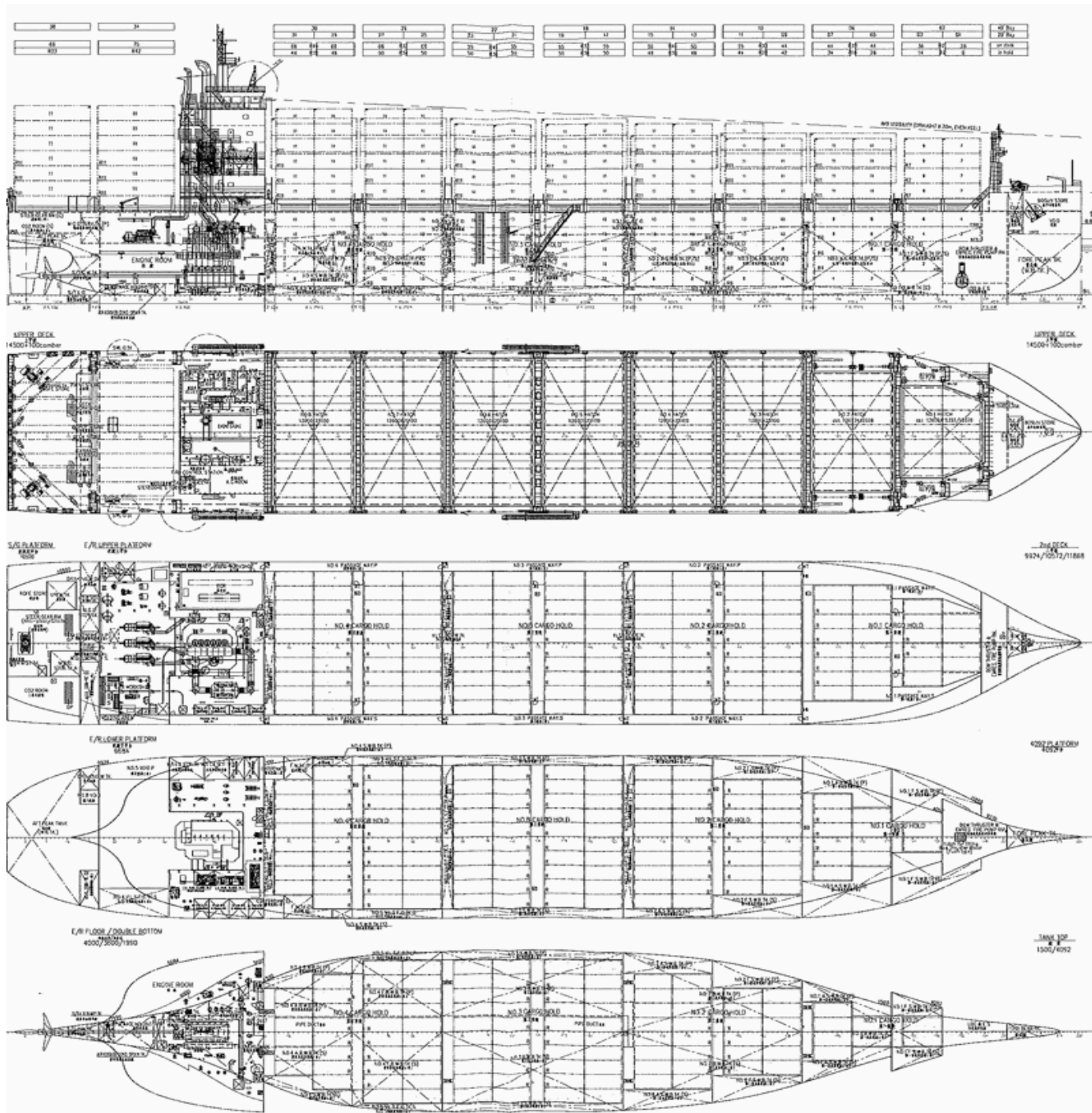
Pontoon type hatch covers are weather tight, open/closed with non-sequential operating, and divided into 2 longitudinal sections.

Maximum panel weight including fixed fittings, bottom twist-locks and turnbuckles is 40 mt.



SEATRADE CHILE

Slot capacity: 1,781 TEU



General Remarks

- Nominal Container Intake is based on maximum available empty standard (8'6") container slots whereby IMO visibility rules are respected.
- Effective Container Intake is based on the Nominal Container Intake but then for laden containers with the indicated weight whereby max stackweights are respected.
- Homogeneous TEU Intake at 14 mt is a theoretical figure based on standard (8'6") 20 ft containers of 14 mt, homogeneously loaded with the vertical center of gravity at 45% of the container height. The requirements for minimum stability and maximum draft are hereby respected.

