

PACIFIC REEFER

596,925 cbft / 6,803 sqm / 8,550 pallets



General

Built	January-1999	International *)	GT 14,505.00/13,055.00	NT 7,624.00
Flag	Liberia	Panama Canal		12,166.00
Port of Registry	Monrovia	Suez Canal		13,035.79
Callsign	D5FE3			
IMO/Lloyds nr	9179268		Draft	DWAT
Length over all [m]	175.72	Tropical		
Beam [m]	22.60	Summer	9.72	17,310
Depth [m]	13.30	Winter		
Bowthruster(s)	-			
Exhaust Gas	Open Loop			
Scrubber		Permanent Ballast		862

*) The first GT value is the official value on the ITC. Because of the special (partly) hatchless design of the vessel, a second GT has been assigned to this vessel which is to be used for calculation of harbour duties etc. This is the second GT value. This value is also shown on the ITC in a remark.

Reefer

Holds	4
Hatches	4
Compartments	19
Minimum Deckheight [m]	
Allowable weight of forklift including cargo	maximum 7 mt (Forklift to be equipped with minimum 4 non hard rubber airtyres)
Temperature zones	8
Cooling sections	1A - 1B - 1C D - 2A B C - 2D E - 3A B C - 3D E - 4A B C - 4D E
Temperature range [dC]	-30/+15
Air circulations [/hr]	90
Air renewals [/hr]	2
USDA equipped	Yes, certificate expired
Controlled Atmosphere	CA pre-piped
Modified Atmosphere	No equipment on board



PACIFIC REEFER

596,925 cbft / 6,803 sqm / 8,550 pallets

Classification Details

Classification Society	Bureau Veritas (BV)
Main Class symbols	I, +Hull
Service Notations	Refrigerated Cargo Ship
Navigation Notations	Unrestricted Navigation
Additional Class Notations	+REF-CARGO, INWATERSURVEY
Machinery	+MACH
Equivalent Finnish/Swedish	
Ice Strengthening	-

Reefer Compartment Capacity Breakdown

	Hold 1		Hold 2		Hold 3		Hold 4		Total	
	Cbft	Sqm	Cbft	Sqm	Cbft	Sqm	Cbft	Sqm	Cbft	Sqm
A	35,352	398.00	18,457	202.00	18,445	203.00	18,274	202.00	90,528	1,005.00
B	26,282	268.00	36,430	433.00	36,037	431.00	39,435	467.00	138,184	1,599.00
C	17,316	181.00	37,816	453.00	41,793	497.00	41,655	480.00	138,580	1,611.00
D	14,007	157.00	33,862	391.00	40,443	479.00	36,378	410.00	124,690	1,437.00
E			31,067	339.00	42,544	483.00	31,332	329.00	104,943	1,151.00
Total	92,957	1,004.00	157,632	1,818.00	179,262	2,093.00	167,074	1,888.00	596,925	6,803.00

Hold 1- 4 Legend

Non insulated Deck, air passes through (aka Spar Deck)

Insulated, air tight Deck or Tanktop

Non Insulated, air tight Deck

Hatch sizes Reefer holds

	Hold 1	Hold 2	Hold 3	Hold 4
	l x b	l x b	l x b	l x b
Deck	8.10 x 6.00	8.10 x 6.00	8.10 x 6.00	8.10 x 6.00
A	8.10 x 6.00	8.10 x 6.00	8.10 x 6.00	8.10 x 6.00
B	8.10 x 6.00	8.10 x 6.00	8.10 x 6.00	8.10 x 6.00
C	5.20 x 5.20	8.10 x 6.00	8.10 x 6.00	8.10 x 6.00
D		8.10 x 6.00	8.10 x 6.00	8.10 x 6.00



PACIFIC REEFER

596,925 cbft / 6,803 sqm / 8,550 pallets

Container slot flexibility

Hold

Deck & Hatches

Total

Homogeneous intake of TEU's of 14mt:

Actual intake and distribution always subject to ao vessel's stability, trim, bending moments, sheer forces, deadweight, permissible weights, permissible lashing gear break loads, container lashing and stowage plans, ranges of visibility, IMDG stowage/segregation requirements, Panama / Suez Canal Regulations and Cargo Securing Manual.

Reefer Plugs

Deck:

Holds:

Total:

Remote Reefer Monitoring System

Type:

Maker:

Version:

RDC handheld available:

Fittings

Permissible Stackloads

Hatch sizes

<u>Hold</u>	<u>Hatches # / Type</u>	<u>Position</u>	<u>length x width</u>	<u>Panels #</u>	<u>Position</u>	<u>length x width</u>	<u>Panels #</u>
X	0 Open Top	None	N/A	0			
Y	0 Open Top	None	N/A	0			

Standard Voyage Container Carrying Capacity

Nr of High Cube (9.5') Reefers	170
of which Selfsustained	170

'Standard Voyage' = voyage from Panama Canal to Rotterdam, with a full cargo of bananas in the holds and departing with full bunker tanks. Containers on this voyage are considered to weigh 26 mt gross.

Reefer Plugs

Nr. of electrical Reefer Plugs	200
--------------------------------	-----

General Note Container Carrying Capacity

Figures for container intake on standard voyage are preliminary



PACIFIC REEFER

596,925 cbft / 6,803 sqm / 8,550 pallets

Cargo Gear

- 2 Cranes x 36.0 mt
- 1 Crane x 8.0 mt
- 1 Crane x 40.0 mt

Exhaust Gas Scrubber

Type of scrubber: Open Loop
 Lowest sulphur% in exhaust gasses based on fuels with max sulphur contents of 3.5%: 0.10 %

- Based on fuel with max Sulphur content of 3.5%:
 - + max 0.5% Sulphur in exhaust gas upto full speed consumption.
 - + max 0.1% Sulphur in exhaust gas on reduced consumption only.
- Local regulations may prohibit use of scrubber in which case alternative low Sulphur fuel/destilate has to be used.

Bunker Tank Capacities

	<u>Cbm (100%)</u>	<u>Cbm at max filling level*</u>	<u>mt**</u>
Bunkertanks dedicated for High Sulphur RMG380 (IFO380)	995	846	838
Overflow/Settling/Daytanks for RMG380 (IFO380)	13	0	0
VLS	165	140	139
Total bunker capacity for RMG380 (IFO380)	1,173	986	977
ULS	314	267	229
Total bunker capacity for DMA (MGO)	314	267	229

*) Vessel shall not mix bunkers from different bunkerings in 1 bunker tank. This may reduce the actual bunker capacity.

**) Capacity in mt serve as indication only. Actual capacity in mt depending on the specific gravity and temperature of the supplied bunkers.

Vessel to be solely supplied with fuels as per ISO 8217:2010 or any subsequent amendment thereof. All supplied fuels shall be suitable to enable main propulsion and auxiliary machinery to operate efficiently and without harmful effects and in line with any national and/or international requirements. Fuels to be mineral based products and shall not contain waste lubricants (ULO), chemicals or any other harmful substances and shall be of homogenous and stable nature. Charterers to buy and arrange bunkers only from qualified suppliers and/or from majors and carry out their own quality checks as deemed necessary for their control.

Charterers warrant that whenever bunkers are ordered for the vessel, the order not to put a lien on the vessel and explicitly request "The Products shall not include waste chemicals, waste lubricants and/or other non-fuel components."

BIMCO Bunker Fuel Sulphur Content clause for Time Charter parties 2004 to apply.

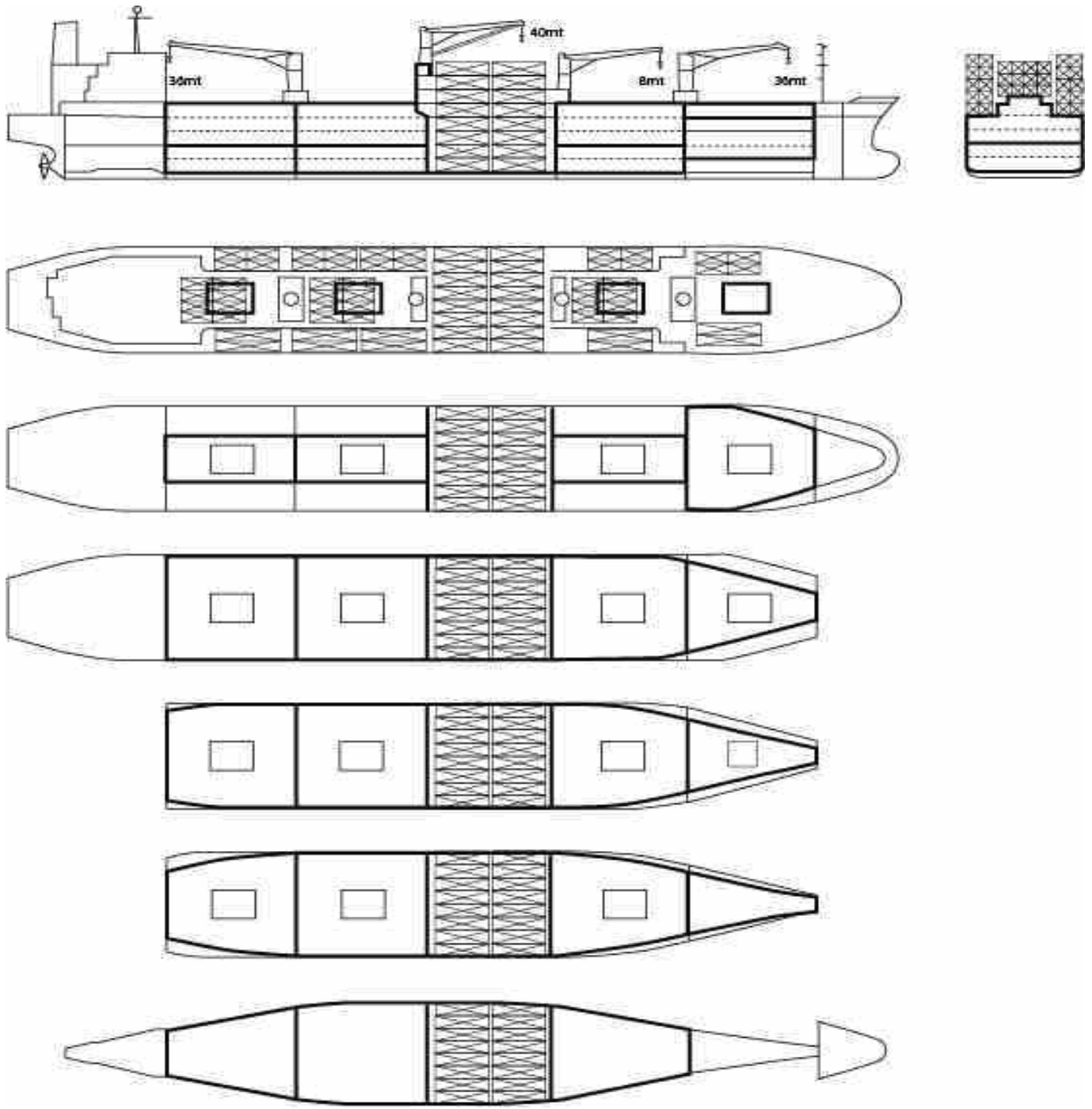
If vessel is redelivered in an ECA area, Charterers warrant that vessel will be redelivered with sufficient bunkers suitable for consumption as per the requirements of the relevant ECA area to reach a port or place where suitable bunkers may be supplied.

Vessel participates in fuel testing program. Samples are taken during each fuel from each supplied grade. Costs involved to be equally shared between Owners and Charterers. Vessel shall not consume any supplied fuel without having received full fuel analysis report confirming the fuel's quality.



PACIFIC REEFER

596,925 cbft / 6,803 sqm / 8,550 pallets



General Remarks

- Pallet Intake figures are indication only. The figures are based on a stowage factor of 1.32 pallet/sqm in reefer holds, full load of reefer containers based on the standard voyage with 20 pallets in each container

