

SANTA CATHARINA

463,986 cbft / 5,140 sqm / 5,930 pallets



General

Built	October-2000	International	GT	NT
Flag	Bahamas	Panama Canal	8,597.00	4,737.00
Port of Registry	Nassau	Suez Canal		7,416.00
Callsign	C6RL4			7,464.45
IMO/Lloyds nr	9213777		Draft	DWAT
Length over all [m]	143.00	Tropical	9.42	
Beam [m]	21.80	Summer	9.27	9,635
Depth [m]	13.00	Winter	9.08	9,113
Bowthruster(s)	1			

Reefer

Holds	4
Hatches	4
Compartments	14
Minimum Deckheight [m]	
Allowable weight of forklift including cargo	maximum 9 mt (Forklift to be equipped with minimum 4 non hard rubber airtyres)
Temperature zones	8
Cooling sections	1A - 1B - 2A - 2B - 2C - 2D - 3A - 3B - 3C - 3D - 4A - 4B - 4C - 4D
Temperature range [dC]	-25
Air circulations [/hr]	90
Air renewals [/hr]	4
USDA equipped	Yes, certificate expired
Controlled Atmosphere	CA pre-piped
Modified Atmosphere	No equipment on board



SANTA CATHARINA

463,986 cbft / 5,140 sqm / 5,930 pallets

Classification Details

Classification Society	Bureau Veritas (BV)
Main Class symbols	I, +Hull, +MACH
Service Notations	Container ship, Refrigerated cargo ship
Navigation Notations	Unrestricted Navigation
Additional Class Notations	Ice Class 1A, AUT-UMS, MON-SHAFT, +REF-CARGO-AIRCONT
Machinery	+MACH
Equivalent Finnish/Swedish	
Ice Strengthening	IA

Reefer Compartment Capacity Breakdown

	Hold 1		Hold 2		Hold 3		Hold 4		Total	
	Cbft	Sqm	Cbft	Sqm	Cbft	Sqm	Cbft	Sqm	Cbft	Sqm
A	24,553	247.30	40,289	425.00	41,142	443.80	40,528	444.60	146,512	1,560.70
B	16,700	185.80	35,049	406.30	38,217	446.20	38,176	453.90	128,142	1,492.20
C			30,233	341.70	37,879	449.30	35,043	396.30	103,155	1,187.30
D			23,324	231.30	34,794	380.00	28,059	288.80	86,177	900.10
Total	41,253	433.10	128,895	1,404.30	152,032	1,719.30	141,806	1,583.60	463,986	5,140.30

Hold 1- 4 Legend

Non insulated Deck, air passes through (aka Spar Deck)

Insulated, air tight Deck or Tanktop

Non Insulated, air tight Deck

Hatch sizes

	Hold 1	Hold 2	Hold 3	Hold 4
	l x b	l x b	l x b	l x b
Deck	7.00 x 8.00	12.60 x 8.00	12.60 x 8.00	12.60 x 8.00
A		-		
B		-		
C		-		



SANTA CATHARINA

463,986 cbft / 5,140 sqm / 5,930 pallets

Container Carrying Capacity		Max FEU's	Add. TEU's	Max TEU's	Add. FEU's
<u>On Weather Deck and Hatches</u>					
Empty Positions	Standard	118	0	227	0
Max Stackweight	Standard	111	0	150	24
Max Stackweight - Self-sustained	Standard	111	0	150	24
Empty Positions	High Cube	115	0	227	0
Max Stackweight	High Cube	108	0	150	24
Max Stackweight - Self-sustained	High Cube	108	0	150	24
<u>Reefer Hold</u>					
Empty Positions	Standard	36	6	78	0
Max Stackweight	Standard	36	6	78	0
Max Stackweight - Self-sustained	Standard	36	6	78	0
Empty Positions	High Cube	27	6	78	0
Max Stackweight - Self-sustained	High Cube	27	6	78	0

'Max Stackweight' and 'Max Stackweight - Self-sustained' are the number of laden containers that can be loaded basis the maximum stackweight, calculating 26 mt gross for a laden FEU and 14 mt gross for a laden TEU

Above figures are as per vessel's technical layout. Actual container intake is subject to master's approval and depending on stability, stackweight and visibility.

Standard Voyage Container Carrying Capacity

Nr of High Cube (9.5') Reefers 102
of which Self-sustained 102

'Standard Voyage' = voyage from Panama Canal to Rotterdam, with a full cargo of bananas in the holds and departing with full bunker tanks. Containers on this voyage are considered to weigh 26 mt gross.

Reefer Plugs

Nr. of electrical Reefer Plugs 135

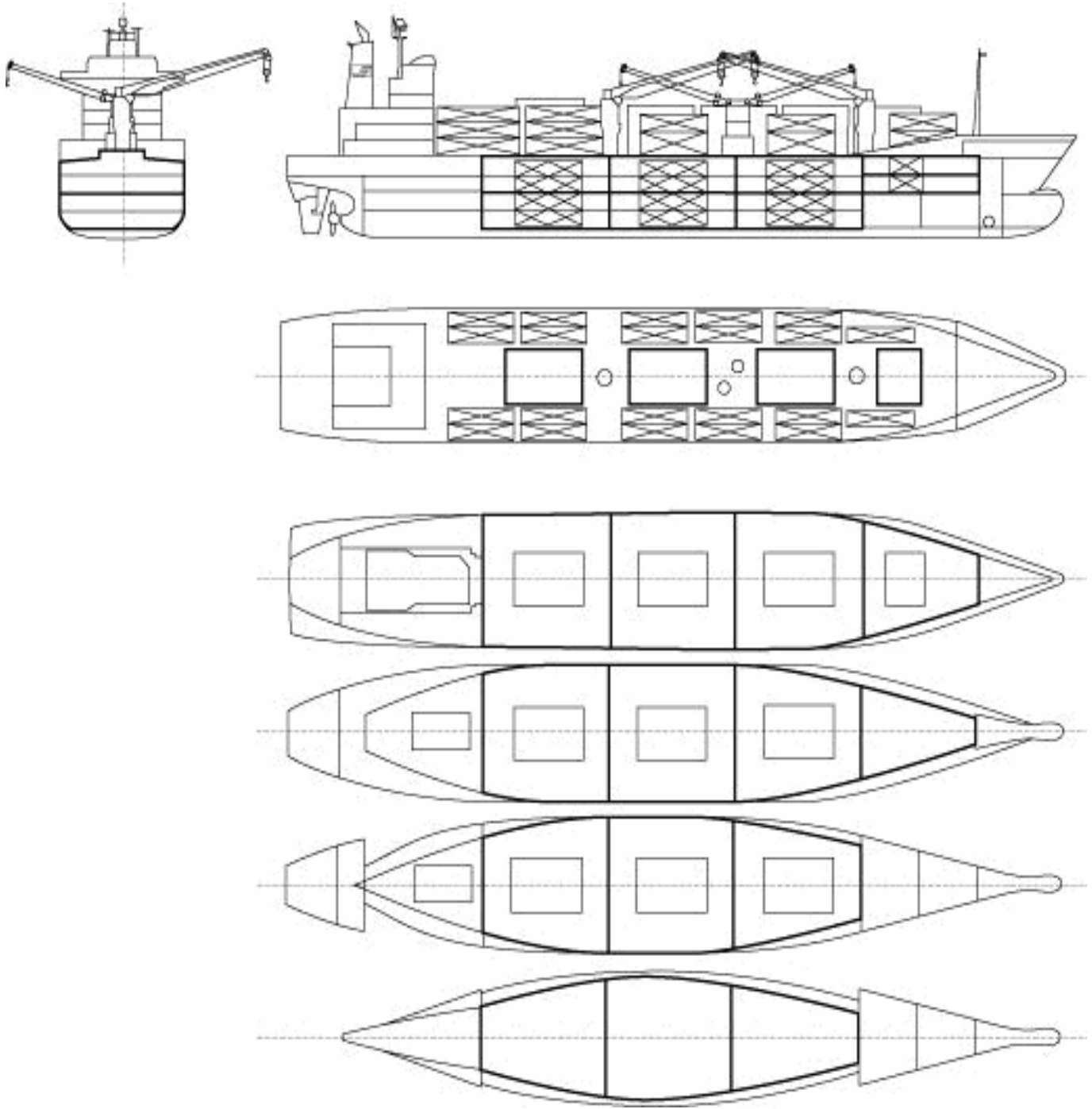
Cargo Gear

2 Cranes x 40.0 mt
2 Cranes x 8.0 mt



SANTA CATHARINA

463,986 cbft / 5,140 sqm / 5,930 pallets



General Remarks

- Pallet Intake figures are indication only. The figures are based on a stowage factor of 1.32 pallet/sqm in reefer holds, full load of reefer containers based on the standard voyage with 20 pallets in each container

