

DISCOVERY BAY

534,246 cbft / 5,922 sqm / 6,480 pallets



General

Built	February-1997	International	GT	NT
Flag	Bahamas	Panama Canal	8,924.00	4,685.00
Port of Registry	Nassau	Suez Canal		7,752.00
Callsign	C6OP3			8,009.12
IMO/Lloyds nr	9143740		Draft	DWAT
Length over all [m]	143.00	Tropical		10,400
Beam [m]	22.00	Summer	8.82	10,100
Depth [m]	13.00	Winter		10,000
Bowthruster(s)	1			

Reefer

Holds	4
Hatches	4
Compartments	15
Minimum Deckheight [m]	
Allowable weight of forklift including cargo	maximum 6 mt (Forklift to be equipped with minimum 4 non hard rubber airtyres)
Temperature zones	8
Cooling sections	1A B - 1C - 2A B - 2C D - 3A B - 3C D - 4A B - 4C D
Temperature range [dC]	-25/+15
Air circulations [/hr]	90
Air renewals [/hr]	4
USDA equipped	Yes, certificate expired
Controlled Atmosphere	CA pre-piped
Modified Atmosphere	No equipment on board



DISCOVERY BAY

534,246 cbft / 5,922 sqm / 6,480 pallets

Classification Details

Classification Society	Bureau Veritas (BV)
Main Class symbols	I, +HULL, +MACH
Service Notations	+Refrigerated cargo ship, Equiped for carriage of containers
Navigation Notations	Unrestricted Navigation
Additional Class Notations	+REF-CARGO-AIRCONT
Machinery	+MACH
Equivalent Finnish/Swedish	
Ice Strenghtening	-

Reefer Compartment Capacity Breakdown

	Hold 1		Hold 2		Hold 3		Hold 4		Total	
	Cbft	Sqm	Cbft	Sqm	Cbft	Sqm	Cbft	Sqm	Cbft	Sqm
A	42,203	423.60	39,136	457.20	39,260	455.20	40,847	448.80	161,446	1,784.80
B	29,372	303.50	36,548	433.70	38,392	443.10	38,540	437.10	142,852	1,617.40
C	23,456	249.40	36,766	415.60	38,621	455.50	35,422	391.60	134,265	1,512.10
D			30,413	321.20	36,284	394.50	28,986	291.70	95,683	1,007.40
Total	95,031	976.50	142,863	1,627.70	152,557	1,748.30	143,795	1,569.20	534,246	5,921.70

Hold 1- 4 Legend

Non insulated Deck, air passes through (aka Spar Deck)

Insulated, air tight Deck or Tanktop

Non Insulated, air tight Deck

Hatch sizes

	Hold 1	Hold 2	Hold 3	Hold 4
	l x b	l x b	l x b	l x b
Deck	7.00 x 8.00	7.00 x 8.00	7.00 x 8.00	7.00 x 8.00
A		-		
B		-		
C		-		



DISCOVERY BAY

534,246 cbft / 5,922 sqm / 6,480 pallets

Container Carrying Capacity		Max FEU's	Add. TEU's	Max TEU's	Add. FEU's
<u>On Weather Deck and Hatches</u>					
Empty Positions	Standard	100	0	152	24
Max Stackweight	Standard	100	0	152	24
Max Stackweight - Self-sustained	Standard	100	0	152	24
Empty Positions	High Cube	100	0	152	24
Max Stackweight	High Cube	100	0	152	24
Max Stackweight - Self-sustained	High Cube	100	0	152	24
<u>Reefer Hold</u>					
Empty Positions	Standard	0	0	42	0
Max Stackweight	Standard	0	0	42	0
Max Stackweight - Self-sustained	Standard	0	0	42	0
Empty Positions	High Cube	0	0	42	0
Max Stackweight	High Cube	0	0	42	0
Max Stackweight - Self-sustained	High Cube	0	0	42	0

'Max Stackweight' and 'Max Stackweight - Self-sustained' are the number of laden containers that can be loaded basis the maximum stackweight, calculating 26 mt gross for a laden FEU and 14 mt gross for a laden TEU

Above figures are as per vessel's technical layout. Actual container intake is subject to master's approval and depending on stability, stackweight and visibility.

Standard Voyage Container Carrying Capacity

Nr of High Cube (9.5') Reefers 100
of which Self-sustained 100

'Standard Voyage' = voyage from Panama Canal to Rotterdam, with a full cargo of bananas in the holds and departing with full bunker tanks. Containers on this voyage are considered to weigh 26 mt gross.

Reefer Plugs

Nr. of electrical Reefer Plugs 100

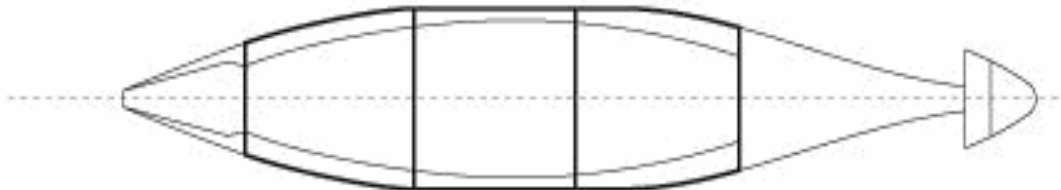
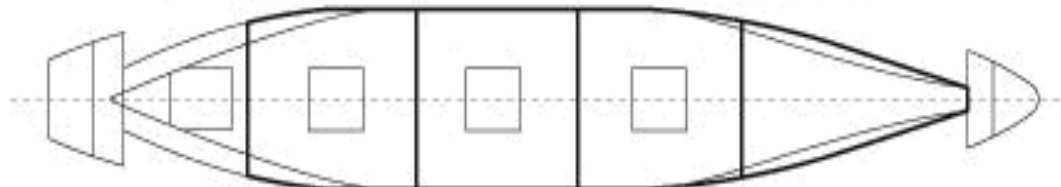
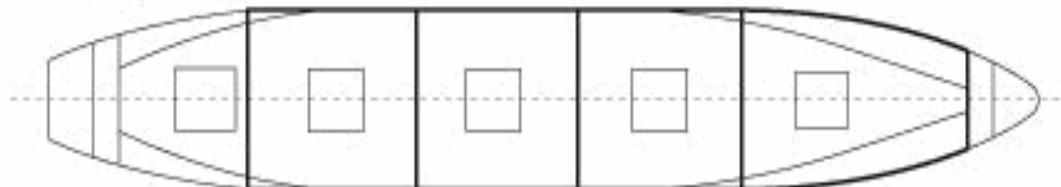
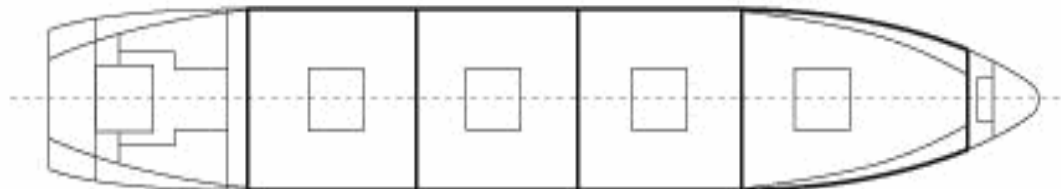
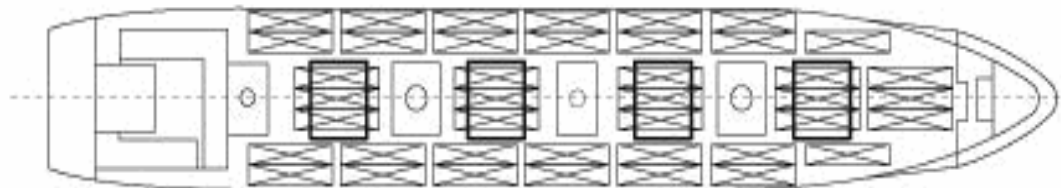
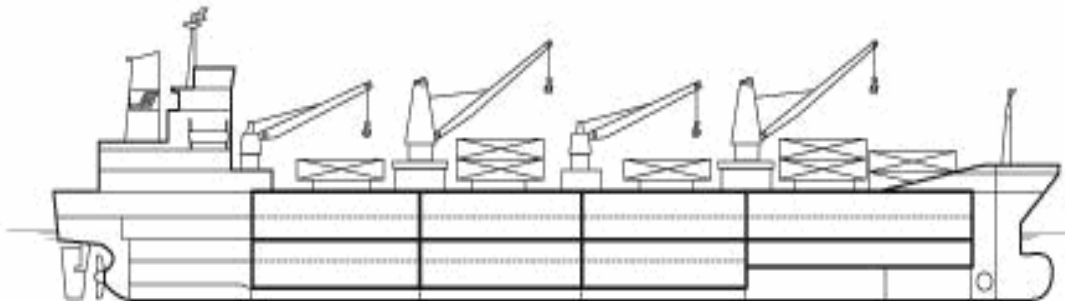
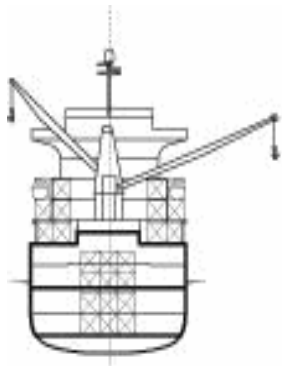
Cargo Gear

2 Cranes x 40.0 mt
2 Cranes x 10.0 mt



DISCOVERY BAY

534,246 cbft / 5,922 sqm / 6,480 pallets



General Remarks

- Pallet Intake figures are indication only. The figures are based on a stowage factor of 1.32 pallet/sqm in reefer holds, full load of reefer containers based on the standard voyage with 20 pallets in each container

