

WHITNEY BAY

449,175 cbft / 5,208 sqm / 3,945 pallets



General

Built	February-1990	International	GT 8,739.00	NT 4,085.00
Flag	Liberia	Panama Canal		7,760.00
Port of Registry	Monrovia	Suez Canal		7,277.96
Callsign	A8KZ8			
IMO/Lloyds nr	8911085		Draft	DWAT
Length over all [m]	141.01	Tropical		
Beam [m]	20.60	Summer	8.51	9,687
Depth [m]	13.00	Winter		
Bowthruster(s)	-			

Reefer

Holds	4
Hatches	4
Compartments	19
Minimum Deckheight [m]	2.20 (excl local areas)
Allowable weight of forklift including cargo	maximum 5 mt (Forklift to be equipped with minimum 4 non hard rubber airtyres)
Temperature zones	8
Cooling sections	1UPDA 1BC 2UPDAB 2CD 3UPDAB 3CD 4UPDAB 4CD
Temperature range [dC]	-25/+15
Air circulations [/hr]	90
Air renewals [/hr]	4
USDA equipped	Yes, valid until 16-July-2022
Controlled Atmosphere	None
Modified Atmosphere	No equipment on board



WHITNEY BAY

449,175 cbft / 5,208 sqm / 3,945 pallets

Classification Details

Classification Society	Nippon Kaiji Kyokai (NKK)
Classification characters	NS* (EQ CV) / MNS*
Installation characters	RMC*, CHG, MPP, LSA, RCF
Special Description	
Other Classification	
Equivalent Finnish/Swedish	
Ice Strengthening	-

Reefer Compartment Capacity Breakdown

	Hold 1		Hold 2		Hold 3		Hold 4		Total	
	Cbft	Sqm	Cbft	Sqm	Cbft	Sqm	Cbft	Sqm	Cbft	Sqm
UPD	6,421	69.71	7,778	84.93	7,812	85.16	7,771	84.84	29,782	324.64
A	25,417	274.86	32,767	401.34	29,907	370.12	31,791	394.63	119,882	1,440.95
B	18,687	200.83	31,765	372.90	29,517	349.95	31,808	373.12	111,777	1,296.80
C	15,596	176.40	30,114	353.06	30,728	370.37	31,914	367.41	108,352	1,267.24
D			26,011	284.37	28,904	338.78	24,467	255.49	79,382	878.64
Total	66,121	721.80	128,435	1,496.60	126,868	1,514.38	127,751	1,475.49	449,175	5,208.27

Hold 1-4 Legend

Non insulated Deck, air passes through (aka Spar Deck)

Insulated, air tight Deck or Tanktop

Non Insulated, air tight Deck

Hatch sizes

	Hold 1	Hold 2	Hold 3	Hold 4
	l x b	l x b	l x b	l x b
Deck	7.35 x 6.00	8.10 x 6.00	8.10 x 6.00	8.10 x 6.00
UPD	7.30 x 6.00	8.10 x 6.00	8.10 x 6.00	8.10 x 6.00
A	7.30 x 6.00	8.10 x 6.00	8.10 x 6.00	8.10 x 6.00
B	7.30 x 5.20	8.10 x 6.00	8.10 x 6.00	8.10 x 6.00
C		8.10 x 6.00	8.10 x 6.00	8.10 x 6.00

Container Carrying Capacity

Container Carrying Capacity	Max FEU's	Add. TEU's	Max TEU's	Add. FEU's
<u>On Weather Deck and Hatches</u>				
Empty Positions	Standard	0	0	0
Max Stackweight	Standard	0	0	0
Max Stackweight - Self-sustained	Standard	0	0	0
<u>Reefer Hold</u>				
Empty Positions	Standard	0	0	0
Max Stackweight	Standard	0	0	0
Max Stackweight - Self-sustained	Standard	0	0	0

'Max Stackweight' and 'Max Stackweight - Self-sustained' are the number of laden containers that can be loaded basis the maximum stackweight, calculating 26 mt gross for a laden FEU and 14 mt gross for a laden TEU

Above figures are as per vessel's technical layout. Actual container intake is subject to master's approval and depending on stability, stackweight and visibility.



WHITNEY BAY

449,175 cbft / 5,208 sqm / 3,945 pallets

Standard Voyage Container Carrying Capacity

Nr of High Cube (9.5') Reefers	0
of which Selfsustained	0

'Standard Voyage' = voyage from Panama Canal to Rotterdam, with a full cargo of bananas in the holds and departing with full bunker tanks. Containers on this voyage are considered to weigh 26 mt gross.

Reefer Plugs

Nr. of electrical Reefer Plugs	0
--------------------------------	---

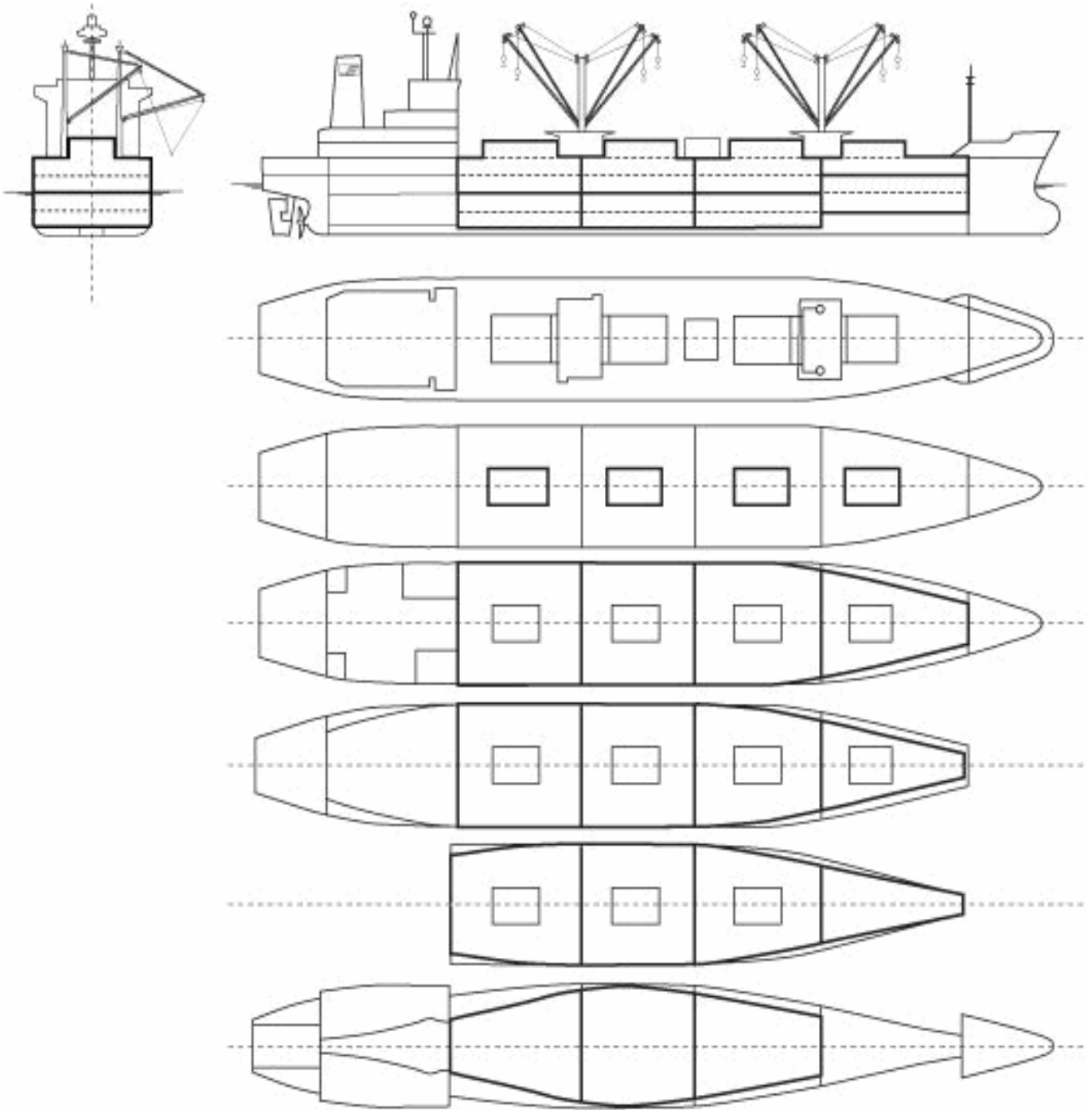
Cargo Gear

8 Derricks x 5.0 mt or 4 x 3.5 mt in Union Purchase



WHITNEY BAY

449,175 cbft / 5,208 sqm / 3,945 pallets



General Remarks

- Pallet Intake figures are indication only. The figures are based on a stowage factor of 1.32 pallet/sqm in reefer holds, full load of reefer containers based on the standard voyage with 20 pallets in each container

