

# COLD STREAM

456,785 cbft / 5,217 sqm / 5,952 pallets



## General

Built	February-1994	International	<b>GT</b> 8,414.00	<b>NT</b> 4,542.00
Flag	Dutch	Panama Canal		7,729.00
Port of Registry	Willemstad	Suez Canal		7,388.32
Callsign	PJRH			
IMO/Lloyds nr	9051791		<b>Draft</b>	<b>DWAT</b>
Length over all [m]	140.00	Tropical	9.51	10,534
Beam [m]	22.00	Summer	9.32	10,086
Depth [m]	13.40	Winter	9.12	9,643
Bowthruster(s)	1			

## Reefer

Holds	4
Hatches	4
Compartments	15
Minimum Deckheight [m]	2.20 (excl local areas)
Allowable weight of forklift including cargo	maximum 6 mt (Forklift to be equipped with minimum 4 non hard rubber airtyres)
Temperature zones	9
Cooling sections	1A   1B   1C   2AB   2CD   3AB   3CD   4AB   4CD
Temperature range [dC]	-25/+12
Air circulations [/hr]	90
Air renewals [/hr]	4
USDA equipped	Yes, valid until 11-January-2023
Controlled Atmosphere	CA pre-piped
Modified Atmosphere	No equipment on board



# COLD STREAM

456,785 cbft / 5,217 sqm / 5,952 pallets

## Classification Details

Classification Society	Bureau Veritas (BV)
Main Class symbols	I, +Hull, +MACH
Service Notations	Refrigerated cargo ship
Navigation Notations	Unrestricted Navigation
Additional Class Notations	+REF-CARGO-AIRCONT
Machinery	+MACH
Equivalent Finnish/Swedish	
Ice Strengthening	-

## Reefer Compartment Capacity Breakdown

	Hold 1		Hold 2		Hold 3		Hold 4		Total	
	Cbft	Sqm	Cbft	Sqm	Cbft	Sqm	Cbft	Sqm	Cbft	Sqm
A	36,059	351.80	37,941	431.00	35,880	409.00	38,024	434.50	147,904	1,626.30
B	24,246	264.00	34,930	410.70	33,565	398.50	34,945	399.00	127,686	1,472.20
C	15,413	159.10	33,080	389.40	34,333	412.30	31,960	364.00	114,786	1,324.80
D			21,236	254.50	25,347	302.80	19,826	236.70	66,409	794.00
<b>Total</b>	<b>75,718</b>	<b>774.90</b>	<b>127,187</b>	<b>1,485.60</b>	<b>129,125</b>	<b>1,522.60</b>	<b>124,755</b>	<b>1,434.20</b>	<b>456,785</b>	<b>5,217.30</b>

Hold 1- 4 Legend

Non insulated Deck, air passes through (aka Spar Deck)

Insulated, air tight Deck or Tanktop

Non Insulated, air tight Deck

## Hatch sizes

	Hold 1	Hold 2	Hold 3	Hold 4
	l x b	l x b	l x b	l x b
Deck	7.00 x 11.00	7.00 x 11.00	7.00 x 11.00	7.00 x 11.00
A	7.00 x 11.00	7.00 x 11.00	7.00 x 11.00	7.00 x 11.00
B	7.00 x 8.00	7.00 x 11.00	7.00 x 11.00	7.00 x 11.00
C		7.00 x 11.00	7.00 x 11.00	7.00 x 11.00



# COLD STREAM

456,785 cbft / 5,217 sqm / 5,952 pallets

Container Carrying Capacity		Max FEU's	Add. TEU's	Max TEU's	Add. FEU's
<u>On Weather Deck and Hatches</u>					
Empty Positions	Standard	117	12	238	0
Max Stackweight	Standard	114	8	180	0
Max Stackweight - Self-sustained	Standard	114	8	180	0
Empty Positions	High Cube	113	12	238	0
Max Stackweight	High Cube	110	8	180	0
Max Stackweight - Self-sustained	High Cube	110	8	180	0
<u>Reefer Hold</u>					
Empty Positions	Standard	0	0	57	0
Max Stackweight	Standard	0	0	57	0
Max Stackweight - Self-sustained	Standard	0	0	57	0
Empty Positions	High Cube	0	0	57	0
Max Stackweight	High Cube	0	0	57	0
Max Stackweight - Self-sustained	High Cube	0	0	57	0

'Max Stackweight' and 'Max Stackweight - Self-sustained' are the number of laden containers that can be loaded basis the maximum stackweight, calculating 26 mt gross for a laden FEU and 14 mt gross for a laden TEU  
 Above figures are as per vessel's technical layout. Actual container intake is subject to master's approval and depending on stability, stackweight and visibility.

## Standard Voyage Container Carrying Capacity

Nr of High Cube (9.5') Reefers 100  
 of which Self-sustained 100

'Standard Voyage' = voyage from Panama Canal to Rotterdam, with a full cargo of bananas in the holds and departing with full bunker tanks. Containers on this voyage are considered to weigh 26 mt gross.

## Reefer Plugs

Nr. of electrical Reefer Plugs 106

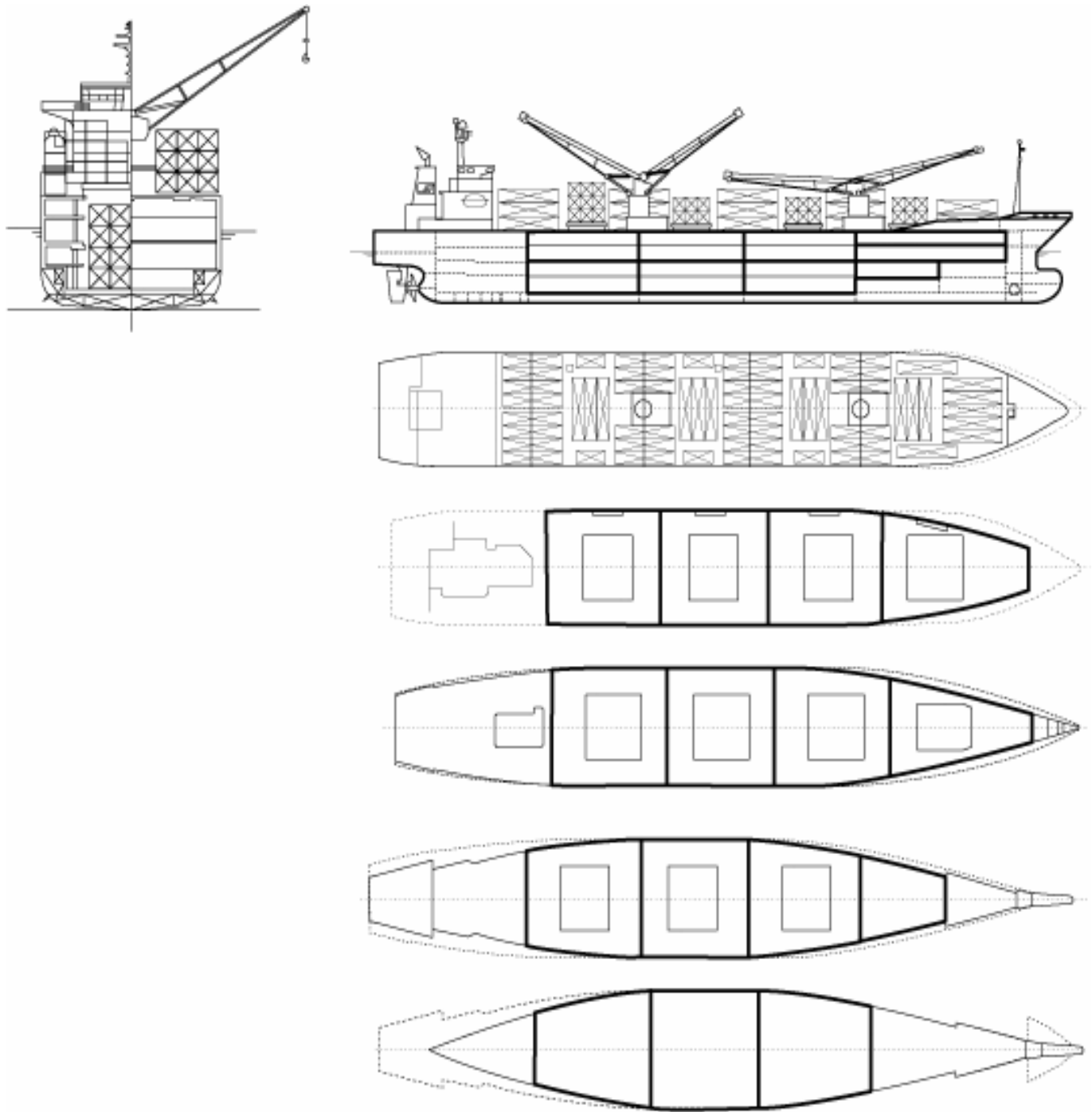
## Cargo Gear

4 Cranes x 20.0 mt or 2 x 40.0 mt in Twin



# COLD STREAM

456,785 cbft / 5,217 sqm / 5,952 pallets



## General Remarks

- Pallet Intake figures are indication only. The figures are based on a stowage factor of 1.32 pallet/sqm in reefer holds, full load of reefer containers based on the standard voyage with 20 pallets in each container

