

# BARRINGTON ISLAND

622,844 cbft / 7,317 sqm / 14,140 mt DWAT



## General

Built	September-1993	International	<b>GT</b> 14,061.00	<b>NT</b> 6,900.00
Flag	Bahamas	Panama Canal		11,902.00
Port of Registry	Nassau	Suez Canal		0.00
Callsign	C6QK			
IMO/Lloyds nr	9059614		<b>Draft</b>	<b>DWAT</b>
Length over all [m]	179.90	Tropical	0.00	0
Beam [m]	25.20	Summer	9.21	14,140
Depth [m]	13.20	Winter	0.00	0
Bowthruster(s)	-			

## Reefer

Holds	4
Hatches	4
Compartments	15
Minimum Deckheight [m]	2.29 (excl local areas)
Allowable weight of forklift including cargo	maximum 6 mt (Forklift to be equipped with minimum 4 non hard rubber airtyres)
Temperature zones	8
Cooling sections	1A   1BC   2AB   2CD   3AB   3CD   4AB   4CD
Temperature range [dC]	-29/+13
Air circulations [/hr]	90
Air renewals [/hr]	0
USDA equipped	Yes, certificate expired
Controlled Atmosphere	CA pre-piped
Modified Atmosphere	No equipment on board

## Classification Details

Classification Society	Lloyd'S Register (LR)
Classification	+100A1
Hull Notation	certified container securing arrangements
Machinery Notation	+LMC, UMS, +Lloyds RMC, SCM, Russian Ice1
Equivalent Finnish/Swedish Ice Strenghtening	-



# BARRINGTON ISLAND

622,844 cbft / 7,317 sqm / 14,140 mt DWAT

## Reefer Compartment Capacity Breakdown

	Hold 1		Hold 2		Hold 3		Hold 4		Total	
	Cbft	Sqm	Cbft	Sqm	Cbft	Sqm	Cbft	Sqm	Cbft	Sqm
A	53,042	578.00	53,431	594.00	50,182	559.00	50,358	557.00	207,013	2,288.00
B	33,902	395.00	44,814	548.00	46,333	563.00	46,404	560.00	171,453	2,066.00
C	21,507	263.00	39,305	478.00	46,651	564.00	43,472	528.00	150,935	1,833.00
D			29,982	355.00	35,986	438.00	27,475	337.00	93,443	1,130.00
<b>Total</b>	<b>108,451</b>	<b>1,236.00</b>	<b>167,532</b>	<b>1,975.00</b>	<b>179,152</b>	<b>2,124.00</b>	<b>167,709</b>	<b>1,982.00</b>	<b>622,844</b>	<b>7,317.00</b>

Hold 1- 4 Legend

Non insulated Deck, air passes through (aka Spar Deck)

Insulated, air tight Deck or Tanktop

Non Insulated, air tight Deck

## Hatch sizes

	Hold 1	Hold 2	Hold 3	Hold 4
	l x b	l x b	l x b	l x b
Deck	13.70 x 10.70	13.70 x 10.70	13.70 x 10.70	13.70 x 10.70
A		-		
B		-		
C		-		

Container Carrying Capacity	Max FEU's	Add. TEU's	Max TEU's	Add. FEU's	
<u>On Weather Deck and Hatches</u>					
Empty Positions	Standard	157	10	324	0
Max Stackweight	Standard	156	10	322	0
Max Stackweight - Self-sustained	Standard	156	10	322	0
Empty Positions	High Cube	157	10	324	0
Max Stackweight	High Cube	156	10	322	0
Max Stackweight - Self-sustained	High Cube	156	10	322	0
<u>Reefer Hold</u>					
Empty Positions	Standard	56	0	112	0
Max Stackweight	Standard	56	0	112	0
Max Stackweight - Self-sustained	Standard	56	0	112	0
Empty Positions	High Cube	40	0	80	0
Max Stackweight	High Cube	40	0	80	0
Max Stackweight - Self-sustained	High Cube	40	0	80	0

'Max Stackweight' and 'Max Stackweight - Self-sustained' are the number of laden containers that can be loaded basis the maximum stackweight, calculating 26 mt gross for a laden FEU and 14 mt gross for a laden TEU

Above figures are as per vessel's technical layout. Actual container intake is subject to master's approval and depending on stability, stackweight and visibility.



# BARRINGTON ISLAND

622,844 cbft / 7,317 sqm / 14,140 mt DWAT

## Standard Voyage Container Carrying Capacity

Nr of High Cube (9.5') Reefers	0
of which Selfsustained	0

*'Standard Voyage' = voyage from Panama Canal to Rotterdam, with a full cargo of bananas in the holds and departing with full bunker tanks. Containers on this voyage are considered to weigh 26 mt gross.*

## Reefer Plugs

Nr. of electrical Reefer Plugs	163
--------------------------------	-----

## Cargo Gear

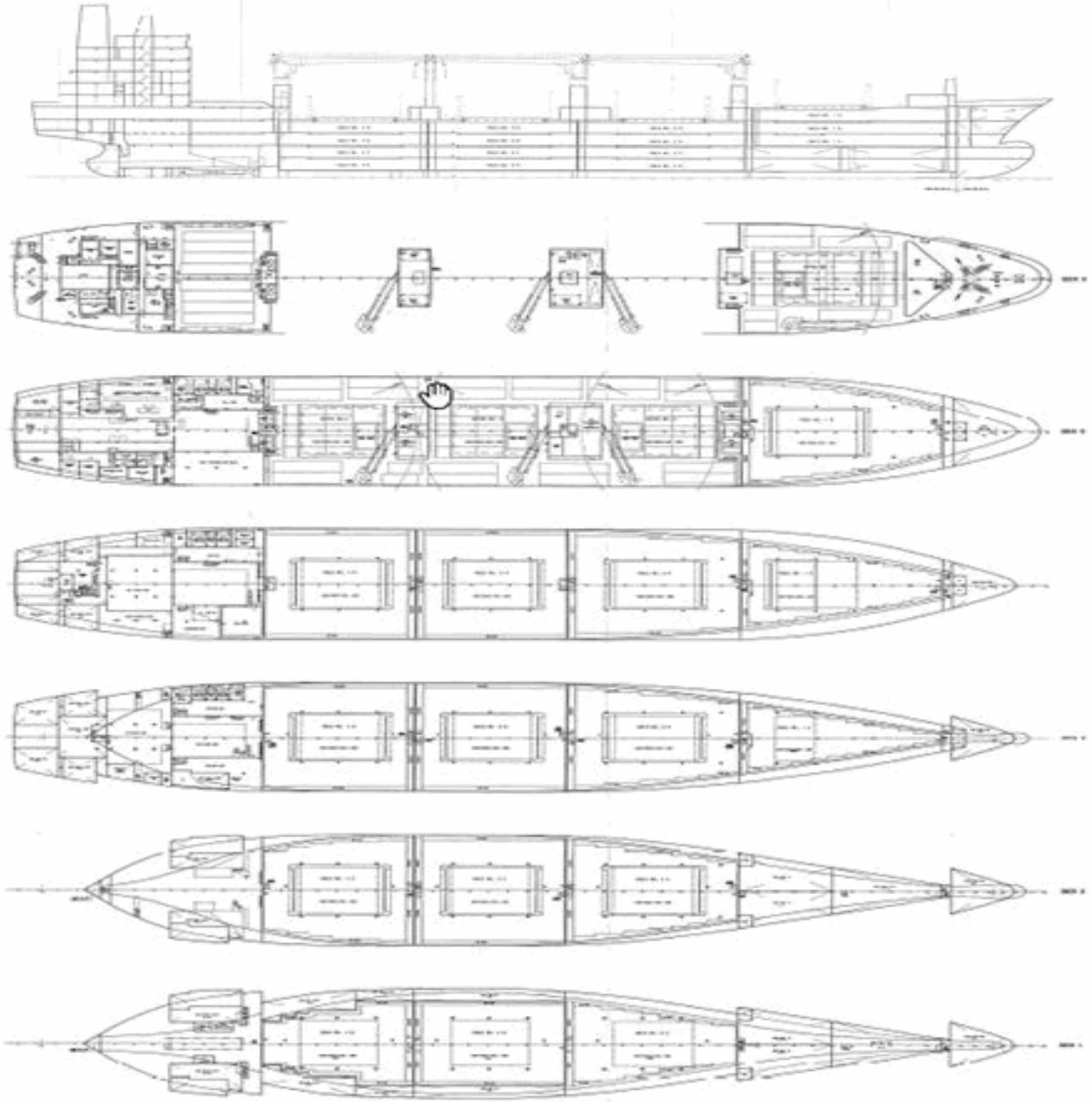
3 Cranes x 40.0 mt

4 Pallet Cranes x 8.0 mt



# BARRINGTON ISLAND

622,844 cbft / 7,317 sqm / 14,140 mt DWAT



## General Remarks

- Pallet Intake figures are indication only. The figures are based on a stowage factor of 1.32 pallet/sqm in reefer holds, full load of reefer containers based on the standard voyage with 20 pallets in each container

