

ACONCAGUA BAY

512,361 cbft / 5,894 sqm / 4,845 pallets



General

Built	April-1992	International	GT 9,074.00	NT 5,844.00
Flag	Liberia	Panama Canal		8,095.00
Port of Registry	Monrovia	Suez Canal		7,888.83
Callsign	A8KY9			
IMO/Lloyds nr	9019652		Draft	DWAT
Length over all [m]	148.50	Tropical	9.61	12,039
Beam [m]	20.60	Summer	9.42	11,581
Depth [m]	12.80	Winter	9.22	11,128
Bowthruster(s)	-			

Reefer

Holds	4
Hatches	4
Compartments	19
Minimum Deckheight [m]	2.20 (excl local areas)
Allowable weight of forklift including cargo	maximum 6 mt (Forklift to be equipped with minimum 4 non hard rubber airtyres)
Temperature zones	8
Cooling sections	1AB 1CD 2UPDAB 2CD 3UPDAB 3CD 4UPDAB 4CD
Temperature range [dC]	-25/+15
Air circulations [/hr]	90
Air renewals [/hr]	0
USDA equipped	Yes, valid until 13-December-2023
Controlled Atmosphere	None
Modified Atmosphere	No equipment on board



ACONCAGUA BAY

512,361 cbft / 5,894 sqm / 4,845 pallets

Classification Details

Classification Society	Bureau Veritas (BV)
Main Class symbols	I, +Hull, +MACH
Service Notations	Refrigerated cargo ship
Navigation Notations	Unrestricted Navigation
Additional Class Notations	+REF-CARGO
Machinery	+MACH
Equivalent Finnish/Swedish	
Ice Strengthening	-

Reefer Compartment Capacity Breakdown

	Hold 1		Hold 2		Hold 3		Hold 4		Total	
	Cbft	Sqm	Cbft	Sqm	Cbft	Sqm	Cbft	Sqm	Cbft	Sqm
UPD			8,815	108.68	8,833	103.40	8,739	103.30	26,387	315.38
A	34,096	363.82	36,070	428.60	37,515	458.29	36,205	441.98	143,886	1,692.69
B	22,703	210.75	33,005	378.17	37,100	437.24	36,090	412.20	128,898	1,438.36
C	12,401	145.35	30,961	367.59	38,387	461.17	32,513	380.99	114,262	1,355.10
D	11,750	141.50	25,941	284.60	35,763	411.94	25,474	254.81	98,928	1,092.85
Total	80,950	861.42	134,792	1,567.64	157,598	1,872.04	139,021	1,593.28	512,361	5,894.38

Hold 1- 4 Legend

Non insulated Deck, air passes through (aka Spar Deck)

Insulated, air tight Deck or Tanktop

Non Insulated, air tight Deck

Hatch sizes

	Hold 1	Hold 2	Hold 3	Hold 4
	l x b	l x b	l x b	l x b
Deck	10.00 x 7.50	12.60 x 8.20	12.60 x 8.20	12.60 x 8.20
UPD		10.00 x 7.50	10.00 x 7.50	10.00 x 7.50
A	10.00 x 7.50	10.00 x 7.50	10.00 x 7.50	10.00 x 7.50
B	10.00 x 7.50	10.00 x 7.50	10.00 x 7.50	10.00 x 7.50
C	7.00 x 4.50	10.00 x 7.50	10.00 x 7.50	10.00 x 7.50



ACONCAGUA BAY

512,361 cbft / 5,894 sqm / 4,845 pallets

Container Carrying Capacity		Max FEU's	Add. TEU's	Max TEU's	Add. FEU's
<u>On Weather Deck and Hatches</u>					
Empty Positions	Standard	19	0	20	0
Max Stackweight	Standard	19	0	20	0
Max Stackweight - Self-sustained	Standard	0	0	0	0
Empty Positions	High Cube	19	0	20	0
Max Stackweight	High Cube	19	0	20	0
<u>Reefer Hold</u>					
Empty Positions	Standard	0	0	0	0
Max Stackweight	Standard	0	0	0	0
Max Stackweight - Self-sustained	Standard	0	0	0	0
Empty Positions	High Cube	0	0	0	0

'Max Stackweight' and 'Max Stackweight - Self-sustained' are the number of laden containers that can be loaded basis the maximum stackweight, calculating 26 mt gross for a laden FEU and 14 mt gross for a laden TEU

Above figures are as per vessel's technical layout. Actual container intake is subject to master's approval and depending on stability, stackweight and visibility.

Standard Voyage Container Carrying Capacity

Nr of High Cube (9.5') Reefers 19
of which Self-sustained 0

'Standard Voyage' = voyage from Panama Canal to Rotterdam, with a full cargo of bananas in the holds and departing with full bunker tanks. Containers on this voyage are considered to weigh 26 mt gross.

Reefer Plugs

Nr. of electrical Reefer Plugs 19

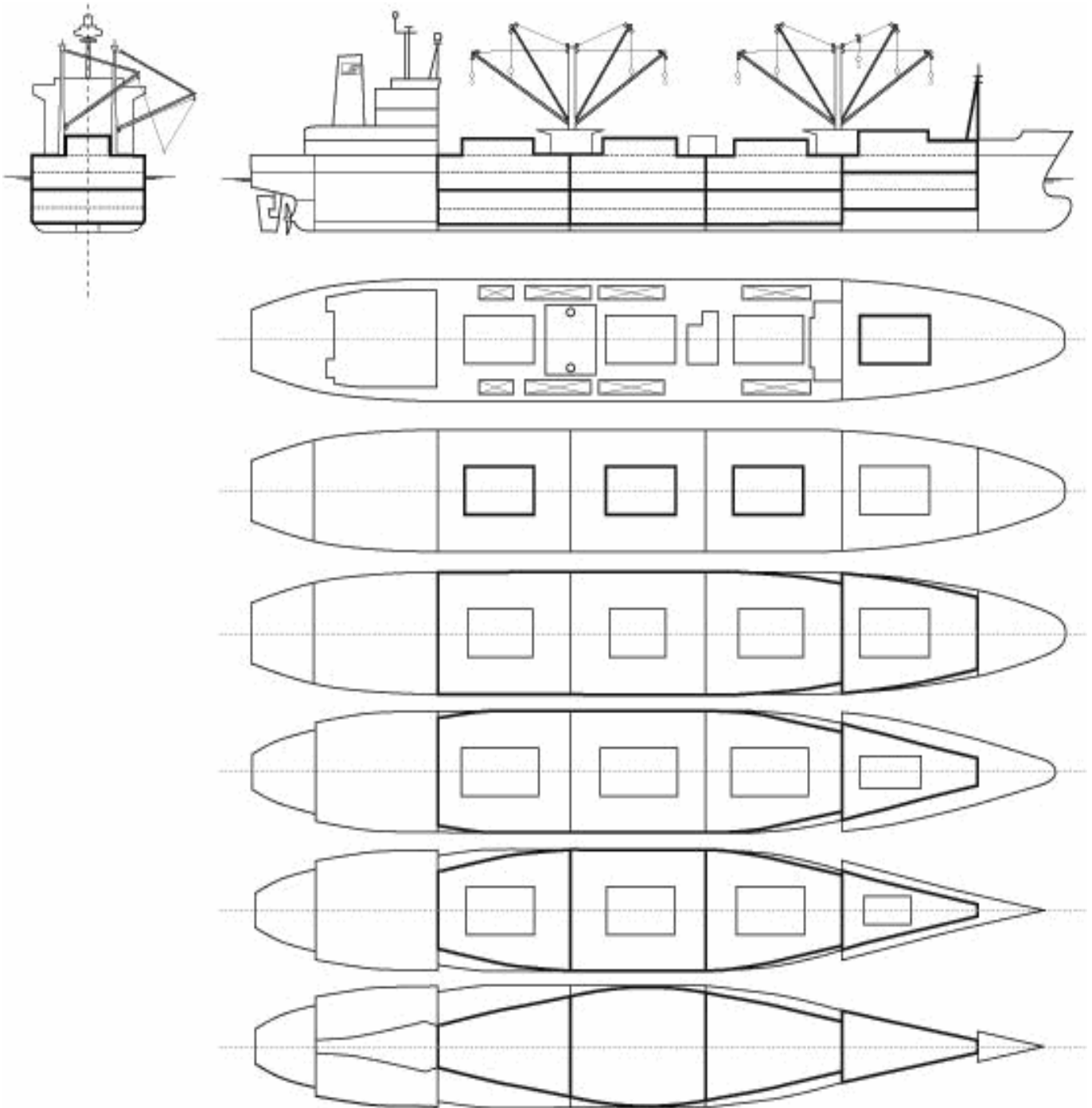
Cargo Gear

8 Derricks x 7.0 mt or 4 x 5.0 mt in Union Purchase



ACONCAGUA BAY

512,361 cbft / 5,894 sqm / 4,845 pallets



General Remarks

- Pallet Intake figures are indication only. The figures are based on a stowage factor of 1.32 pallet/sqm in reefer holds, full load of reefer containers based on the standard voyage with 20 pallets in each container

