

RUNAWAY BAY

516,227 cbft / 5,852 sqm / 4,813 pallets



General

Built	February-1992	International	GT	NT
Flag	Bahamas	Panama Canal	9,070.00	5,838.00
Port of Registry	Nassau	Suez Canal		8,091.00
Callsign	C6FI3			7,884.27
IMO/Lloyds nr	9019640		Draft	DWAT
Length over all [m]	148.50	Tropical		
Beam [m]	20.60	Summer	9.42	11,581
Depth [m]	12.80	Winter		
Bowthruster(s)	-			

Reefer

Holds	4
Hatches	4
Compartments	19
Minimum Deckheight [m]	
Allowable weight of forklift including cargo	maximum 6 mt (Forklift to be equipped with minimum 4 non hard rubber airtyres)
Temperature zones	8
Cooling sections	1A B - 1C D - 2UPD A B - 2C D - 3UPD A B - 3C D - 4UPD A B - 4C D
Temperature range [dC]	-25/+15
Air circulations [/hr]	90
Air renewals [/hr]	4
USDA equipped	Yes, valid until 30-April-2023
Controlled Atmosphere	None
Modified Atmosphere	No equipment on board



RUNAWAY BAY

516,227 cbft / 5,852 sqm / 4,813 pallets

Classification Details

Classification Society	Bureau Veritas (BV)
Main Class symbols	I, +Hull, +Mach
Service Notations	Refrigerated cargo ship
Navigation Notations	Unrestricted Navigation
Additional Class Notations	+REF-CARGO, InWaterSurvey
Machinery	+Mach
Equivalent Finnish/Swedish	
Ice Strengthening	-

Reefer Compartment Capacity Breakdown

	Hold 1		Hold 2		Hold 3		Hold 4		Total	
	Cbft	Sqm	Cbft	Sqm	Cbft	Sqm	Cbft	Sqm	Cbft	Sqm
UPD			8,706	103.89	8,593	103.81	8,251	104.12	25,550	311.82
A	34,068	350.40	35,501	426.61	37,219	453.79	36,030	438.40	142,818	1,669.20
B	22,700	209.54	33,719	377.47	38,627	433.74	36,816	409.17	131,862	1,429.92
C	12,377	142.08	31,079	371.42	38,729	457.31	32,770	377.90	114,955	1,348.71
D	11,890	139.94	27,817	288.24	35,837	409.08	25,498	254.65	101,042	1,091.91
Total	81,035	841.96	136,822	1,567.63	159,005	1,857.73	139,365	1,584.24	516,227	5,851.56

Hold 1- 4 Legend

Non insulated Deck, air passes through (aka Spar Deck)

Insulated, air tight Deck or Tanktop

Non Insulated, air tight Deck

Hatch sizes

	Hold 1	Hold 2	Hold 3	Hold 4
	l x b	l x b	l x b	l x b
Deck	10.00 x 7.50	12.60 x 8.20	12.60 x 8.20	12.60 x 8.20
UPD		10.00 x 7.50	10.00 x 7.50	10.00 x 7.50
A	10.00 x 7.50	10.00 x 7.50	10.00 x 7.50	10.00 x 7.50
B	10.00 x 7.50	10.00 x 7.50	10.00 x 7.50	10.00 x 7.50
C	7.00 x 4.50	10.00 x 7.50	10.00 x 7.50	10.00 x 7.50



RUNAWAY BAY

516,227 cbft / 5,852 sqm / 4,813 pallets

Container Carrying Capacity		Max FEU's	Add. TEU's	Max TEU's	Add. FEU's
<u>On Weather Deck and Hatches</u>					
Empty Positions	Standard	19	0	20	0
Max Stackweight	Standard	19	0	20	0
Max Stackweight - Self-sustained	Standard	0	0	0	0
Empty Positions	High Cube	19	0	20	0
Max Stackweight	High Cube	19	0	20	0
<u>Reefer Hold</u>					
Empty Positions	Standard	0	0	0	0
Max Stackweight	Standard	0	0	0	0
Max Stackweight - Self-sustained	Standard	0	0	0	0
Empty Positions	High Cube	0	0	0	0

'Max Stackweight' and 'Max Stackweight - Self-sustained' are the number of laden containers that can be loaded basis the maximum stackweight, calculating 26 mt gross for a laden FEU and 14 mt gross for a laden TEU

Above figures are as per vessel's technical layout. Actual container intake is subject to master's approval and depending on stability, stackweight and visibility.

Standard Voyage Container Carrying Capacity

Nr of High Cube (9.5') Reefers 19
of which Self-sustained 0

'Standard Voyage' = voyage from Panama Canal to Rotterdam, with a full cargo of bananas in the holds and departing with full bunker tanks. Containers on this voyage are considered to weigh 26 mt gross.

Reefer Plugs

Nr. of electrical Reefer Plugs 29

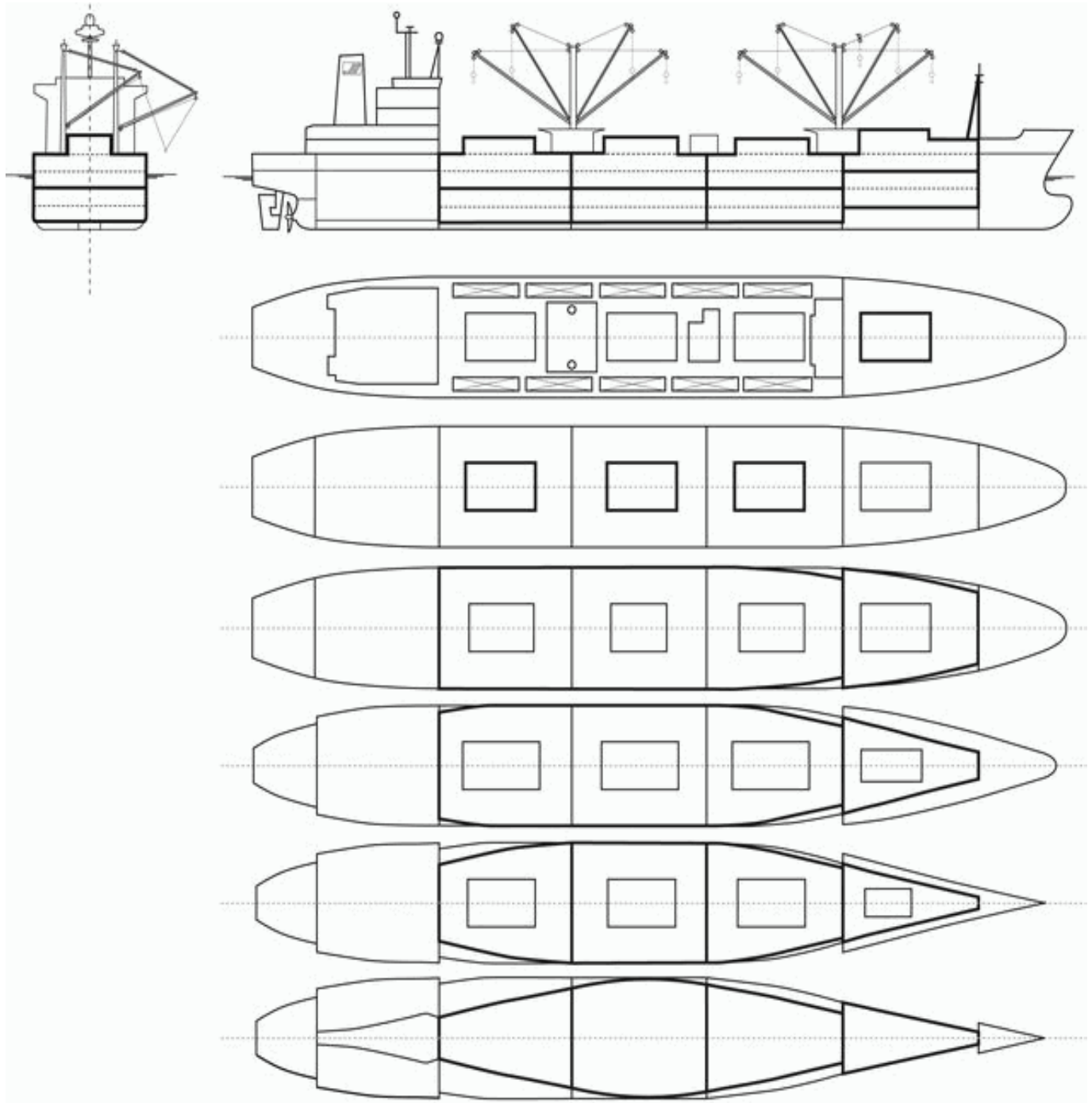
Cargo Gear

8 Derricks x 7.0 mt or 4 x 5.0 mt in Union Purchase



RUNAWAY BAY

516,227 cbft / 5,852 sqm / 4,813 pallets



General Remarks

- Pallet Intake figures are indication only. The figures are based on a stowage factor of 1.32 pallet/sqm in reefer holds, full load of reefer containers based on the standard voyage with 20 pallets in each container

