

# RUNAWAY BAY

516,227 cbft / 5,852 sqm / 4,810 pallets



## General

Built	February-1992	International	<b>GT</b>	<b>NT</b>
Flag	Bahamas	Panama Canal	9,070.00	5,838.00
Port of Registry	Nassau	Suez Canal		8,091.00
Callsign	C6FI3			7,884.27
IMO/Lloyds nr	9019640		<b>Draft</b>	<b>DWAT</b>
Length over all [m]	148.50	Tropical		
Beam [m]	20.60	Summer	9.42	11,581
Depth [m]	12.80	Winter		
Bowthruster(s)	-			

## Reefer

Holds	4
Hatches	4
Compartments	19
Minimum Deckheight [m]	
Allowable weight of forklift including cargo	maximum 6 mt (Forklift to be equipped with minimum 4 non hard rubber airtyres)
Temperature zones	8
Cooling sections	1A B - 1C D - 2UPD A B - 2C D - 3UPD A B - 3C D - 4UPD A B - 4C D
Temperature range [dC]	-25/+15
Air circulations [/hr]	90
Air renewals [/hr]	4
USDA equipped	Yes, valid until 30-April-2023
Controlled Atmosphere	None
Modified Atmosphere	No equipment on board



# RUNAWAY BAY

516,227 cbft / 5,852 sqm / 4,810 pallets

## Classification Details

Classification Society	Bureau Veritas (BV)
Main Class symbols	I, +Hull, +Mach
Service Notations	Refrigerated cargo ship
Navigation Notations	Unrestricted Navigation
Additional Class Notations	+REF-CARGO, InWaterSurvey
Machinery	+Mach
Equivalent Finnish/Swedish	
Ice Strengthening	-

## Reefer Compartment Capacity Breakdown

	Hold 1		Hold 2		Hold 3		Hold 4		Total	
	Cbft	Sqm	Cbft	Sqm	Cbft	Sqm	Cbft	Sqm	Cbft	Sqm
UPD			8,706	103.89	8,593	103.81	8,251	104.12	25,550	311.82
A	34,068	350.40	35,501	426.61	37,219	453.79	36,030	438.40	142,818	1,669.20
B	22,700	209.54	33,719	377.47	38,627	433.74	36,816	409.17	131,862	1,429.92
C	12,377	142.08	31,079	371.42	38,729	457.31	32,770	377.90	114,955	1,348.71
D	11,890	139.94	27,817	288.24	35,837	409.08	25,498	254.65	101,042	1,091.91
<b>Total</b>	<b>81,035</b>	<b>841.96</b>	<b>136,822</b>	<b>1,567.63</b>	<b>159,005</b>	<b>1,857.73</b>	<b>139,365</b>	<b>1,584.24</b>	<b>516,227</b>	<b>5,851.56</b>

Hold 1- 4 Legend

Non insulated Deck, air passes through (aka Spar Deck)

Insulated, air tight Deck or Tanktop

Non Insulated, air tight Deck

## Hatch sizes

	Hold 1	Hold 2	Hold 3	Hold 4
	l x b	l x b	l x b	l x b
Deck	10.00 x 7.50	12.60 x 8.20	12.60 x 8.20	12.60 x 8.20
UPD		10.00 x 7.50	10.00 x 7.50	10.00 x 7.50
A	10.00 x 7.50	10.00 x 7.50	10.00 x 7.50	10.00 x 7.50
B	10.00 x 7.50	10.00 x 7.50	10.00 x 7.50	10.00 x 7.50
C	7.00 x 4.50	10.00 x 7.50	10.00 x 7.50	10.00 x 7.50



# RUNAWAY BAY

516,227 cbft / 5,852 sqm / 4,810 pallets

Container Carrying Capacity		Max FEU's	Add. TEU's	Max TEU's	Add. FEU's
<u>On Weather Deck and Hatches</u>					
Empty Positions	Standard	19	0	20	0
Max Stackweight	Standard	19	0	20	0
Max Stackweight - Self-sustained	Standard	0	0	0	0
Empty Positions	High Cube	19	0	20	0
Max Stackweight	High Cube	19	0	20	0
<u>Reefer Hold</u>					
Empty Positions	Standard	0	0	0	0
Max Stackweight	Standard	0	0	0	0
Max Stackweight - Self-sustained	Standard	0	0	0	0
Empty Positions	High Cube	0	0	0	0

'Max Stackweight' and 'Max Stackweight - Self-sustained' are the number of laden containers that can be loaded basis the maximum stackweight, calculating 26 mt gross for a laden FEU and 14 mt gross for a laden TEU

Above figures are as per vessel's technical layout. Actual container intake is subject to master's approval and depending on stability, stackweight and visibility.

## Standard Voyage Container Carrying Capacity

Nr of High Cube (9.5') Reefers 19  
of which Self-sustained 0

'Standard Voyage' = voyage from Panama Canal to Rotterdam, with a full cargo of bananas in the holds and departing with full bunker tanks. Containers on this voyage are considered to weigh 26 mt gross.

## Reefer Plugs

Nr. of electrical Reefer Plugs 29

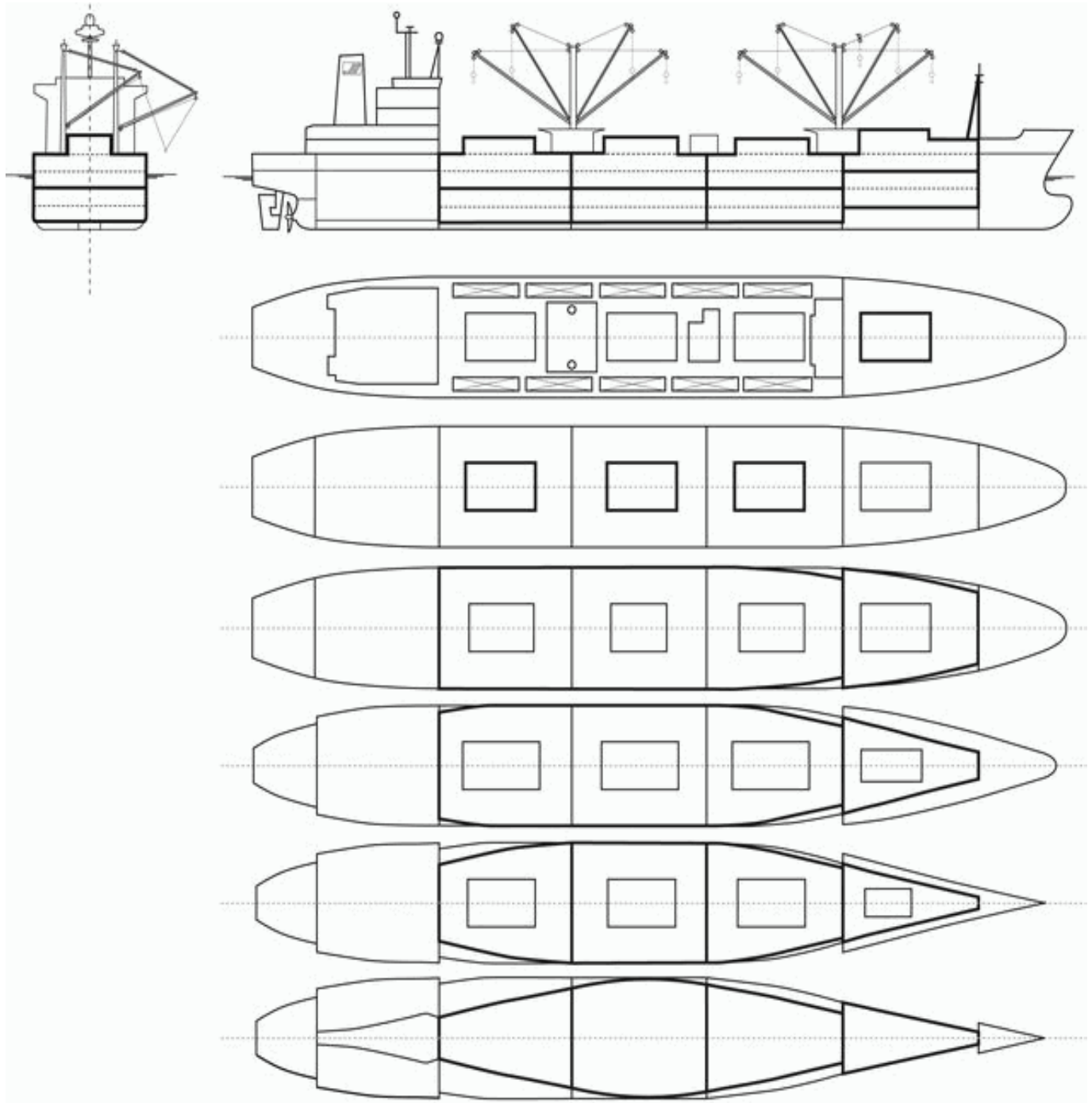
## Cargo Gear

8 Derricks x 7.0 mt or 4 x 5.0 mt in Union Purchase



# RUNAWAY BAY

516,227 cbft / 5,852 sqm / 4,810 pallets



## General Remarks

- Pallet Intake figures are indication only. The figures are based on a stowage factor of 1.32 pallet/sqm in reefer holds, full load of reefer containers based on the standard voyage with 20 pallets in each container

