

# PACIFIC MERMAID

540,572 cbft / 6,075 sqm / 5,740 pallets



## General

Built	February-1992	International	<b>GT</b>	<b>NT</b>
Flag	Liberia	Panama Canal	9,820.00	3,538.00
Port of Registry	Monrovia	Suez Canal		8,653.60
Callsign	A8JJ5			8,902.36
IMO/Lloyds nr	9045924		<b>Draft</b>	<b>DWAT</b>
Length over all [m]	141.80	Tropical	9.16	10,891
Beam [m]	22.80	Summer	8.82	10,461
Depth [m]	13.00	Winter	8.63	10,029
Bowthruster(s)	-			

## Reefer

Holds	4
Hatches	4
Compartments	20
Minimum Deckheight [m]	
Allowable weight of forklift including cargo	maximum 5 mt (Forklift to be equipped with minimum 4 non hard rubber airtyres)
Temperature zones	8
Cooling sections	1UPD A - 1B - 1C - 1D - 2UPD A - 2B - 2C - 2D - 3UPD A - 3B - 3C - 3D - 4UPD A - 4B - 4C - 4D
Temperature range [dC]	
Air circulations [/hr]	90
Air renewals [/hr]	4
USDA equipped	Yes, valid until 30-April-2023
Controlled Atmosphere	CA pre-piped
Modified Atmosphere	No equipment on board



# PACIFIC MERMAID

540,572 cbft / 6,075 sqm / 5,740 pallets

## Classification Details

Classification Society	Bureau Veritas (BV)
Main Class symbols	I, +HULL, +MACH
Service Notations	+Refrigerated cargo ship
Navigation Notations	Unrestricted Navigation
Additional Class Notations	+AUT-UMS, REF-CARGO-AIRCONT, ICE
Machinery	+MACH
Equivalent Finnish/Swedish	
Ice Strengthening	-

## Reefer Compartment Capacity Breakdown

	Hold 1		Hold 2		Hold 3		Hold 4		Total	
	Cbft	Sqm	Cbft	Sqm	Cbft	Sqm	Cbft	Sqm	Cbft	Sqm
UPD	6,938	68.79	6,862	68.79	6,862	68.79	6,862	68.79	27,524	275.16
A	37,211	416.21	35,358	417.64	35,598	425.55	39,718	474.80	147,885	1,734.20
B	31,028	306.03	34,353	401.47	35,770	428.89	39,910	475.15	141,061	1,611.54
C	20,420	213.32	32,628	355.17	35,661	426.56	33,663	383.09	122,372	1,378.14
D	14,864	161.26	25,573	269.39	34,006	378.02	27,287	266.97	101,730	1,075.64
<b>Total</b>	<b>110,461</b>	<b>1,165.61</b>	<b>134,774</b>	<b>1,512.46</b>	<b>147,897</b>	<b>1,727.81</b>	<b>147,440</b>	<b>1,668.80</b>	<b>540,572</b>	<b>6,074.68</b>

Hold 1-4 Legend

Non insulated Deck, air passes through (aka Spar Deck)

Insulated, air tight Deck or Tanktop

Non Insulated, air tight Deck

## Hatch sizes

	Hold 1	Hold 2	Hold 3	Hold 4
	l x b	l x b	l x b	l x b
Deck	7.60 x 7.10	7.60 x 7.10	7.60 x 7.10	7.60 x 7.10
UPD	7.65 x 7.19	7.65 x 7.19	7.65 x 7.19	7.65 x 7.19
A	7.64 x 6.90	7.64 x 6.90	7.64 x 6.90	7.64 x 6.90
B	7.63 x 6.90	7.64 x 6.90	7.64 x 6.90	7.64 x 6.90
C	7.64 x 4.20	7.64 x 6.90	7.64 x 6.90	7.64 x 6.90



# PACIFIC MERMAID

540,572 cbft / 6,075 sqm / 5,740 pallets

Container Carrying Capacity		Max FEU's	Add. TEU's	Max TEU's	Add. FEU's
<u>On Weather Deck and Hatches</u>					
Empty Positions	Standard	73	0	140	13
Max Stackweight	Standard	65	0	80	9
Max Stackweight - Self-sustained	Standard	65	0	80	9
Empty Positions	High Cube	73	0	80	9
Max Stackweight	High Cube	57	0	80	9
Max Stackweight - Self-sustained	High Cube	57	0	80	9
<u>Reefer Hold</u>					
Empty Positions	Standard	0	0	0	0
Max Stackweight	Standard	0	0	0	0
Max Stackweight - Self-sustained	Standard	0	0	0	0

'Max Stackweight' and 'Max Stackweight - Self-sustained' are the number of laden containers that can be loaded basis the maximum stackweight, calculating 26 mt gross for a laden FEU and 14 mt gross for a laden TEU

Above figures are as per vessel's technical layout. Actual container intake is subject to master's approval and depending on stability, stackweight and visibility.

## Standard Voyage Container Carrying Capacity

Nr of High Cube (9.5') Reefers 57  
of which Self-sustained 57

'Standard Voyage' = voyage from Panama Canal to Rotterdam, with a full cargo of bananas in the holds and departing with full bunker tanks. Containers on this voyage are considered to weigh 26 mt gross.

## Reefer Plugs

Nr. of electrical Reefer Plugs 65

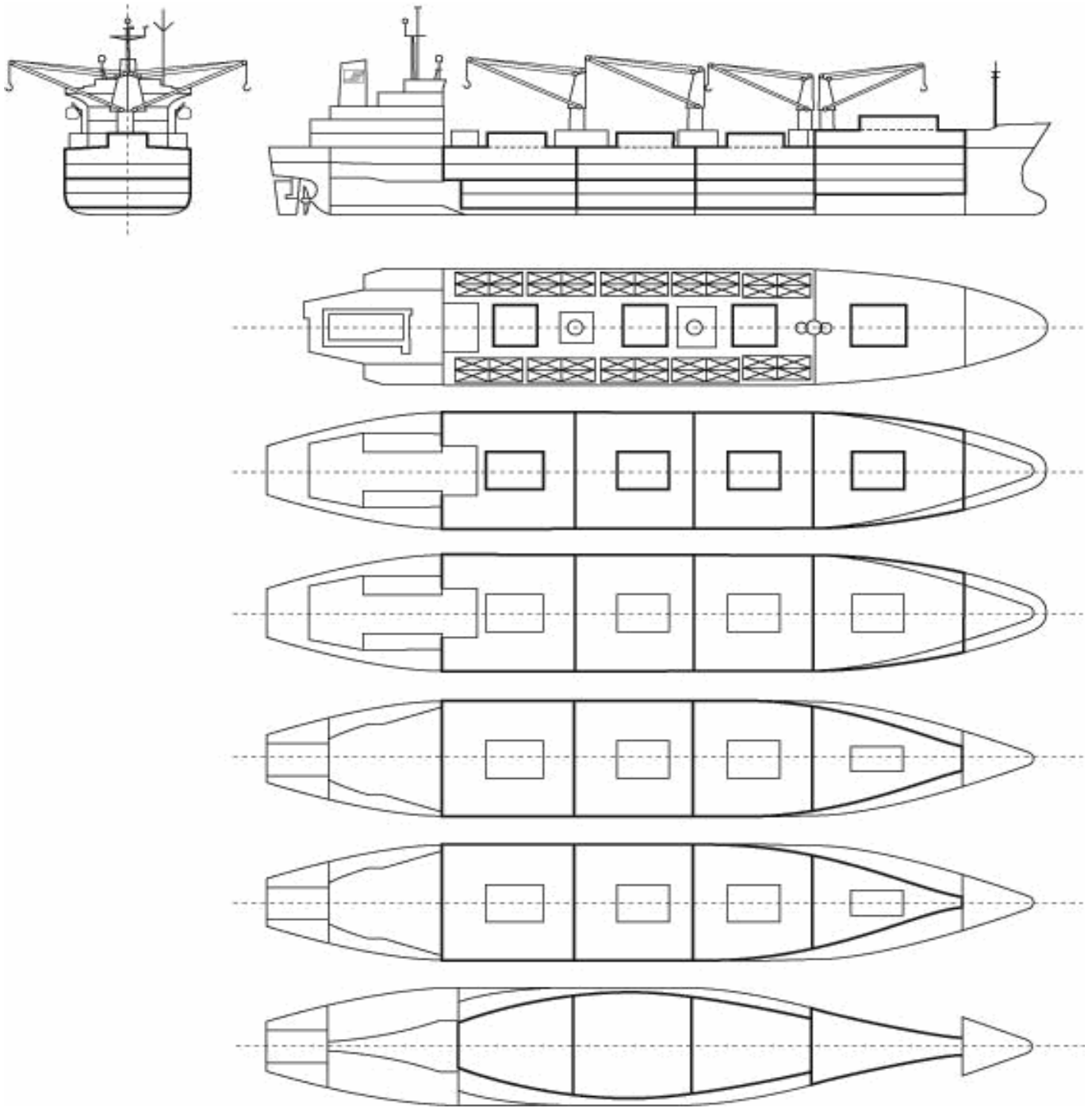
## Cargo Gear

2 Cranes x 30.0 mt  
2 Cranes x 10.0 mt



# PACIFIC MERMAID

540,572 cbft / 6,075 sqm / 5,740 pallets



## General Remarks

- Pallet Intake figures are indication only. The figures are based on a stowage factor of 1.32 pallet/sqm in reefer holds, full load of reefer containers based on the standard voyage with 20 pallets in each container

