

LOMBOK STRAIT

626,011 cbft / 7,341 sqm / 9,681 pallets



General

Built	August-2002	International	GT	NT
Flag	Liberia	Panama Canal	14,413.00	7,536.00
Port of Registry	Monrovia	Suez Canal		12,563.00
Callsign	D5WC6			12,848.00
IMO/Lloyds nr	9204958		Draft	DWAT
Length over all [m]	167.00	Tropical		
Beam [m]	25.00	Summer	10.00	15,917
Depth [m]	13.40	Winter		
Bowthruster(s)	1 x 770kW			

Reefer

Holds	4
Hatches	4
Compartments	15
Minimum Deckheight [m]	
Allowable weight of forklift including cargo	maximum 5 mt (Forklift to be equipped with minimum 4 non hard rubber airtyres)
Temperature zones	8
Cooling sections	1FC - 1A - 1B - 2A - 2B - 2C - 2D - 3A - 3B - 3C - 3D - 4A - 4B - 4C - 4D
Temperature range [dC]	
Air circulations [/hr]	90
Air renewals [/hr]	2
USDA equipped	Yes, certificate expired
Controlled Atmosphere	Fully CA fitted, including own CA plant
Modified Atmosphere	Yes, ship owned MA plant



LOMBOK STRAIT

626,011 cbft / 7,341 sqm / 9,681 pallets

Classification Details

Classification Society	Bureau Veritas (BV)
Main Class symbols	I
Service Notations	+Container ship, Refrigerated cargo ship
Navigation Notations	Unrestricted Navigation
Additional Class Notations	Ice III, +AUT-UMS, +SYS-NEQ-1, MON-SHAFT, +REF-CARGO-AIRCONT, INWATERSURVEY
Machinery	+MACH
Equivalent Finnish/Swedish	
Ice Strengthening	-

Reefer Compartment Capacity Breakdown

	Hold 1		Hold 2		Hold 3		Hold 4		Total	
	Cbft	Sqm	Cbft	Sqm	Cbft	Sqm	Cbft	Sqm	Cbft	Sqm
FC	47,441	554.66							47,441	554.66
A	27,797	327.69	52,133	614.60	57,199	674.30	48,589	572.80	185,718	2,189.39
B	14,693	174.08	45,853	543.29	56,447	669.44	48,239	571.54	165,232	1,958.35
C			38,542	441.33	57,100	653.28	43,309	495.91	138,951	1,590.52
D			24,048	284.19	42,221	498.98	22,400	264.46	88,669	1,047.63
Total	89,931	1,056.43	160,576	1,883.41	212,967	2,496.00	162,537	1,904.71	626,011	7,340.55

Hold 1-4 Legend

Non insulated Deck, air passes through (aka Spar Deck)

Insulated, air tight Deck or Tanktop

Non Insulated, air tight Deck

Hatch sizes

	Hold 1	Hold 2	Hold 3	Hold 4
	l x b	l x b	l x b	l x b
Deck	3.30 x 6.00	3.30 x 6.00	3.30 x 6.00	3.30 x 6.00
FC	3.30 x 6.00	-		
A	3.30 x 6.00	3.30 x 6.00	3.30 x 6.00	3.30 x 6.00
B		3.30 x 6.00	3.30 x 6.00	3.30 x 6.00
C		3.30 x 6.00	3.30 x 6.00	3.30 x 6.00



LOMBOK STRAIT

626,011 cbft / 7,341 sqm / 9,681 pallets

Container Carrying Capacity		Max FEU's	Add. TEU's	Max TEU's	Add. FEU's
<u>On Weather Deck and Hatches</u>					
Empty Positions	Standard	220	0	440	0
Max Stackweight	Standard	206	0	440	0
Max Stackweight - Self-sustained	Standard	206	0	440	0
Empty Positions	High Cube	220	0	440	0
Max Stackweight	High Cube	206	0	440	0
Max Stackweight - Self-sustained	High Cube	206	0	440	0
<u>Reefer Hold</u>					
Empty Positions	Standard	0	0	0	0
Max Stackweight	Standard	0	0	0	0
Max Stackweight - Self-sustained	Standard	0	0	0	0
Empty Positions	High Cube	0	0	0	0
Max Stackweight - Self-sustained	High Cube	0	0	0	0

'Max Stackweight' and 'Max Stackweight - Self-sustained' are the number of laden containers that can be loaded basis the maximum stackweight, calculating 26 mt gross for a laden FEU and 14 mt gross for a laden TEU

Above figures are as per vessel's technical layout. Actual container intake is subject to master's approval and depending on stability, stackweight and visibility.

Standard Voyage Container Carrying Capacity

Nr of High Cube (9.5') Reefers 206
of which Self-sustained 206

'Standard Voyage' = voyage from Panama Canal to Rotterdam, with a full cargo of bananas in the holds and departing with full bunker tanks. Containers on this voyage are considered to weigh 26 mt gross.

Reefer Plugs

Nr. of electrical Reefer Plugs 206

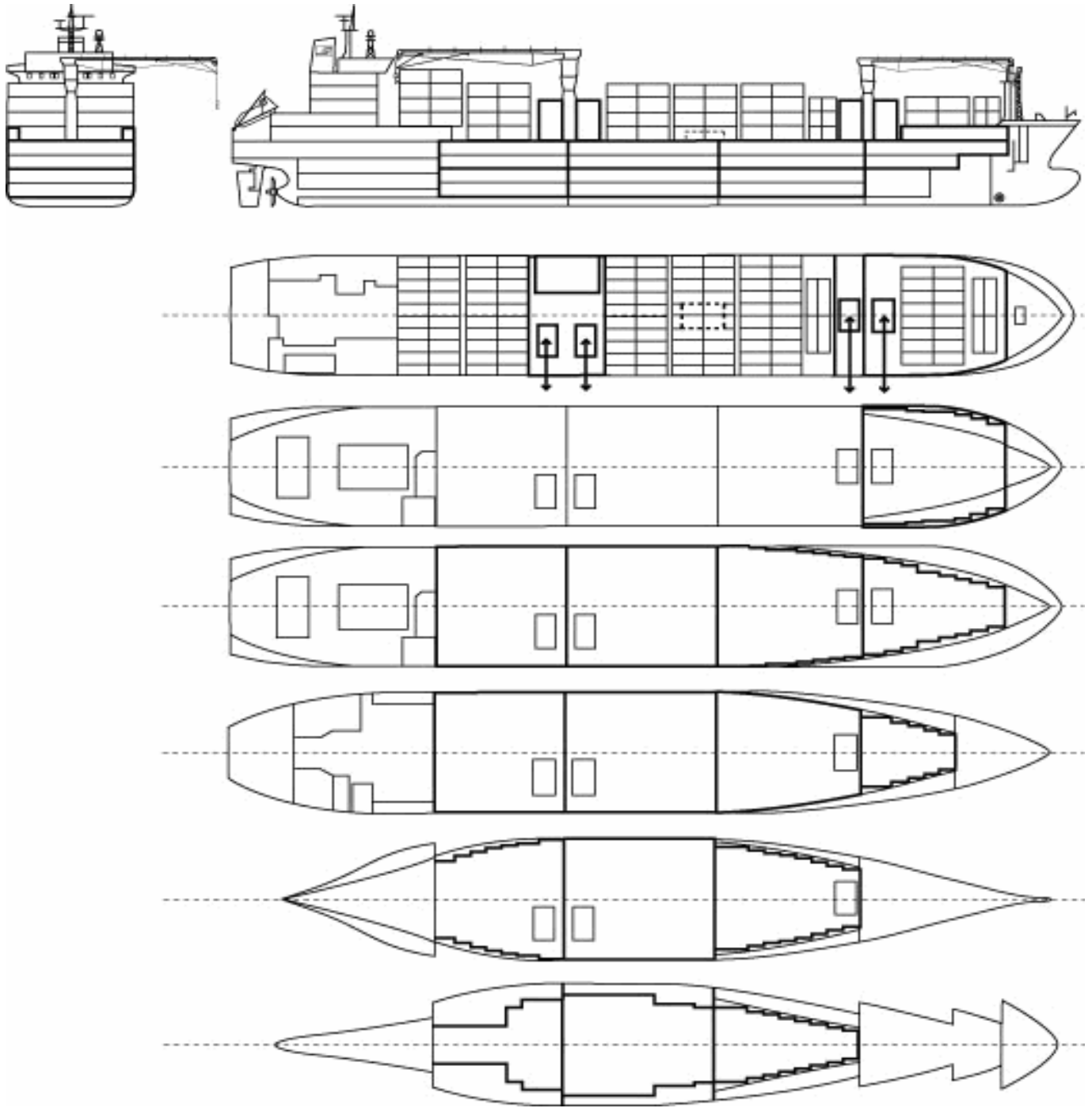
Cargo Gear

2 Cranes x 45.0 mt
4 Sideloaders x 12.5 mt
1 Container spreader 40ft x 0.0 mt
1 Container spreader 20ft x 0.0 mt



LOMBOK STRAIT

626,011 cbft / 7,341 sqm / 9,681 pallets



General Remarks

- Pallet Intake figures are indication only. The figures are based on a stowage factor of 1.32 pallet/sqm in reefer holds, full load of reefer containers based on the standard voyage with 20 pallets in each container

