

# FEGULUS

526,141 cbft / 5,849 sqm / 5,351 pallets



## General

Built	June-1993	International	<b>GT</b>	<b>NT</b>
Flag	Bahamas	Panama Canal	10,374.00	5,253.00
Port of Registry	Nassau	Suez Canal		8,516.00
Callsign	C6DD4			8,529.13
IMO/Lloyds nr	9055709		<b>Draft</b>	<b>DWAT</b>
Length over all [m]	150.01	Tropical	9.26	10,991
Beam [m]	22.50	Summer	9.07	10,545
Depth [m]	13.20	Winter	8.88	10,104
Bowthruster(s)	-			

## Reefer

Holds	4
Hatches	4
Compartments	15
Minimum Deckheight [m]	
Allowable weight of forklift including cargo	maximum 5 mt (Forklift to be equipped with minimum 4 non hard rubber airtyres)
Temperature zones	8
Cooling sections	1FC - 1A - 1B - 2A - 2B - 2C - 2D - 3A - 3B - 3C - 3D - 4A - 4B - 4C - 4D
Temperature range [dC]	- 30/+13 DC
Air circulations [/hr]	90
Air renewals [/hr]	3
USDA equipped	Yes, valid until 30-April-2023
Controlled Atmosphere	CA pre-piped
Modified Atmosphere	No equipment on board



# FEGULUS

526,141 cbft / 5,849 sqm / 5,351 pallets

## Classification Details

Classification Society	Bureau Veritas (BV)
Main Class symbols	NS*(Eq CV)/MNS*
Service Notations	RMC*.CA(-30/32 eqF for ACh), CHG, MPP, LSA, RCF, AFS
Navigation Notations	-
Additional Class Notations	-
Machinery	
Equivalent Finnish/Swedish	
Ice Strengthening	-

## Reefer Compartment Capacity Breakdown

	Hold 1		Hold 2		Hold 3		Hold 4		Total	
	Cbft	Sqm	Cbft	Sqm	Cbft	Sqm	Cbft	Sqm	Cbft	Sqm
FC	38,907	375.00							38,907	375.00
A	26,754	261.00	42,960	440.00	43,960	459.00	45,524	462.00	159,198	1,622.00
B	16,994	178.00	35,333	419.00	38,631	462.00	37,360	444.00	128,318	1,503.00
C			31,582	379.00	38,254	461.00	34,842	413.00	104,678	1,253.00
D			27,744	314.00	36,438	434.00	30,858	348.00	95,040	1,096.00
<b>Total</b>	<b>82,655</b>	<b>814.00</b>	<b>137,619</b>	<b>1,552.00</b>	<b>157,283</b>	<b>1,816.00</b>	<b>148,584</b>	<b>1,667.00</b>	<b>526,141</b>	<b>5,849.00</b>

Hold 1-4 Legend

Non insulated Deck, air passes through (aka Spar Deck)

Insulated, air tight Deck or Tanktop

Non Insulated, air tight Deck

## Hatch sizes

	Hold 1	Hold 2	Hold 3	Hold 4
	l x b	l x b	l x b	l x b
Deck	13.20 x 8.90	13.20 x 10.50	13.20 x 10.50	13.20 x 10.50
FC	13.00 x 10.30	-		
A	9.80 x 6.50	13.00 x 10.30	13.00 x 10.30	13.00 x 10.30
B		-	13.00 x 10.30	13.00 x 10.30
C		13.00 x 10.30	13.00 x 10.30	13.00 x 10.30



# FEGULUS

526,141 cbft / 5,849 sqm / 5,351 pallets

Container Carrying Capacity		Max FEU's	Add. TEU's	Max TEU's	Add. FEU's
<u>On Weather Deck and Hatches</u>					
Empty Positions	Standard	67	0	154	0
Max Stackweight	Standard	46	0	92	0
Max Stackweight - Selfsustained	Standard	46	0	92	0
Empty Positions	High Cube	67	0	154	0
Max Stackweight	High Cube	46	0	92	0
Max Stackweight - Selfsustained	High Cube	46	0	92	0
<u>Reefer Hold</u>					
Empty Positions	Standard	54	0	108	0
Max Stackweight	Standard	54	0	108	0
Max Stackweight - Selfsustained	Standard	54	0	108	0
Empty Positions	High Cube	54	0	108	0
Max Stackweight - Selfsustained	High Cube	54	0	108	0

'Max Stackweight' and 'Max Stackweight - Selfsustained' are the number of laden containers that can be loaded basis the maximum stackweight, calculating 26 mt gross for a laden FEU and 14 mt gross for a laden TEU

Above figures are as per vessel's technical layout. Actual container intake is subject to master's approval and depending on stability, stackweight and visibility.

## Standard Voyage Container Carrying Capacity

Nr of High Cube (9.5') Reefers 46  
of which Selfsustained 46

'Standard Voyage' = voyage from Panama Canal to Rotterdam, with a full cargo of bananas in the holds and departing with full bunker tanks. Containers on this voyage are considered to weigh 26 mt gross.

## Reefer Plugs

Nr. of electrical Reefer Plugs 46

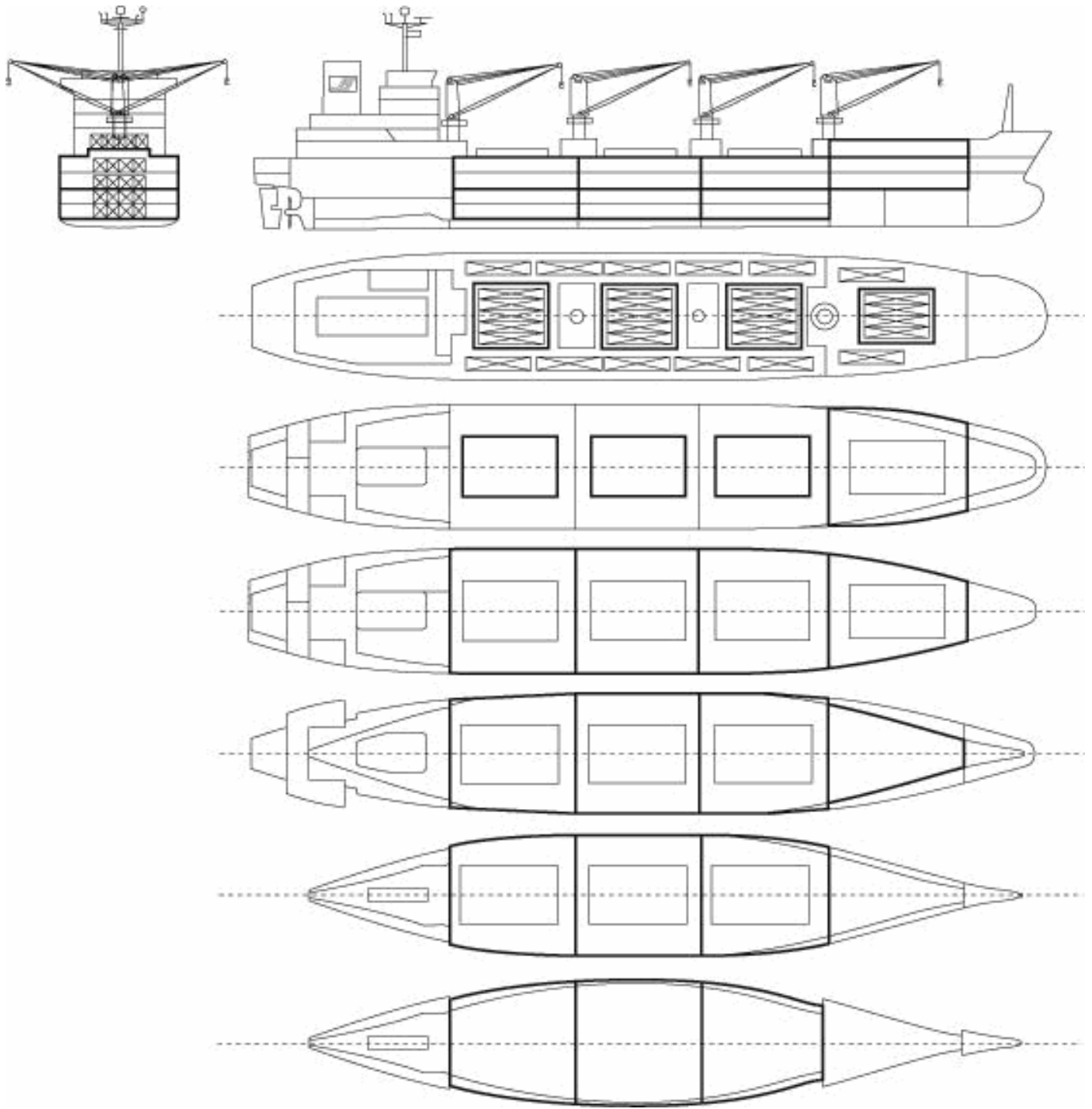
## Cargo Gear

2 Cranes x 36.0 mt  
2 Cranes x 8.0 mt



# FEGULUS

526,141 cbft / 5,849 sqm / 5,351 pallets



## General Remarks

- Pallet Intake figures are indication only. The figures are based on a stowage factor of 1.32 pallet/sqm in reefer holds, full load of reefer containers based on the standard voyage with 20 pallets in each container

