

# FEGULUS

526,141 cbft / 5,849 sqm / 5,350 pallets



## General

|                     |           |               |                        |                       |
|---------------------|-----------|---------------|------------------------|-----------------------|
| Built               | June-1993 | International | <b>GT</b><br>10,374.00 | <b>NT</b><br>5,253.00 |
| Flag                | Bahamas   | Panama Canal  |                        | 8,516.00              |
| Port of Registry    | Nassau    | Suez Canal    |                        | 8,529.13              |
| Callsign            | C6DD4     |               |                        |                       |
| IMO/Lloyds nr       | 9055709   |               | <b>Draft</b>           | <b>DWAT</b>           |
| Length over all [m] | 150.01    | Tropical      | 9.26                   | 10,991                |
| Beam [m]            | 22.50     | Summer        | 9.07                   | 10,545                |
| Depth [m]           | 13.20     | Winter        | 8.88                   | 10,104                |
| Bowthruster(s)      | -         |               |                        |                       |

## Reefer

|  |  |
|--|--|
| Holds  | 4  |
| Hatches                                      | 4  |
| Compartments                                 | 15   |
| Minimum Deckheight [m]                       |  |
| Allowable weight of forklift including cargo | maximum 5 mt (Forklift to be equipped with minimum 4 non hard rubber airtyres) |
| Temperature zones                            | 8  |
| Cooling sections                             | 1FC - 1A - 1B - 2A - 2B - 2C - 2D - 3A - 3B - 3C - 3D - 4A - 4B - 4C - 4D      |
| Temperature range [dC]                       | - 30/+13 DC  |
| Air circulations [/hr]                       | 90   |
| Air renewals [/hr]                           | 3  |
| USDA equipped                                | Yes, valid until 30-April-2023   |
| Controlled Atmosphere                        | CA pre-piped   |
| Modified Atmosphere                          | No equipment on board  |



# FEGULUS

526,141 cbft / 5,849 sqm / 5,350 pallets

## Classification Details

|                            |  |
|----------------------------|--|
| Classification Society     | Bureau Veritas (BV)                                  |
| Main Class symbols         | NS*(Eq CV)/MNS*                                      |
| Service Notations          | RMC*.CA(-30/32 eqF for ACh), CHG, MPP, LSA, RCF, AFS |
| Navigation Notations       | -  |
| Additional Class Notations | -  |
| Machinery                  |  |
| Equivalent Finnish/Swedish |  |
| Ice Strengthening          | -  |

## Reefer Compartment Capacity Breakdown

|              | Hold 1        |               | Hold 2         |                 | Hold 3         |                 | Hold 4         |                 | Total          |                 |
|--------------|---------------|---------------|----------------|-----------------|----------------|-----------------|----------------|-----------------|----------------|-----------------|
|              | Cbft          | Sqm           | Cbft           | Sqm             | Cbft           | Sqm             | Cbft           | Sqm             | Cbft           | Sqm             |
| FC           | 38,907        | 375.00        |                |                 |                |                 |                |                 | 38,907         | 375.00          |
| A            | 26,754        | 261.00        | 42,960         | 440.00          | 43,960         | 459.00          | 45,524         | 462.00          | 159,198        | 1,622.00        |
| B            | 16,994        | 178.00        | 35,333         | 419.00          | 38,631         | 462.00          | 37,360         | 444.00          | 128,318        | 1,503.00        |
| C            |               |               | 31,582         | 379.00          | 38,254         | 461.00          | 34,842         | 413.00          | 104,678        | 1,253.00        |
| D            |               |               | 27,744         | 314.00          | 36,438         | 434.00          | 30,858         | 348.00          | 95,040         | 1,096.00        |
| <b>Total</b> | <b>82,655</b> | <b>814.00</b> | <b>137,619</b> | <b>1,552.00</b> | <b>157,283</b> | <b>1,816.00</b> | <b>148,584</b> | <b>1,667.00</b> | <b>526,141</b> | <b>5,849.00</b> |

Hold 1-4 Legend

Non insulated Deck, air passes through (aka Spar Deck)

Insulated, air tight Deck or Tanktop

Non Insulated, air tight Deck

## Hatch sizes

|      | Hold 1        | Hold 2        | Hold 3        | Hold 4        |
|------|---------------|---------------|---------------|---------------|
|      | l x b         | l x b         | l x b         | l x b         |
| Deck | 13.20 x 8.90  | 13.20 x 10.50 | 13.20 x 10.50 | 13.20 x 10.50 |
| FC   | 13.00 x 10.30 | -             |               |               |
| A    | 9.80 x 6.50   | 13.00 x 10.30 | 13.00 x 10.30 | 13.00 x 10.30 |
| B    |               | -             | 13.00 x 10.30 | 13.00 x 10.30 |
| C    |               | 13.00 x 10.30 | 13.00 x 10.30 | 13.00 x 10.30 |



# FEGULUS

526,141 cbft / 5,849 sqm / 5,350 pallets

| Container Carrying Capacity        |           | Max FEU's | Add. TEU's | Max TEU's | Add. FEU's |
|------------------------------------|-----------|-----------|------------|-----------|------------|
| <u>On Weather Deck and Hatches</u> |           |           |            |           |            |
| Empty Positions                    | Standard  | 67        | 0          | 154       | 0          |
| Max Stackweight                    | Standard  | 46        | 0          | 92        | 0          |
| Max Stackweight - Self-sustained   | Standard  | 46        | 0          | 92        | 0          |
| Empty Positions                    | High Cube | 67        | 0          | 154       | 0          |
| Max Stackweight                    | High Cube | 46        | 0          | 92        | 0          |
| Max Stackweight - Self-sustained   | High Cube | 46        | 0          | 92        | 0          |
| <u>Reefer Hold</u>                 |           |           |            |           |            |
| Empty Positions                    | Standard  | 54        | 0          | 108       | 0          |
| Max Stackweight                    | Standard  | 54        | 0          | 108       | 0          |
| Max Stackweight - Self-sustained   | Standard  | 54        | 0          | 108       | 0          |
| Empty Positions                    | High Cube | 54        | 0          | 108       | 0          |
| Max Stackweight - Self-sustained   | High Cube | 54        | 0          | 108       | 0          |

'Max Stackweight' and 'Max Stackweight - Self-sustained' are the number of laden containers that can be loaded basis the maximum stackweight, calculating 26 mt gross for a laden FEU and 14 mt gross for a laden TEU

Above figures are as per vessel's technical layout. Actual container intake is subject to master's approval and depending on stability, stackweight and visibility.

## Standard Voyage Container Carrying Capacity

Nr of High Cube (9.5') Reefers 46  
of which Self-sustained 46

'Standard Voyage' = voyage from Panama Canal to Rotterdam, with a full cargo of bananas in the holds and departing with full bunker tanks. Containers on this voyage are considered to weigh 26 mt gross.

## Reefer Plugs

Nr. of electrical Reefer Plugs 46

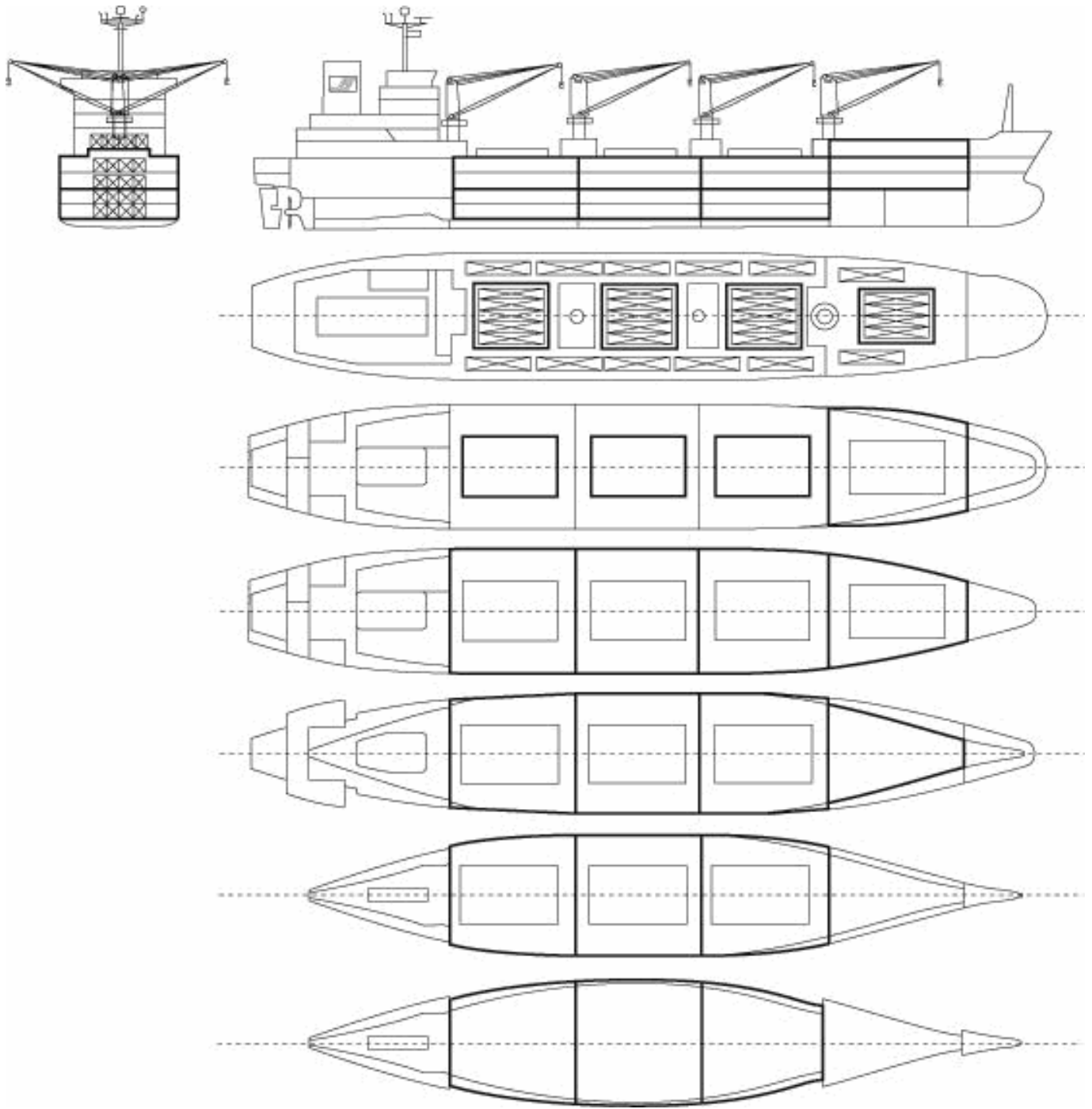
## Cargo Gear

2 Cranes x 36.0 mt  
2 Cranes x 8.0 mt



# FEGULUS

526,141 cbft / 5,849 sqm / 5,350 pallets



## General Remarks

- Pallet Intake figures are indication only. The figures are based on a stowage factor of 1.32 pallet/sqm in reefer holds, full load of reefer containers based on the standard voyage with 20 pallets in each container

