

FEGULUS

526,141 cbft / 5,849 sqm / 5,350 pallets



General

Built	June-1993	International	GT 10,374.00	NT 5,253.00
Flag	Bahamas	Panama Canal		8,516.00
Port of Registry	Nassau	Suez Canal		8,529.13
Callsign	C6DD4			
IMO/Lloyds nr	9055709		Draft	DWAT
Length over all [m]	150.01	Tropical	9.26	10,991
Beam [m]	22.50	Summer	9.07	10,545
Depth [m]	13.20	Winter	8.88	10,104
Bowthruster(s)	-			

Reefer

Holds	4
Hatches	4
Compartments	15
Minimum Deckheight [m]	
Allowable weight of forklift including cargo	maximum 5 mt (Forklift to be equipped with minimum 4 non hard rubber airtyres)
Temperature zones	8
Cooling sections	1FC - 1A - 1B - 2A - 2B - 2C - 2D - 3A - 3B - 3C - 3D - 4A - 4B - 4C - 4D
Temperature range [dC]	- 30/+13 DC
Air circulations [/hr]	90
Air renewals [/hr]	3
USDA equipped	Yes, valid until 30-April-2023
Controlled Atmosphere	CA pre-piped
Modified Atmosphere	No equipment on board



FEGULUS

526,141 cbft / 5,849 sqm / 5,350 pallets

Classification Details

Classification Society	Bureau Veritas (BV)
Main Class symbols	NS*(Eq CV)/MNS*
Service Notations	RMC*.CA(-30/32 eqF for ACh), CHG, MPP, LSA, RCF, AFS
Navigation Notations	-
Additional Class Notations	-
Machinery	
Equivalent Finnish/Swedish	
Ice Strengthening	-

Reefer Compartment Capacity Breakdown

	Hold 1		Hold 2		Hold 3		Hold 4		Total	
	Cbft	Sqm	Cbft	Sqm	Cbft	Sqm	Cbft	Sqm	Cbft	Sqm
FC	38,907	375.00							38,907	375.00
A	26,754	261.00	42,960	440.00	43,960	459.00	45,524	462.00	159,198	1,622.00
B	16,994	178.00	35,333	419.00	38,631	462.00	37,360	444.00	128,318	1,503.00
C			31,582	379.00	38,254	461.00	34,842	413.00	104,678	1,253.00
D			27,744	314.00	36,438	434.00	30,858	348.00	95,040	1,096.00
Total	82,655	814.00	137,619	1,552.00	157,283	1,816.00	148,584	1,667.00	526,141	5,849.00

Hold 1-4 Legend

Non insulated Deck, air passes through (aka Spar Deck)

Insulated, air tight Deck or Tanktop

Non Insulated, air tight Deck

Hatch sizes

	Hold 1	Hold 2	Hold 3	Hold 4
	l x b	l x b	l x b	l x b
Deck	13.20 x 8.90	13.20 x 10.50	13.20 x 10.50	13.20 x 10.50
FC	13.00 x 10.30	-		
A	9.80 x 6.50	13.00 x 10.30	13.00 x 10.30	13.00 x 10.30
B		-	13.00 x 10.30	13.00 x 10.30
C		13.00 x 10.30	13.00 x 10.30	13.00 x 10.30



FEGULUS

526,141 cbft / 5,849 sqm / 5,350 pallets

Container Carrying Capacity		Max FEU's	Add. TEU's	Max TEU's	Add. FEU's
<u>On Weather Deck and Hatches</u>					
Empty Positions	Standard	67	0	154	0
Max Stackweight	Standard	46	0	92	0
Max Stackweight - Self-sustained	Standard	46	0	92	0
Empty Positions	High Cube	67	0	154	0
Max Stackweight	High Cube	46	0	92	0
Max Stackweight - Self-sustained	High Cube	46	0	92	0
<u>Reefer Hold</u>					
Empty Positions	Standard	54	0	108	0
Max Stackweight	Standard	54	0	108	0
Max Stackweight - Self-sustained	Standard	54	0	108	0
Empty Positions	High Cube	54	0	108	0
Max Stackweight - Self-sustained	High Cube	54	0	108	0

'Max Stackweight' and 'Max Stackweight - Self-sustained' are the number of laden containers that can be loaded basis the maximum stackweight, calculating 26 mt gross for a laden FEU and 14 mt gross for a laden TEU

Above figures are as per vessel's technical layout. Actual container intake is subject to master's approval and depending on stability, stackweight and visibility.

Standard Voyage Container Carrying Capacity

Nr of High Cube (9.5') Reefers 46
of which Self-sustained 46

'Standard Voyage' = voyage from Panama Canal to Rotterdam, with a full cargo of bananas in the holds and departing with full bunker tanks. Containers on this voyage are considered to weigh 26 mt gross.

Reefer Plugs

Nr. of electrical Reefer Plugs 46

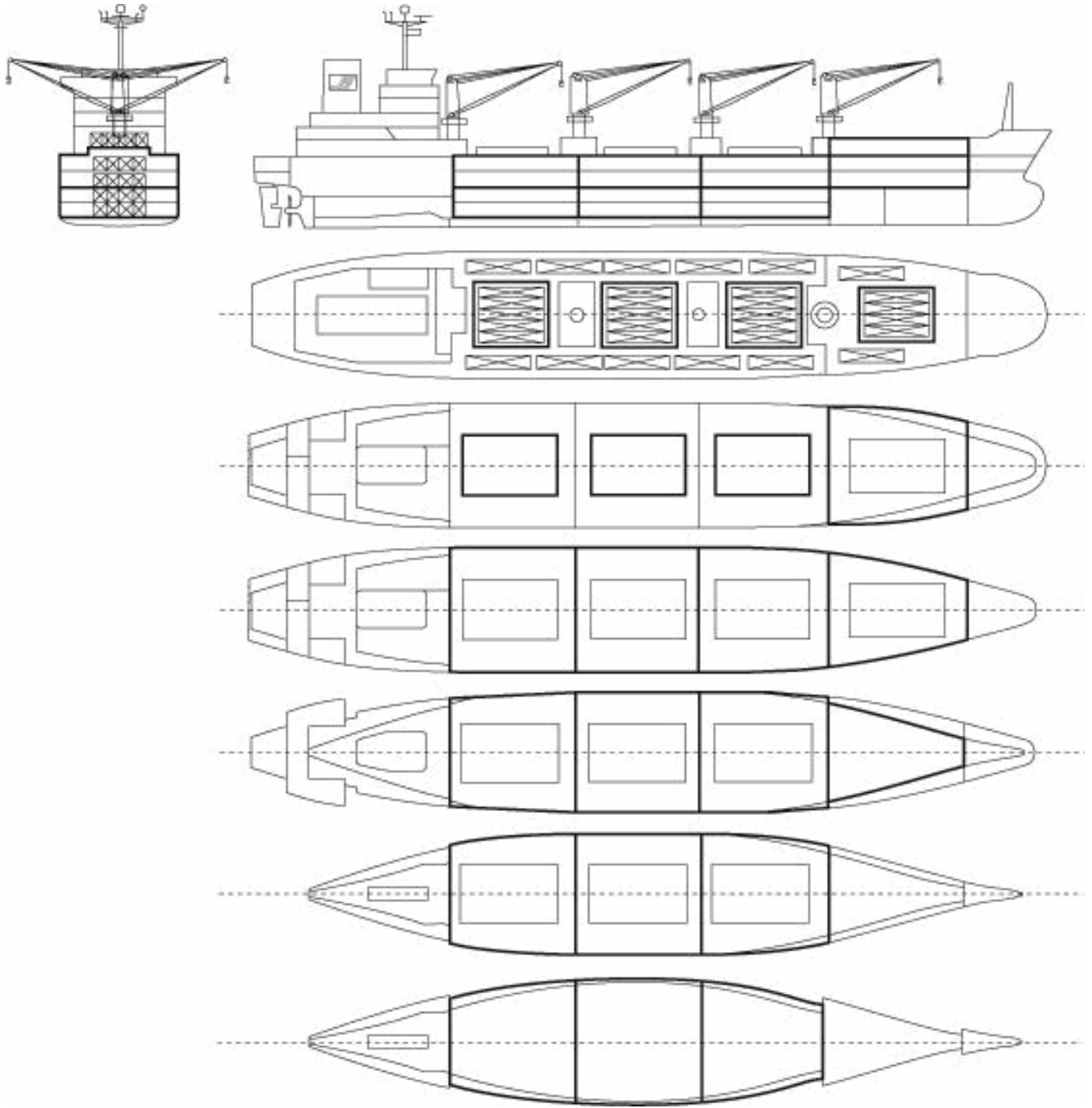
Cargo Gear

2 Cranes x 36.0 mt
2 Cranes x 8.0 mt



FEGULUS

526,141 cbft / 5,849 sqm / 5,350 pallets



General Remarks

- Pallet Intake figures are indication only. The figures are based on a stowage factor of 1.32 pallet/sqm in reefer holds, full load of reefer containers based on the standard voyage with 20 pallets in each container

