

EVEREST BAY

449,201 cbft / 5,219 sqm / 3,950 pallets



General

Built	December-1989	International	GT	NT
Flag	Liberia	Panama Canal	8,739.00	4,085.00
Port of Registry	Monrovia	Suez Canal		7,760.00
Callsign	A8KZ3			7,277.96
IMO/Lloyds nr	8911073		Draft	DWAT
Length over all [m]	141.01	Tropical		
Beam [m]	20.60	Summer	8.51	9,692
Depth [m]	13.00	Winter		
Bowthruster(s)	-			

Reefer

Holds	4
Hatches	4
Compartments	19
Minimum Deckheight [m]	
Allowable weight of forklift including cargo	maximum 5 mt (Forklift to be equipped with minimum 4 non hard rubber airtyres)
Temperature zones	8
Cooling sections	1UPD A - 1B C - 2UPD A B - 2C D - 3UPD A B - 3C D - 4UPD A B - 4C D
Temperature range [dC]	-25/+15
Air circulations [/hr]	90
Air renewals [/hr]	4
USDA equipped	Yes, valid until 30-April-2023
Controlled Atmosphere	None
Modified Atmosphere	No equipment on board



EVEREST BAY

449,201 cbft / 5,219 sqm / 3,950 pallets

Classification Details

Classification Society	Nippon Kaiji Kyokai (NKK)
Classification characters	NS* (EQ CV) / MNS*
Installation characters	RMC*, CHG, MPP, LSA, RCF
Special Description	
Other Classification	
Equivalent Finnish/Swedish	
Ice Strengthening	-

Reefer Compartment Capacity Breakdown

	Hold 1		Hold 2		Hold 3		Hold 4		Total	
	Cbft	Sqm	Cbft	Sqm	Cbft	Sqm	Cbft	Sqm	Cbft	Sqm
UPD	6,457	70.00	7,737	85.00	7,777	85.00	7,824	85.00	29,795	325.00
A	25,494	277.00	32,634	401.00	29,856	370.00	31,808	395.00	119,792	1,443.00
B	18,572	201.00	31,630	373.00	29,492	350.00	31,858	374.00	111,552	1,298.00
C	15,629	179.00	30,027	353.00	30,775	371.00	31,956	369.00	108,387	1,272.00
D			26,063	285.00	29,021	339.00	24,591	257.00	79,675	881.00
Total	66,152	727.00	128,091	1,497.00	126,921	1,515.00	128,037	1,480.00	449,201	5,219.00

Hold 1- 4 Legenda

Non insulated Deck, air passes through (aka Spar Deck)

Insulated, air tight Deck or Tanktop

Non Insulated, air tight Deck

Hatch sizes

	Hold 1	Hold 2	Hold 3	Hold 4
	l x b	l x b	l x b	l x b
Deck	7.35 x 6.00	8.10 x 6.00	8.10 x 6.00	8.10 x 6.00
UPD	7.30 x 6.00	8.10 x 6.00	8.10 x 6.00	8.10 x 6.00
A	7.30 x 6.00	8.10 x 6.00	8.10 x 6.00	8.10 x 6.00
B	7.30 x 5.20	8.10 x 6.00	8.10 x 6.00	8.10 x 6.00
C		8.10 x 6.00	8.10 x 6.00	8.10 x 6.00

Container Carrying Capacity

Container Carrying Capacity		Max FEU's	Add. TEU's	Max TEU's	Add. FEU's
<u>On Weather Deck and Hatches</u>					
Empty Positions	Standard	0	0	0	0
Max Stackweight	Standard	0	0	0	0
Max Stackweight - Self-sustained	Standard	0	0	0	0
<u>Reefer Hold</u>					
Empty Positions	Standard	0	0	0	0
Max Stackweight	Standard	0	0	0	0
Max Stackweight - Self-sustained	Standard	0	0	0	0

'Max Stackweight' and 'Max Stackweight - Self-sustained' are the number of laden containers that can be loaded basis the maximum stackweight, calculating 26 mt gross for a laden FEU and 14 mt gross for a laden TEU

Above figures are as per vessel's technical layout. Actual container intake is subject to master's approval and depending on stability, stackweight and visibility.



EVEREST BAY

449,201 cbft / 5,219 sqm / 3,950 pallets

Standard Voyage Container Carrying Capacity

Nr of High Cube (9.5') Reefers	0
of which Selfsustained	0

'Standard Voyage' = voyage from Panama Canal to Rotterdam, with a full cargo of bananas in the holds and departing with full bunker tanks. Containers on this voyage are considered to weigh 26 mt gross.

Reefer Plugs

Nr. of electrical Reefer Plugs	0
--------------------------------	---

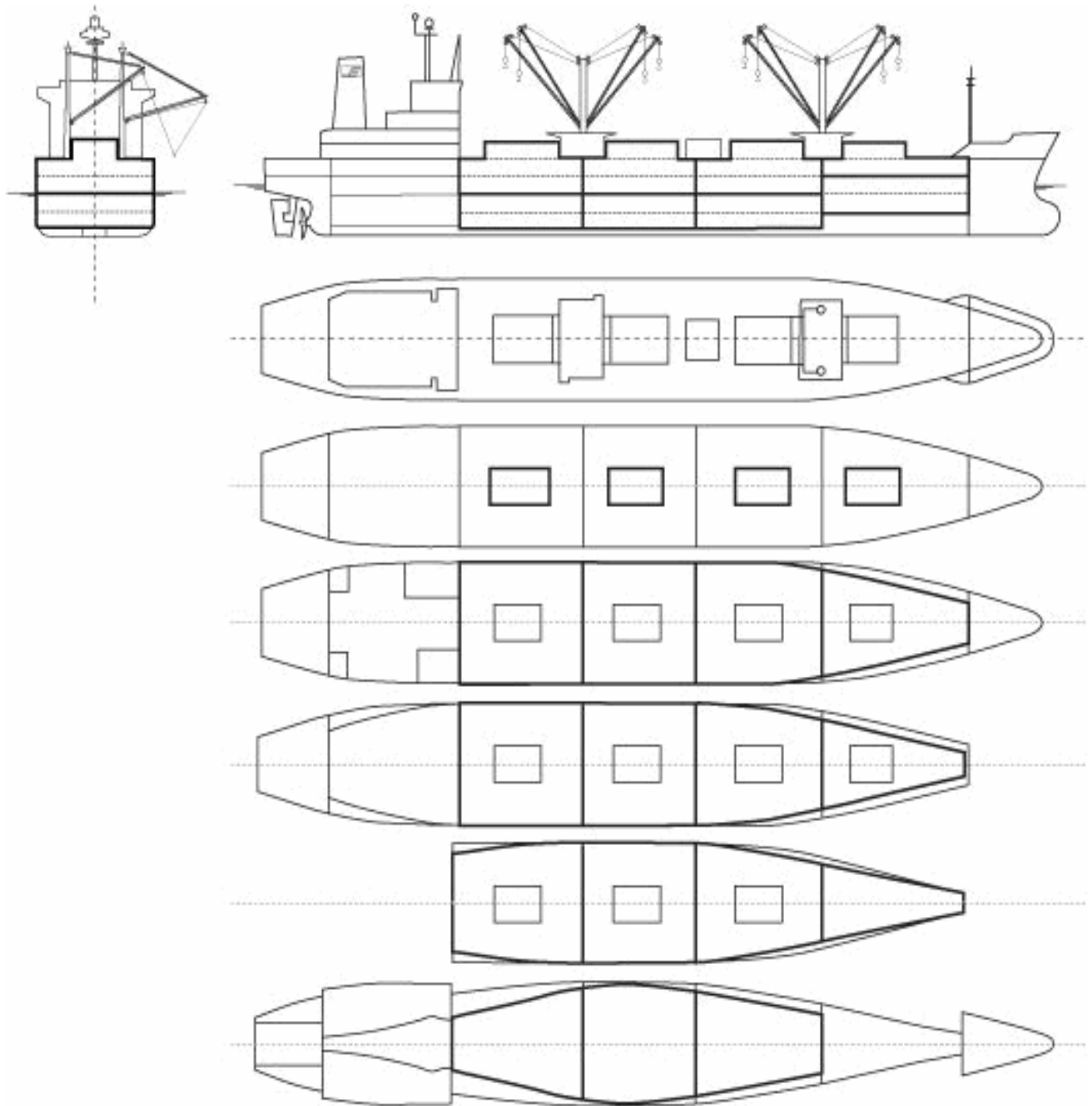
Cargo Gear

8 Derricks x 5.0 mt or 4 x 3.5 mt in Union Purchase



EVEREST BAY

449,201 cbft / 5,219 sqm / 3,950 pallets



General Remarks

- Pallet Intake figures are indication only. The figures are based on a stowage factor of 1.32 pallet/sqm in reefer holds, full load of reefer containers based on the standard voyage with 20 pallets in each container

