

ATLANTIC REEFER

597,139 cbft / 6,804 sqm / 8,550 pallets



General

Built	October-1998	International *)	GT	NT
Flag	Liberia	Panama Canal	14,505.00/13,055.00	7,580.00
Port of Registry	Monrovia	Suez Canal		12,166.00
Callsign	D5FE2			13,035.79
IMO/Lloyds nr	9179256		Draft	DWAT
Length over all [m]	175.72	Tropical		
Beam [m]	22.60	Summer	9.72	17,217
Depth [m]	13.30	Winter		
Bowthruster(s)	-			
Exhaust Gas	Open Loop			
Scrubber		Permanent Ballast		867

*) The first GT value is the official value on the ITC. Because of the special (partly) hatchless design of the vessel, a second GT has been assigned to this vessel which is to be used for calculation of harbour duties etc. This is the second GT value. This value is also shown on the ITC in a remark.

Reefer

Holds	4
Hatches	4
Compartments	19
Minimum Deckheight [m]	
Allowable weight of forklift including cargo	maximum 7 mt (Forklift to be equipped with minimum 4 non hard rubber airtyres)
Temperature zones	8
Cooling sections	1A - 1B - 1C D - 2A B C - 2D E - 3A B C - 3D E - 4A B C - 4D E
Temperature range [dC]	-30/+15
Air circulations [/hr]	90
Air renewals [/hr]	2
USDA equipped	Yes, certificate expired
Controlled Atmosphere	CA pre-piped
Modified Atmosphere	No equipment on board



ATLANTIC REEFER

597,139 cbft / 6,804 sqm / 8,550 pallets

Classification Details

Classification Society	Bureau Veritas (BV)
Main Class symbols	I
Service Notations	+Hull, +Refrigerated cargo ship / equipped for carriage of containers
Navigation Notations	Unrestricted navigation
Additional Class Notations	+Ref-cargo -Aircont, Inwatersurvey
Machinery	+Mach
Equivalent Finnish/Swedish	
Ice Strengthening	-

Reefer Compartment Capacity Breakdown

	Hold 1		Hold 2		Hold 3		Hold 4		Total	
	Cbft	Sqm	Cbft	Sqm	Cbft	Sqm	Cbft	Sqm	Cbft	Sqm
A	35,432	399.00	18,457	202.00	18,445	203.00	18,219	202.00	90,553	1,006.00
B	26,435	269.00	36,430	433.00	36,037	431.00	39,374	467.00	138,276	1,600.00
C	17,273	183.00	37,816	453.00	41,793	497.00	41,631	479.00	138,513	1,612.00
D	14,038	157.00	33,862	391.00	40,443	479.00	36,454	408.00	124,797	1,435.00
E			31,067	339.00	42,544	483.00	31,389	329.00	105,000	1,151.00
Total	93,178	1,008.00	157,632	1,818.00	179,262	2,093.00	167,067	1,885.00	597,139	6,804.00

Hold 1- 4 Legend

Non insulated Deck, air passes through (aka Spar Deck)

Insulated, air tight Deck or Tanktop

Non Insulated, air tight Deck

Hatch sizes Reefer holds

	Hold 1	Hold 2	Hold 3	Hold 4
	l x b	l x b	l x b	l x b
Deck	8.10 x 6.00	8.10 x 6.00	8.10 x 6.00	8.10 x 6.00
A	8.10 x 6.00	8.10 x 6.00	8.10 x 6.00	8.10 x 6.00
B	8.10 x 6.00	8.10 x 6.00	8.10 x 6.00	8.10 x 6.00
C	5.20 x 5.20	8.10 x 6.00	8.10 x 6.00	8.10 x 6.00
D		8.10 x 6.00	8.10 x 6.00	8.10 x 6.00



ATLANTIC REEFER

597,139 cbft / 6,804 sqm / 8,550 pallets

Container slot flexibility

	<u>Holds</u>	<u>Deck & Hatches</u>	<u>Total</u>
40'x8'6"(+20'x8'6")	124 (0)	102 (0)	226 (0)
40'x9'6"(+20'x8'6")	124 (0)	102 (0)	226 (0)
20'x8'6"(+40'x8'6")	64 (0)	136 (34)	200 (34)

Homogeneous intake of TEU's of 14mt: 0

Actual intake and distribution always subject to a vessel's stability, trim, bending moments, sheer forces, deadweight, permissible weights, permissible lashing gear break loads, container lashing and stowage plans, ranges of visibility, IMDG stowage/segregation requirements, Panama / Suez Canal Regulations and Cargo Securing Manual.

Reefer Plugs

Deck: 102x40' or 136x20' slots on main deck and reefer hold hatches.
Holds: Each container hold can accommodate 62x40' or 32x20'.
Total: 200

Note: Bay 09 rows 05, 06, 07, 08 are not reachable by own crane

Remote Reefer Monitoring System

Type: None
Maker: N/A
Version:
RDC handheld available: No

Fittings

Fully cellularized for 40' containers in holds. 2 x 20' units can be loaded in one 40' cell.

Permissible Stackloads

Deck: 56 / 90 mt per 20' / 40' stack
Except near hatch1: 40 / 60 mt per 20' / 40' stack

Reefer hatches: 0 / 60 mt per 20' / 40' stack
Except hatch1: 60 / 30 mt per 20' / 40' stack

Container Holds: 50 / 240 mt per 20' / 40' stack

Hatch sizes

<u>Hold</u>	<u>Hatches # / Type</u>	<u>Position</u>	<u>length x width</u>	<u>Panels #</u>	<u>Position</u>	<u>length x width</u>	<u>Panels #</u>
X	0 Open Top	None	N/A	0			
Y	0 Open Top	None	N/A	0			

Container holds X and Y are located in between reefer holds 2 and 3. Both container holds are hatchless.



ATLANTIC REEFER

597,139 cbft / 6,804 sqm / 8,550 pallets

Standard Voyage Container Carrying Capacity

Nr of High Cube (9.5') Reefers 170
of which Selfsustained 170

'Standard Voyage' = voyage from Panama Canal to Rotterdam, with a full cargo of bananas in the holds and departing with full bunker tanks. Containers on this voyage are considered to weigh 26 mt gross.

Reefer Plugs

Nr. of electrical Reefer Plugs 200

General Note Container Carrying Capacity

Figures for container intake on standard voyage are preliminary

Cargo Gear

2 Cranes x 36.0 mt
1 Crane x 8.0 mt
1 Crane x 40.0 mt

Exhaust Gas Scrubber

Type of scrubber: Open Loop
Lowest sulphur% in exhaust gasses based on fuels with max sulphur contents of 3.5%: 0.10 %

- Based on fuel with max Sulphur content of 3.5%:

+ max 0.5% Sulphur in exhaust gas upto full speed consumption.

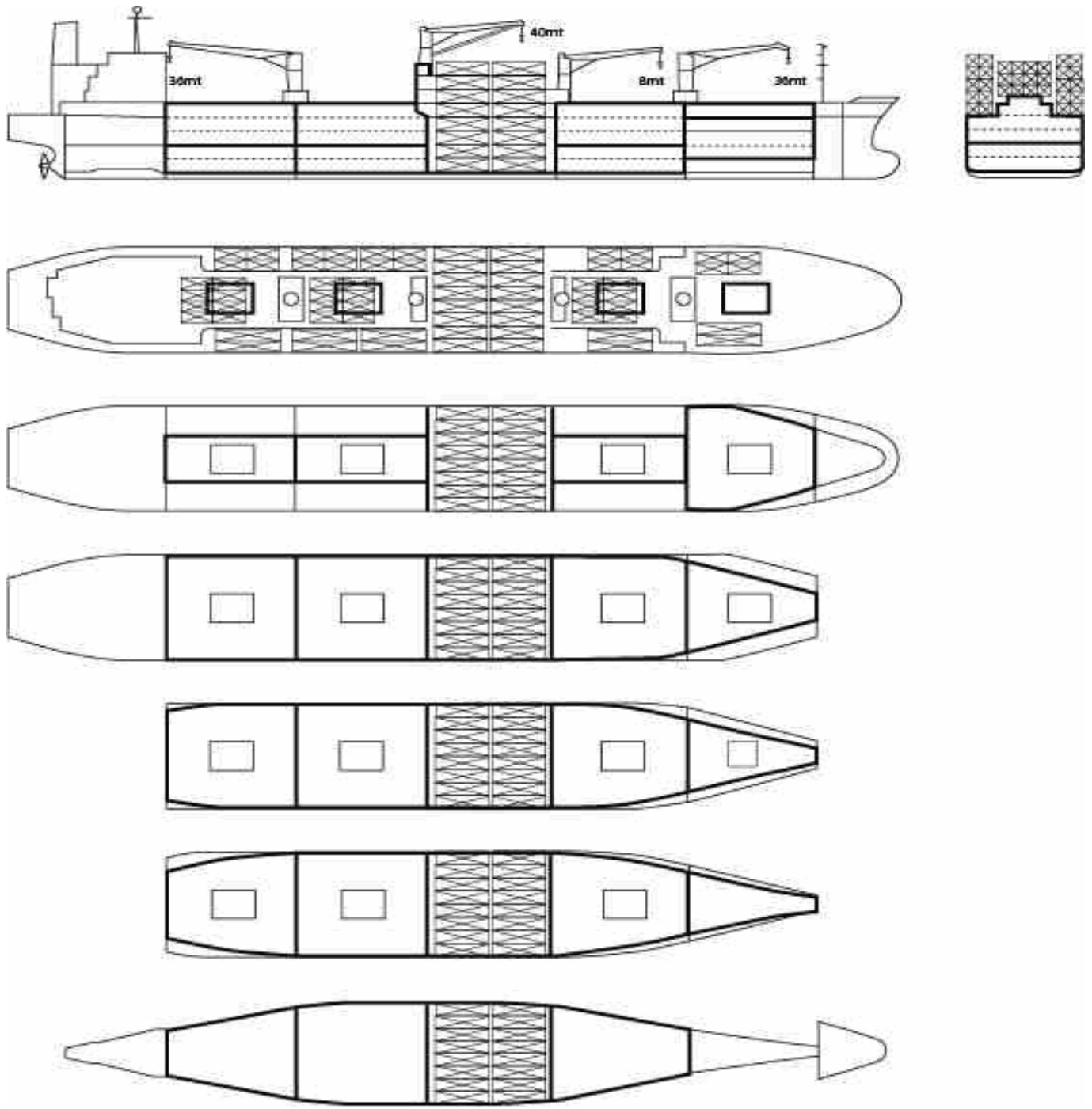
+ max 0.1% Sulphur in exhaust gas on reduced consumption only.

- Local regulations may prohibit use of scrubber in which case alternative low Sulphur fuel/destilate has to be used.



ATLANTIC REEFER

597,139 cbft / 6,804 sqm / 8,550 pallets



General Remarks

- Pallet Intake figures are indication only. The figures are based on a stowage factor of 1.32 pallet/sqm in reefer holds, full load of reefer containers based on the standard voyage with 20 pallets in each container

