

# ALBEMARLE ISLAND

622,632 cbft / 7,317 sqm / 14,140 mt DWAT

No  
Picture  
Available

## General

Built	July-1993	International	<b>GT</b> 14,061.00	<b>NT</b> 6,900.00
Flag	Bahamas	Panama Canal		11,480.00
Port of Registry	Nassau	Suez Canal		11,792.30
Callsign	C6LU3			
IMO/Lloyds nr	9059602		<b>Draft</b>	<b>DWAT</b>
Length over all [m]	179.90	Tropical	9.22	14,140
Beam [m]	25.20	Summer	9.22	14,140
Depth [m]	13.20	Winter	9.22	14,140
Bowthruster(s)	-			

## Reefer

Holds	4
Hatches	4
Compartments	15
Minimum Deckheight [m]	
Allowable weight of forklift including cargo	maximum 7 mt (Forklift to be equipped with minimum 4 non hard rubber airtyres)
Temperature zones	8
Cooling sections	1A - 1B - 1C - 2A - 2B - 2C - 2D - 3A - 3B - 3C - 3D - 4A - 4B - 4C - 4D
Temperature range [dC]	-29/+15
Air circulations [/hr]	90/45/30
Air renewals [/hr]	2
USDA equipped	Yes, valid until 01-November-2023
Controlled Atmosphere	CA pre-piped
Modified Atmosphere	No equipment on board

## Classification Details

Classification Society	Lloyd'S Register (LR)
Classification	+100A1
Hull Notation	refrigerated cargo/container vessel, cargo loading on tween deck plating limited to 1.8 mt/sqm
Machinery Notation	+LMC, UMS, +Lloyds RMC



# ALBEMARLE ISLAND

622,632 cbft / 7,317 sqm / 14,140 mt DWAT

## Reefer Compartment Capacity Breakdown

	Hold 1		Hold 2		Hold 3		Hold 4		Total	
	Cbft	Sqm	Cbft	Sqm	Cbft	Sqm	Cbft	Sqm	Cbft	Sqm
A	53,042	578.00	53,431	594.00	50,182	559.00	50,358	557.00	207,013	2,288.00
B	33,902	395.00	44,814	548.00	46,333	563.00	46,404	560.00	171,453	2,066.00
C	21,507	263.00	39,305	478.00	46,651	564.00	43,472	528.00	150,935	1,833.00
D			29,770	355.00	35,986	438.00	27,475	337.00	93,231	1,130.00
<b>Total</b>	<b>108,451</b>	<b>1,236.00</b>	<b>167,320</b>	<b>1,975.00</b>	<b>179,152</b>	<b>2,124.00</b>	<b>167,709</b>	<b>1,982.00</b>	<b>622,632</b>	<b>7,317.00</b>

Hold 1- 4 Legend

Non insulated Deck, air passes through (aka Spar Deck)

Insulated, air tight Deck or Tanktop

Non Insulated, air tight Deck

## Hatch sizes

	Hold 1	Hold 2	Hold 3	Hold 4
	l x b	l x b	l x b	l x b
Deck	13.70 x 10.80	13.70 x 10.80	13.70 x 10.80	13.70 x 10.80
A		-		
B		-		
C		-		

Container Carrying Capacity	Max FEU's	Add. TEU's	Max TEU's	Add. FEU's	
<u>On Weather Deck and Hatches</u>					
Empty Positions	Standard	157	10	324	0
Max Stackweight	Standard	156	10	322	0
Max Stackweight - Self-sustained	Standard	156	10	322	0
Empty Positions	High Cube	157	10	324	0
Max Stackweight	High Cube	156	10	322	0
Max Stackweight - Self-sustained	High Cube	156	10	322	0
<u>Reefer Hold</u>					
Empty Positions	Standard	56	0	112	0
Max Stackweight	Standard	56	0	112	0
Max Stackweight - Self-sustained	Standard	56	0	112	0
Empty Positions	High Cube	40	0	80	0
Max Stackweight	High Cube	40	0	80	0
Max Stackweight - Self-sustained	High Cube	40	0	80	0

'Max Stackweight' and 'Max Stackweight - Self-sustained' are the number of laden containers that can be loaded basis the maximum stackweight, calculating 26 mt gross for a laden FEU and 14 mt gross for a laden TEU

Above figures are as per vessel's technical layout. Actual container intake is subject to master's approval and depending on stability, stackweight and visibility.



# ALBEMARLE ISLAND

622,632 cbft / 7,317 sqm / 14,140 mt DWAT

## Standard Voyage Container Carrying Capacity

Nr of High Cube (9.5') Reefers	0
of which Selfsustained	0

*'Standard Voyage' = voyage from Panama Canal to Rotterdam, with a full cargo of bananas in the holds and departing with full bunker tanks. Containers on this voyage are considered to weigh 26 mt gross.*

## Reefer Plugs

Nr. of electrical Reefer Plugs	162
--------------------------------	-----

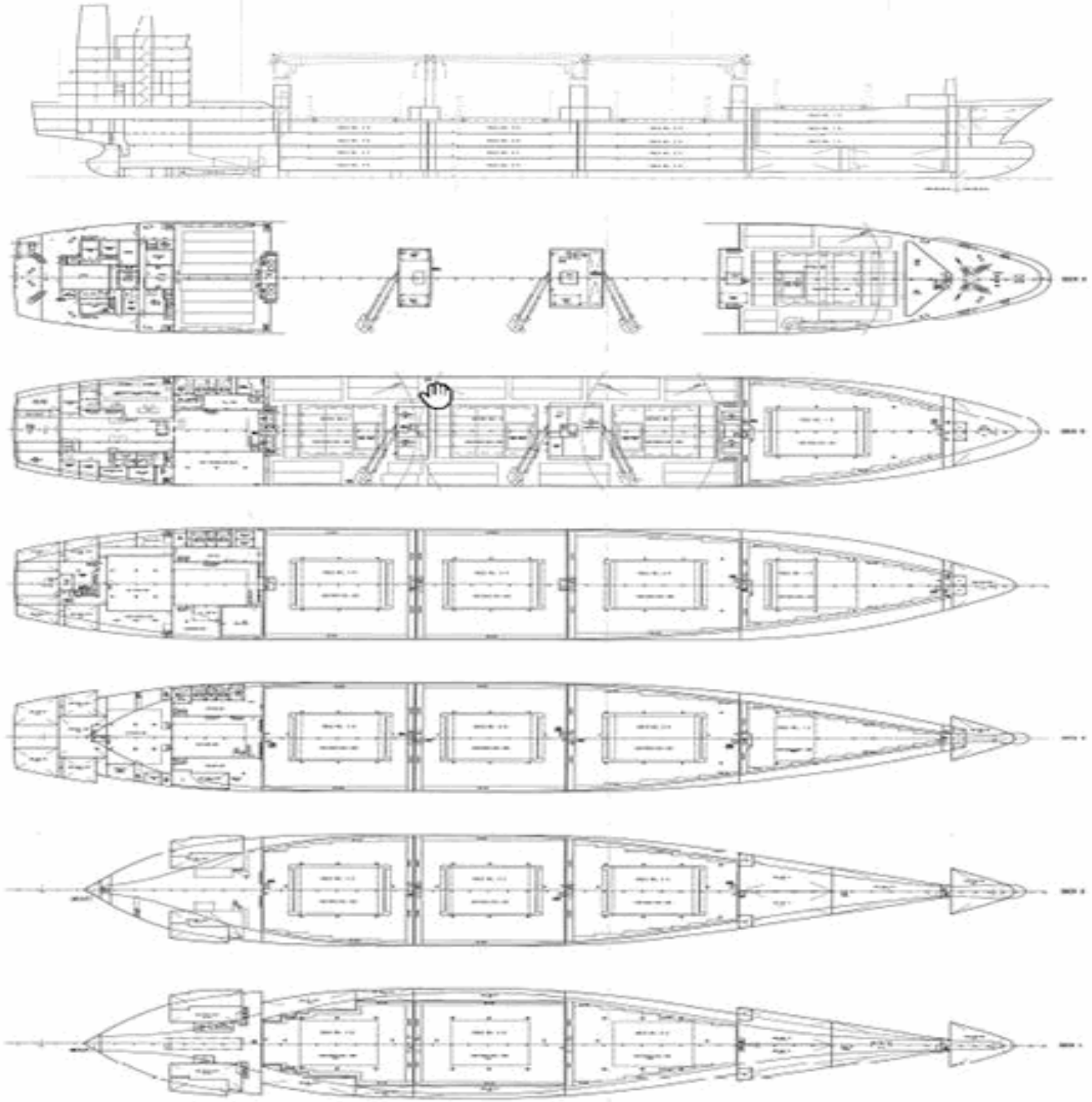
## Cargo Gear

3 Cranes x 40.0 mt or 8.0 mt in high speed modus  
4 Cranes x 10.0 mt



# ALBEMARLE ISLAND

622,632 cbft / 7,317 sqm / 14,140 mt DWAT



## General Remarks

- Pallet Intake figures are indication only. The figures are based on a stowage factor of 1.32 pallet/sqm in reefer holds, full load of reefer containers based on the standard voyage with 20 pallets in each container

