

ALBEMARLE ISLAND

622,632 cbft / 7,317 sqm / 5,540 pallets

No
Picture
Available

General

Built	July-1993	International	GT 14,061.00	NT 6,900.00
Flag	Bahamas	Panama Canal		11,480.00
Port of Registry	Nassau	Suez Canal		11,792.30
Callsign	C6LU3			
IMO/Lloyds nr	9059602		Draft	DWAT
Length over all [m]	179.90	Tropical	9.22	14,140
Beam [m]	25.20	Summer	9.22	14,140
Depth [m]	13.20	Winter	9.22	14,140
Bowthruster(s)	-			

Reefer

Holds	4
Hatches	4
Compartments	15
Minimum Deckheight [m]	
Allowable weight of forklift including cargo	maximum 7 mt (Forklift to be equipped with minimum 4 non hard rubber airtyres)
Temperature zones	8
Cooling sections	1A - 1B - 1C - 2A - 2B - 2C - 2D - 3A - 3B - 3C - 3D - 4A - 4B - 4C - 4D
Temperature range [dC]	-29/+15
Air circulations [/hr]	90/45/30
Air renewals [/hr]	2
USDA equipped	Yes, valid until 01-November-2023
Controlled Atmosphere	CA pre-piped
Modified Atmosphere	No equipment on board

Classification Details

Classification Society	Lloyd'S Register (LR)
Classification	+100A1
Hull Notation	refrigerated cargo/container vessel, cargo loading on tween deck plating limited to 1.8 mt/sqm
Machinery Notation	+LMC, UMS, +Lloyds RMC



ALBEMARLE ISLAND

622,632 cbft / 7,317 sqm / 5,540 pallets

Reefer Compartment Capacity Breakdown

	Hold 1		Hold 2		Hold 3		Hold 4		Total	
	Cbft	Sqm	Cbft	Sqm	Cbft	Sqm	Cbft	Sqm	Cbft	Sqm
A	53,042	578.00	53,431	594.00	50,182	559.00	50,358	557.00	207,013	2,288.00
B	33,902	395.00	44,814	548.00	46,333	563.00	46,404	560.00	171,453	2,066.00
C	21,507	263.00	39,305	478.00	46,651	564.00	43,472	528.00	150,935	1,833.00
D			29,770	355.00	35,986	438.00	27,475	337.00	93,231	1,130.00
Total	108,451	1,236.00	167,320	1,975.00	179,152	2,124.00	167,709	1,982.00	622,632	7,317.00

Hold 1- 4 Legend

Non insulated Deck, air passes through (aka Spar Deck)

Insulated, air tight Deck or Tanktop

Non Insulated, air tight Deck

Hatch sizes

	Hold 1	Hold 2	Hold 3	Hold 4
	l x b	l x b	l x b	l x b
Deck	13.70 x 10.80	13.70 x 10.80	13.70 x 10.80	13.70 x 10.80
A		-		
B		-		
C		-		

Container Carrying Capacity	Max FEU's	Add. TEU's	Max TEU's	Add. FEU's	
On Weather Deck and Hatches					
Empty Positions	Standard	157	10	324	0
Max Stackweight	Standard	156	10	322	0
Max Stackweight - Selfsustained	Standard	156	10	322	0
Empty Positions	High Cube	157	10	324	0
Max Stackweight	High Cube	156	10	322	0
Max Stackweight - Selfsustained	High Cube	156	10	322	0
Reefer Hold					
Empty Positions	Standard	56	0	112	0
Max Stackweight	Standard	56	0	112	0
Max Stackweight - Selfsustained	Standard	56	0	112	0
Empty Positions	High Cube	40	0	80	0
Max Stackweight	High Cube	40	0	80	0
Max Stackweight - Selfsustained	High Cube	40	0	80	0

'Max Stackweight' and 'Max Stackweight - Selfsustained' are the number of laden containers that can be loaded basis the maximum stackweight, calculating 26 mt gross for a laden FEU and 14 mt gross for a laden TEU

Above figures are as per vessel's technical layout. Actual container intake is subject to master's approval and depending on stability, stackweight and visibility.



ALBEMARLE ISLAND

622,632 cbft / 7,317 sqm / 5,540 pallets

Standard Voyage Container Carrying Capacity

Nr of High Cube (9.5') Reefers 0
of which Selfsustained 0

'Standard Voyage' = voyage from Panama Canal to Rotterdam, with a full cargo of bananas in the holds and departing with full bunker tanks. Containers on this voyage are considered to weigh 26 mt gross.

Reefer Plugs

Nr. of electrical Reefer Plugs 162

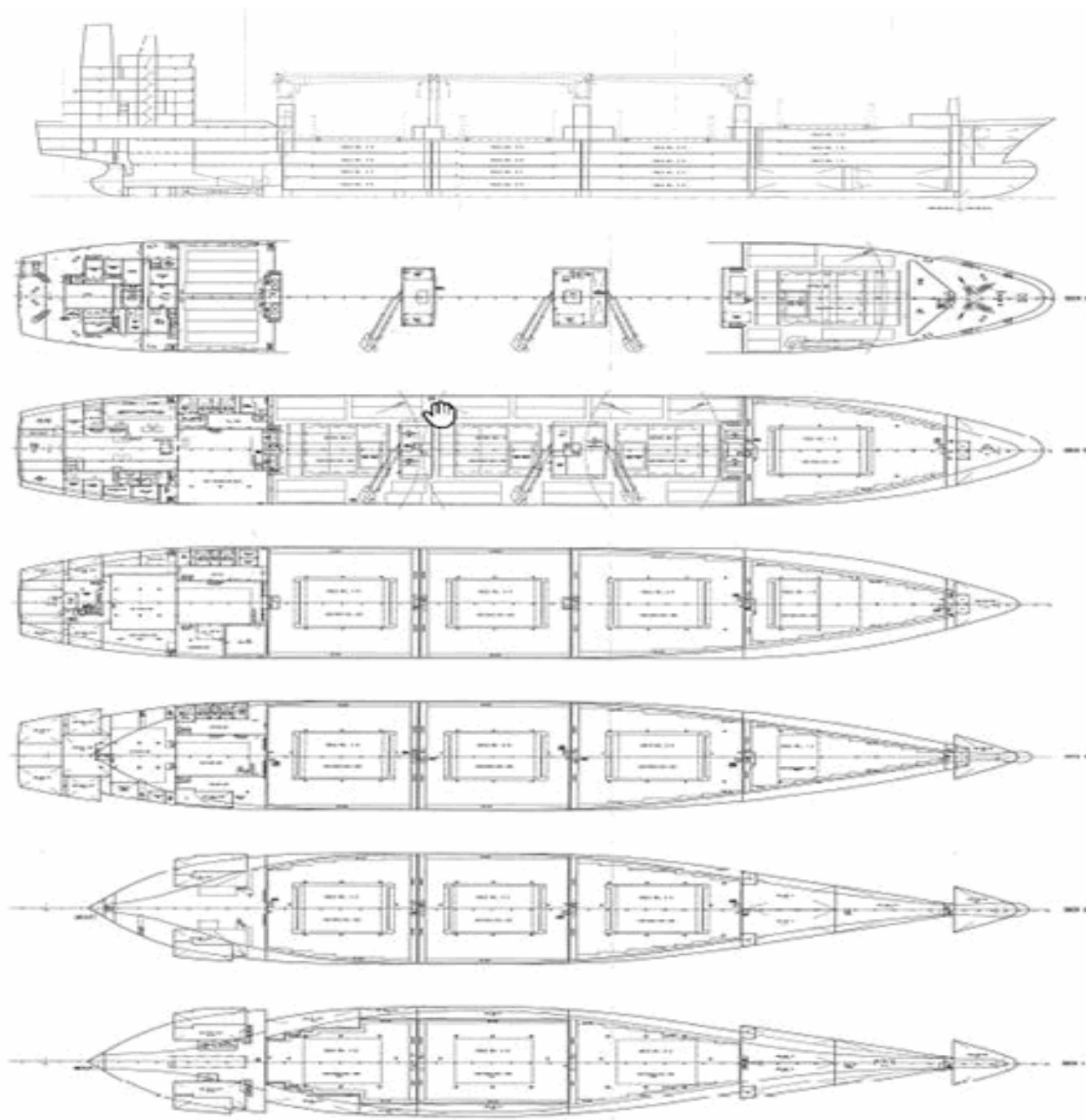
Cargo Gear

3 Cranes x 40.0 mt or 8.0 mt in high speed modus
4 Cranes x 10.0 mt



ALBEMARLE ISLAND

622,632 cbft / 7,317 sqm / 5,540 pallets



General Remarks

- Pallet Intake figures are indication only. The figures are based on a stowage factor of 1.32 pallet/sqm in reefer holds, full load of reefer containers based on the standard voyage with 20 pallets in each container

