

# BALTIC KLIPPER

661,636 cbft / 7,118 sqm / 9,232 pallets



## General

Built	September-2010	International	<b>GT</b>	<b>NT</b>
Flag	Liberia	Panama Canal	14,091.00	7,603.00
Port of Registry	Monrovia	Suez Canal		11,824.00
Callsign	A8VR5			12,766.65
IMO/Lloyds nr	9454759		<b>Draft</b>	<b>DWAT</b>
Length over all [m]	165.00	Tropical	10.53	16,413
Beam [m]	25.00	Summer	10.32	15,693
Depth [m]	14.00	Winter	10.10	14,979
Bowthruster(s)	1 x 1,000kW			

## Reefer

Holds	4
Hatches	4
Compartments	16
Minimum Deckheight [m]	
Allowable weight of forklift including cargo	maximum 9 mt (Forklift to be equipped with minimum 4 non hard rubber airtyres)
Temperature zones	8
Cooling sections	1FC - 1A - 1B - 1C - 2A - 2B - 2C - 2D - 3A - 3B - 3C - 3D - 4A - 4B - 4C - 4D
Temperature range [dC]	-25/+15
Air circulations [/hr]	90/60/45
Air renewals [/hr]	3
USDA equipped	Yes, certificate expired
Controlled Atmosphere	CA pre-piped
Modified Atmosphere	No equipment on board



# BALTIC KLIPPER

661,636 cbft / 7,118 sqm / 9,232 pallets

## Classification Details

Classification Society	Bureau Veritas (BV)
Main Class symbols	I, +HULL, +MACH
Service Notations	Container ship, Refrigerated cargo ship, Equipped for the carriage of vehicles
Navigation Notations	Unrestricted navigation
Additional Class Notations	+AUT-UMS, MON-SHAFT, +REF-CARGO -AIRCONT, +REF-CONT(E), ICE CLASS IB, INWATERSURVEY
Machinery	+MACH
Equivalent Finnish/Swedish	
Ice Strengthening	IB

## Reefer Compartment Capacity Breakdown

	Hold 1		Hold 2		Hold 3		Hold 4		Total	
	Cbft	Sqm	Cbft	Sqm	Cbft	Sqm	Cbft	Sqm	Cbft	Sqm
FC	55,535	573.90							55,535	573.90
A	33,228	346.80	52,395	535.30	52,621	543.90	48,099	486.50	186,343	1,912.50
B	26,371	284.60	46,147	513.20	48,151	546.70	43,413	484.70	164,082	1,829.20
C	22,852	237.50	41,527	464.30	47,070	541.30	40,111	440.90	151,560	1,684.00
D			35,690	371.90	34,403	403.30	34,023	343.40	104,116	1,118.60
<b>Total</b>	<b>137,986</b>	<b>1,442.80</b>	<b>175,759</b>	<b>1,884.70</b>	<b>182,245</b>	<b>2,035.20</b>	<b>165,646</b>	<b>1,755.50</b>	<b>661,636</b>	<b>7,118.20</b>

Hold 1- 4 Legend

Non insulated Deck, air passes through (aka Spar Deck)

Insulated, air tight Deck or Tanktop

Non Insulated, air tight Deck

## Hatch sizes

	Hold 1	Hold 2	Hold 3	Hold 4
	l x b	l x b	l x b	l x b
Deck	7.00 x 10.50	12.60 x 10.50	12.60 x 10.50	12.60 x 10.50
FC	7.00 x 10.50	-		
A	7.00 x 10.50	12.60 x 10.50	12.60 x 10.50	12.60 x 10.50
B	7.00 x 8.00	12.60 x 10.50	12.60 x 10.50	12.60 x 10.50
C		12.60 x 10.50	12.60 x 10.50	12.60 x 10.50



# BALTIC KLIPPER

661,636 cbft / 7,118 sqm / 9,232 pallets

Container Carrying Capacity		Max FEU's	Add. TEU's	Max TEU's	Add. FEU's
<u>On Weather Deck and Hatches</u>					
Empty Positions	Standard	267	9	552	0
Max Stackweight	Standard	247	9	503	0
Max Stackweight - Self-sustained	Standard	242	9	434	0
Empty Positions	High Cube	249	9	507	0
Max Stackweight	High Cube	247	9	503	0
Max Stackweight - Self-sustained	High Cube	242	9	434	0
<u>Reefer Hold</u>					
Empty Positions	Standard	48	12	108	0
Max Stackweight	Standard	48	12	108	0
Max Stackweight - Self-sustained	Standard	48	12	108	0
Empty Positions	High Cube	48	12	108	0
Max Stackweight	High Cube	48	12	108	0
Max Stackweight - Self-sustained	High Cube	48	12	108	0

'Max Stackweight' and 'Max Stackweight - Self-sustained' are the number of laden containers that can be loaded basis the maximum stackweight, calculating 26 mt gross for a laden FEU and 14 mt gross for a laden TEU

Above figures are as per vessel's technical layout. Actual container intake is subject to master's approval and depending on stability, stackweight and visibility.

## Standard Voyage Container Carrying Capacity

Nr of High Cube (9.5') Reefers 192  
of which Self-sustained 192

'Standard Voyage' = voyage from Panama Canal to Rotterdam, with a full cargo of bananas in the holds and departing with full bunker tanks. Containers on this voyage are considered to weigh 26 mt gross.

## Reefer Plugs

Nr. of electrical Reefer Plugs 200

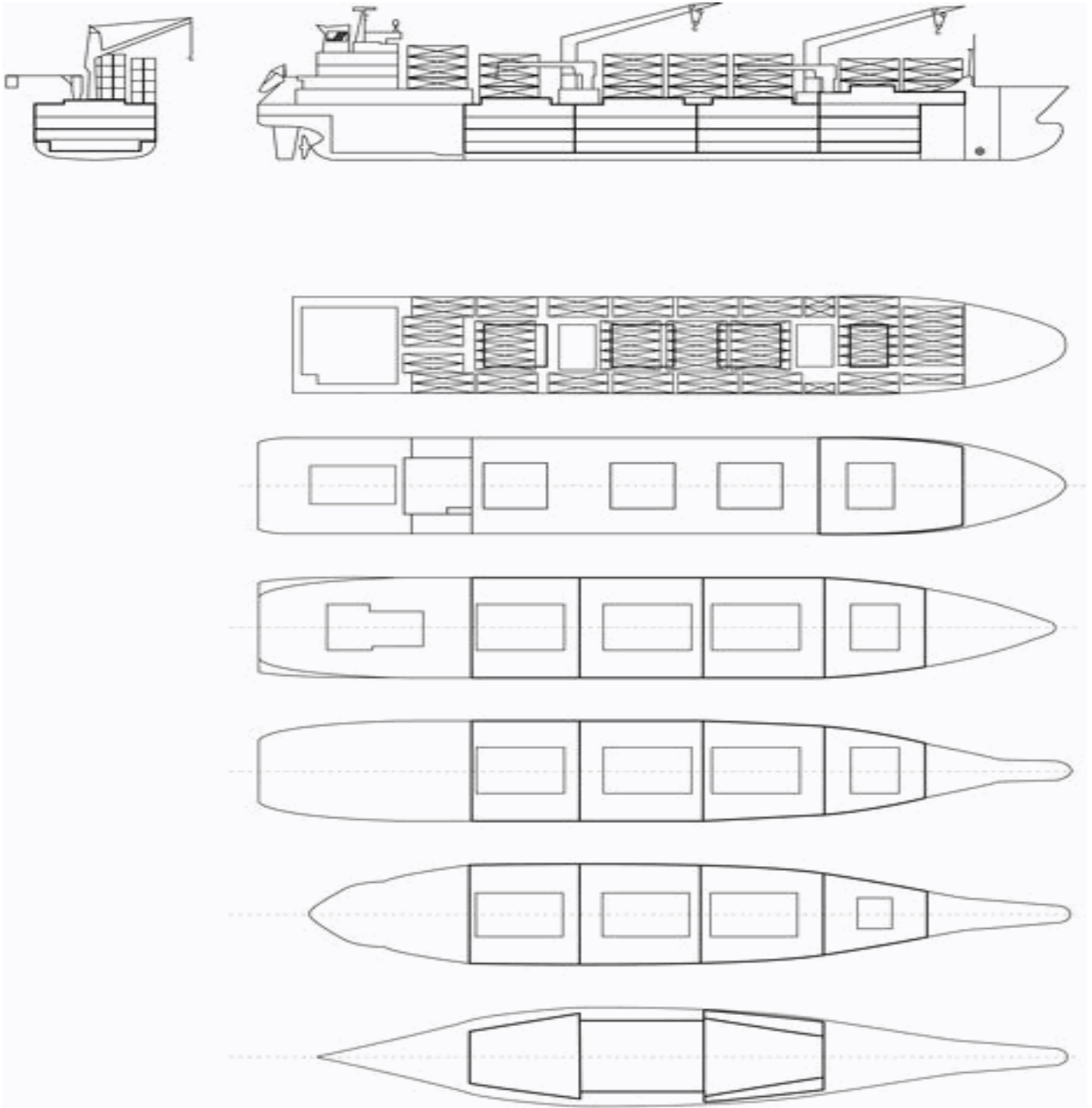
## Cargo Gear

2 Cranes x 40.0 mt  
2 Cranes x 8.0 mt



# BALTIC KLIPPER

661,636 cbft / 7,118 sqm / 9,232 pallets



## General Remarks

- Pallet Intake figures are indication only. The figures are based on a stowage factor of 1.32 pallet/sqm in reefer holds, full load of reefer containers based on the standard voyage with 20 pallets in each container

