

SEATRADE BLUE

Nominal 2,259 TEU / Homogeneous 1,580 TEU@14mt
 Effective 778 FEU@30mt / Reefer Equivalent 13,480 pallets



General

Built	March-2017	International	GT 24,901.00	NT 9,207.00
Flag	Liberia	Panama Canal		22,039.00
Port of Registry	Monrovia	Suez Canal		22,271.14
Callsign	D5LS3			
IMO/Lloyds nr	9756107		Draft	DWAT
Length over all [m]	185.00	Tropical	0.00	0
Beam [m]	30.00	Summer	10.00	27,200
Depth [m]	16.50	Winter	0.00	0
Bowthruster(s)	1 x 1,200kW	Scantling	10.00	27,200
		Design	9.00	22,380

Classification Details

Classification Society	Bureau Veritas (BV)
Main Class symbols	I, +Hull, +Mach
Service Notations	Container Ship
Navigation Notations	Unrestricted Navigation
Additional Class Notations	CPS(WBT), +AUT-UMS(SS), +SYS-NEQ-1(SS), GREEN PASSPORT, CLEANSHIP, SEEMP, INWATERSURVEY
Machinery	+MACH
Equivalent Finnish/Swedish	
Ice Strenghtening	-



SEATRADE BLUE

Nominal 2,259 TEU / Homogeneous 1,580 TEU@14mt
Effective 778 FEU@30mt / Reefer Equivalent 13,480 pallets

Hatch sizes Container holds

<u>Container Hold</u>	<u>Position</u>	<u>l x b</u>	<u>Position</u>	<u>l x b</u>
1	Fwd	12.64 x 15.66		
	Aft	12.64 x 20.82		
2	Fwd	12.64 x 25.80		
	Aft	12.64 x 25.80		
3	Fwd	12.64 x 25.80		
	Aft	12.64 x 25.80		
4	Fwd	12.64 x 25.80		
	Aft	12.64 x 25.80		
5	Centre	12.64 x 25.80		



SEATRADE BLUE

Nominal 2,259 TEU / Homogeneous 1,580 TEU@14mt
 Effective 778 FEU@30mt / Reefer Equivalent 13,480 pallets

FEU - Nominal 40' slot capacity

Bay ↓	Row →	12	10	08	06	04	02	01	03	05	07	09	11	Total	Location
02	8'6"			4	4	4	4	4	4	4	4			32	Hatch 1
	9'6"			4	4	4	4	4	4	4	4			32	
	Stackweight			100	100	100	100	100	100	100	100				
	Reefer Plugs													24	
02	8'6"					1	4	4	1					10	Hold 1
	9'6"					1	4	4	1					10	
	Stackweight					180	180	180	180						
	Reefer Plugs													6	
Remarks															
Row 01: 1 TEU to be loaded to use the FEU slots															
Row 02: 1 TEU to be loaded to use the FEU slots															
Row 03: 2 TEU 's to be loaded to use the FEU slots															
Row 04: 2 TEU 's to be loaded to use the FEU slots															
General: Water cooled Reefers only															

06	8'6"	5	5	5	5	5	5	5	5	5	5	5	5	60	Hatch 1
	9'6"	5	5	5	5	5	5	5	5	5	5	5	5	60	
	Stackweight	100	100	100	100	100	100	100	100	100	100	100	100		
	Reefer Plugs													36	
06	8'6"			1	3	5	6	6	5	3	1			30	Hold 1
	9'6"			1	3	5	6	6	5	3	1			30	
	Stackweight			180	180	180	180	180	180	180	180				
	Reefer Plugs													12	
Remarks															
Row 03: 1 TEU to be loaded to used the FEU slots															
Row 04: 1 TEU to be loaded to used the FEU slots															
Row 05: 1 TEU to be loaded to used the FEU slots															
Row 06: 1 TEU to be loaded to used the FEU slots															
Row 07: 2 TEU's to be loaded to used the FEU slots															
Row 08: 2 TEU's to be loaded to used the FEU slots															

10	8'6"	5	5	5	5	5	5	5	5	5	5	5	5	60	Hatch 2
	9'6"	5	5	5	5	5	5	5	5	5	5	5	5	60	
	Stackweight	100	100	100	100	100	100	100	100	100	100	100	100		
	Reefer Plugs													36	
10	8'6"		3	5	6	6	6	6	6	6	5	3		52	Hold 2
	9'6"		3	5	6	6	6	6	6	6	5	3		52	
	Stackweight		180	180	180	180	180	180	180	180	180	180			
	Reefer Plugs													40	
Remarks															
Row 09: 1 TEU to be loaded to use the FEU slots															
Row 10: 1 TEU to be loaded to use the FEU slots															

14	8'6"	5	5	5	5	5	5	5	5	5	5	5	5	60	Hatch 2
	9'6"	5	5	5	5	5	5	5	5	5	5	5	5	60	
	Stackweight	100	100	100	100	100	100	100	100	100	100	100	100		
	Reefer Plugs													36	
14	8'6"		5	6	6	6	6	6	6	6	6	5		58	Hold 2
	9'6"		5	6	6	6	6	6	6	6	6	5		58	
	Stackweight		180	180	180	180	180	180	180	180	180	180			
	Reefer Plugs													46	



SEATRADE BLUE

Nominal 2,259 TEU / Homogeneous 1,580 TEU@14mt
 Effective 778 FEU@30mt / Reefer Equivalent 13,480 pallets

Bay ↓	Row →	12	10	08	06	04	02	01	03	05	07	09	11	Total	Location
18	8'6"	6	6	6	6	6	6	6	6	6	6	6	6	72	Hatch 3
	9'6"	6	6	6	6	6	6	6	6	6	6	6	6		
	Stackweight	100	100	100	100	100	100	100	100	100	100	100	100	36	
	Reefer Plugs														
18	8'6"		6	6	6	6	6	6	6	6	6	6		60	Hold 3
	9'6"		6	6	6	6	6	6	6	6	6	6			
	Stackweight		180	180	180	180	180	180	180	180	180	180		46	
	Reefer Plugs														
22	8'6"	6	6	6	6	6	6	6	6	6	6	6	6	72	Hatch 3
	9'6"	6	6	6	6	6	6	6	6	6	6	6	6		
	Stackweight	100	100	100	100	100	100	100	100	100	100	100	100	36	
	Reefer Plugs														
22	8'6"		6	6	6	6	6	6	6	6	6	6		60	Hold 3
	9'6"		6	6	6	6	6	6	6	6	6	6			
	Stackweight		180	180	180	180	180	180	180	180	180	180		46	
	Reefer Plugs														
26	8'6"	6	6	6	6	6	6	6	6	6	6	6	6	72	Hatch 4
	9'6"	6	6	6	6	6	6	6	6	6	6	6	6		
	Stackweight	100	100	100	100	100	100	100	100	100	100	100	100	36	
	Reefer Plugs														
26	8'6"		5	6	6	6	6	6	6	6	6	5		58	Hold 4
	9'6"		5	6	6	6	6	6	6	6	6	5			
	Stackweight		180	180	180	180	180	180	180	180	180	180		46	
	Reefer Plugs														
Remarks															
Row 09: 1 TEU to be loaded to use the FEU slots															
Row 10: 1 TEU to be loaded to use the FEU slots															
30	8'6"	6	7	7	7	6	6	6	6	7	7	7	6	78	Hatch 4
	9'6"	6	7	7	7	6	6	6	6	7	7	7	6		
	Stackweight	100	100	100	100	100	100	100	100	100	100	100	100	36	
	Reefer Plugs														
30	8'6"		5	5	6	6	6	6	6	6	5	5		56	Hold 4
	9'6"		5	5	6	6	6	6	6	6	5	5			
	Stackweight		180	180	180	180	180	180	180	180	180	180		46	
	Reefer Plugs														
Remarks															
Row 07: 1 TEU to be loaded to use the FEU slots															
Row 08: 1 TEU to be loaded to use the FEU slots															



SEATRADE BLUE

Nominal 2,259 TEU / Homogeneous 1,580 TEU@14mt
 Effective 778 FEU@30mt / Reefer Equivalent 13,480 pallets

Bay ↓	Row →	12	10	08	06	04	02	01	03	05	07	09	11	Total	Location
34	8'6"	6	7	7	7	7	7	7	7	7	7	7	6	82	Hatch 5
	9'6"	6	7	7	7	7	7	7	7	7	7	7	6	82	
	Stackweight Reefer Plugs	100	100	100	100	100	100	100	100	100	100	100	100	36	
34	8'6"		3	4	5	5	6	6	5	5	4	3		46	Hold 5
	9'6"		3	4	5	5	6	6	5	5	4	3		46	
	Stackweight Reefer Plugs		180	180	180	180	180	180	180	180	180	180	180	26	
Remarks															
Row 03: 1 TEU to be loaded to use the FEU slots															
Row 04: 1 TEU to be loaded to use the FEU slots															
Row 07: 1 TEU to be loaded to use the FEU slots															
Row 08: 1 TEU to be loaded to use the FEU slots															
Row 09: 1 TEU to be loaded to use the FEU slots															
Row 10: 1 TEU to be loaded to use the FEU slots															
38	8'6"	6	8	8	8	8	8	8	8	8	8	8	6	92	Deck
	9'6"	6	8	8	8	8	8	8	8	8	8	8	6	92	
	Stackweight Reefer Plugs	100	100	100	100	100	100	100	100	100	100	100	100	46	
FEU Total	8'6"	51	88	98	103	105	110	110	105	103	98	88	51	1,110	
	9'6"	51	88	98	103	105	110	110	105	103	98	88	51	1,110	
	Reefer Plugs													672	



SEATRADE BLUE

Nominal 2,259 TEU / Homogeneous 1,580 TEU@14mt
 Effective 778 FEU@30mt / Reefer Equivalent 13,480 pallets

TEU - Nominal 20' slot capacity

Bay ↓	Row →	12	10	08	06	04	02	01	03	05	07	09	11	Total	Location	
01	8'6"			4	4	4	4	4	4	4	4			32	Hatch 1	
	9'6"			4	4	4	4	4	4	4	4			32		
	Stackweight			70	70	70	70	70	70	70	70			0		
01	8'6"					1	4	4	1					10	Hold 1	
	9'6"					1	4	4	1					10		
	Stackweight					144	144	144	144					0		
03	8'6"			4	4	4	4	4	4	4	4	4	4	40	Hatch 1	
	9'6"			4	4	4	4	4	4	4	4	4	4	40		
	Stackweight			70	70	70	70	70	70	70	70	70	70	0		
03	8'6"					1	3	5	5	3	1			18	Hold 1	
	9'6"					1	3	5	5	3	1			18		
	Stackweight					144	144	144	144	144	144			0		
05	8'6"			5	5	5	5	5	5	5	5	5	5	60	Hatch 1	
	9'6"			5	5	5	5	5	5	5	5	5	5	60		
	Stackweight			70	70	70	70	70	70	70	70	70	70	0		
05	8'6"					1	3	5	6	6	5	3			30	Hold 1
	9'6"					1	3	5	6	6	5	3			30	
	Stackweight					144	144	144	144	144	144			0		
07	8'6"			5	5	5	5	5	5	5	5	5	5	60	Hatch 1	
	9'6"			5	5	5	5	5	5	5	5	5	5	60		
	Stackweight			70	70	70	70	70	70	70	70	70	70	0		
07	8'6"					3	5	6	6	6	5	3			40	Hold 1
	9'6"					3	5	6	6	6	5	3			40	
	Stackweight					144	144	144	144	144	144			0		
09	8'6"			5	5	5	5	5	5	5	5	5	5	60	Hatch 2	
	9'6"			5	5	5	5	5	5	5	5	5	5	60		
	Stackweight			70	70	70	70	70	70	70	70	70	70	0		
09	8'6"					3	5	6	6	6	5	3			52	Hold 2
	9'6"					3	5	6	6	6	5	3			52	
	Stackweight					144	144	144	144	144	144	144		0		



SEATRADE BLUE

Nominal 2,259 TEU / Homogeneous 1,580 TEU@14mt
 Effective 778 FEU@30mt / Reefer Equivalent 13,480 pallets

Bay ↓	Row →	12	10	08	06	04	02	01	03	05	07	09	11	Total	Location
11	8'6"	5	5	5	5	5	5	5	5	5	5	5	5	60	Hatch 2
	9'6"	5	5	5	5	5	5	5	5	5	5	5	5		
	Stackweight	70	70	70	70	70	70	70	70	70	70	70	70		
	Reefer Plugs													0	
11	8'6"		4	5	6	6	6	6	6	6	5	4	54	Hold 2	
	9'6"		4	5	6	6	6	6	6	6	5	4			
	Stackweight		144	144	144	144	144	144	144	144	144	144			
	Reefer Plugs													2	
13	8'6"	5	5	5	5	5	5	5	5	5	5	5	5	60	Hatch 2
	9'6"	5	5	5	5	5	5	5	5	5	5	5	5		
	Stackweight	70	70	70	70	70	70	70	70	70	70	70	70		
	Reefer Plugs													0	
13	8'6"		5	6	6	6	6	6	6	6	6	5	58	Hold 2	
	9'6"		5	6	6	6	6	6	6	6	6	5			
	Stackweight		144	144	144	144	144	144	144	144	144	144			
	Reefer Plugs													0	
15	8'6"	5	5	5	5	5	5	5	5	5	5	5	5	60	Hatch 2
	9'6"	5	5	5	5	5	5	5	5	5	5	5	5		
	Stackweight	70	70	70	70	70	70	70	70	70	70	70	70		
	Reefer Plugs													0	
15	8'6"		5	6	6	6	6	6	6	6	6	5	58	Hold 2	
	9'6"		5	6	6	6	6	6	6	6	6	5			
	Stackweight		144	144	144	144	144	144	144	144	144	144			
	Reefer Plugs													0	
17	8'6"	6	6	6	6	6	6	6	6	6	6	6	6	72	Hatch 3
	9'6"	6	6	6	6	6	6	6	6	6	6	6	6		
	Stackweight	70	70	70	70	70	70	70	70	70	70	70	70		
	Reefer Plugs													0	
17	8'6"		6	6	6	6	6	6	6	6	6	6	60	Hold 3	
	9'6"		6	6	6	6	6	6	6	6	6	6			
	Stackweight		144	144	144	144	144	144	144	144	144	144			
	Reefer Plugs													0	
19	8'6"	6	6	6	6	6	6	6	6	6	6	6	6	72	Hatch 3
	9'6"	6	6	6	6	6	6	6	6	6	6	6	6		
	Stackweight	70	70	70	70	70	70	70	70	70	70	70	70		
	Reefer Plugs													0	
19	8'6"		6	6	6	6	6	6	6	6	6	6	60	Hold 3	
	9'6"		6	6	6	6	6	6	6	6	6	6			
	Stackweight		144	144	144	144	144	144	144	144	144	144			
	Reefer Plugs													0	



SEATRADE BLUE

Nominal 2,259 TEU / Homogeneous 1,580 TEU@14mt
 Effective 778 FEU@30mt / Reefer Equivalent 13,480 pallets

Bay ↓	Row →	12	10	08	06	04	02	01	03	05	07	09	11	Total	Location
21	8'6"	6	6	6	6	6	6	6	6	6	6	6	6	72	Hatch 3
	9'6"	6	6	6	6	6	6	6	6	6	6	6	6		
	Stackweight Reefer Plugs	70	70	70	70	70	70	70	70	70	70	70	70	0	
21	8'6"		6	6	6	6	6	6	6	6	6	6		60	Hold 3
	9'6"		6	6	6	6	6	6	6	6	6	6			
	Stackweight Reefer Plugs		144	144	144	144	144	144	144	144	144	144		0	
23	8'6"	6	6	6	6	6	6	6	6	6	6	6	6	72	Hatch 3
	9'6"	6	6	6	6	6	6	6	6	6	6	6	6		
	Stackweight Reefer Plugs	70	70	70	70	70	70	70	70	70	70	70	70	0	
23	8'6"		6	6	6	6	6	6	6	6	6	6		60	Hold 3
	9'6"		6	6	6	6	6	6	6	6	6	6			
	Stackweight Reefer Plugs		144	144	144	144	144	144	144	144	144	144		0	
25	8'6"	6	6	6	6	6	6	6	6	6	6	6	6	72	Hatch 4
	9'6"	6	6	6	6	6	6	6	6	6	6	6	6		
	Stackweight Reefer Plugs	70	70	70	70	70	70	70	70	70	70	70	70	0	
25	8'6"		6	6	6	6	6	6	6	6	6	6		60	Hold 4
	9'6"		6	6	6	6	6	6	6	6	6	6			
	Stackweight Reefer Plugs		144	144	144	144	144	144	144	144	144	144		0	
27	8'6"	6	6	6	6	6	6	6	6	6	6	6	6	72	Hatch 4
	9'6"	6	6	6	6	6	6	6	6	6	6	6	6		
	Stackweight Reefer Plugs	70	70	70	70	70	70	70	70	70	70	70	70	0	
27	8'6"		5	6	6	6	6	6	6	6	6	5		58	Hold 4
	9'6"		5	6	6	6	6	6	6	6	6	5			
	Stackweight Reefer Plugs		144	144	144	144	144	144	144	144	144	144		0	
29	8'6"	6	7	7	7	6	6	6	6	7	7	7	6	78	Hatch 4
	9'6"	6	7	7	7	6	6	6	6	7	7	7	6		
	Stackweight Reefer Plugs	70	70	70	70	70	70	70	70	70	70	70	70	0	
29	8'6"		5	6	6	6	6	6	6	6	6	5		58	Hold 4
	9'6"		5	6	6	6	6	6	6	6	6	5			
	Stackweight Reefer Plugs		144	144	144	144	144	144	144	144	144	144		0	



SEATRADE BLUE

Nominal 2,259 TEU / Homogeneous 1,580 TEU@14mt
Effective 778 FEU@30mt / Reefer Equivalent 13,480 pallets

Bay ↓	Row →	12	10	08	06	04	02	01	03	05	07	09	11	Total	Location
31	8'6"	6	7	7	7	7	6	6	6	7	7	7	6	79	Hatch 4
	9'6"	6	7	7	7	7	6	6	6	7	7	7	6	79	
	Stackweight Reefer Plugs	70	70	70	70	70	70	70	70	70	70	70	70	0	
31	8'6"		5	5	6	6	6	6	6	6	5	5		56	Hold 4
	9'6"		5	5	6	6	6	6	6	6	5	5		56	
	Stackweight Reefer Plugs		144	144	144	144	144	144	144	144	144	144	144	0	
33	8'6"	6	7	7	7	7	7	7	7	7	7	7	6	82	Hatch 5
	9'6"	6	7	7	7	7	7	7	7	7	7	7	6	82	
	Stackweight Reefer Plugs	70	70	70	70	70	70	70	70	70	70	70	70	0	
33	8'6"		4	5	5	6	6	6	6	5	5	4		52	Hold 5
	9'6"		4	5	5	6	6	6	6	5	5	4		52	
	Stackweight Reefer Plugs		144	144	144	144	144	144	144	144	144	144	144	0	
35	8'6"	6	7	7	7	7	7	7	7	7	7	7	6	82	Hatch 5
	9'6"	6	7	7	7	7	7	7	7	7	7	7	6	82	
	Stackweight Reefer Plugs	70	70	70	70	70	70	70	70	70	70	70	70	0	
35	8'6"		3	4	5	5	6	6	5	5	4	3		46	Hold 5
	9'6"		3	4	5	5	6	6	5	5	4	3		46	
	Stackweight Reefer Plugs		144	144	144	144	144	144	144	144	144	144	144	0	
37	8'6"	6	8	8	8	8	8	8	8	8	8	8	6	92	Deck
	9'6"	6	8	8	8	8	8	8	8	8	8	8	6	92	
	Stackweight Reefer Plugs	70	70	70	70	70	70	70	70	70	70	70	70	0	
39	8'6"	6	8	8	8	8	8	8	8	8	8	8	6	92	Deck
	9'6"	6	8	8	8	8	8	8	8	8	8	8	6	92	
	Stackweight Reefer Plugs	70	70	70	70	70	70	70	70	70	70	70	70	0	
FEU Total	8'6"	102	183	200	209	215	221	221	214	209	200	183	102	2,259	
	9'6"	102	183	200	209	215	221	221	214	209	200	183	102	2,259	
	Reefer Plugs													2	

Standard Voyage Container Carrying Capacity

Nr of High Cube (9.5') Reefers 0
of which Selfsustained 0

'Standard Voyage' = voyage from Panama Canal to Rotterdam, with a full cargo of bananas in the holds and departing with full bunker tanks. Containers on this voyage are considered to weigh 26 mt gross.

Reefer Plugs

Nr. of electrical Reefer Plugs 674



SEATRADE BLUE

Nominal 2,259 TEU / Homogeneous 1,580 TEU@14mt
 Effective 778 FEU@30mt / Reefer Equivalent 13,480 pallets

Cargo Gear

3 Cranes x 45.0 mt

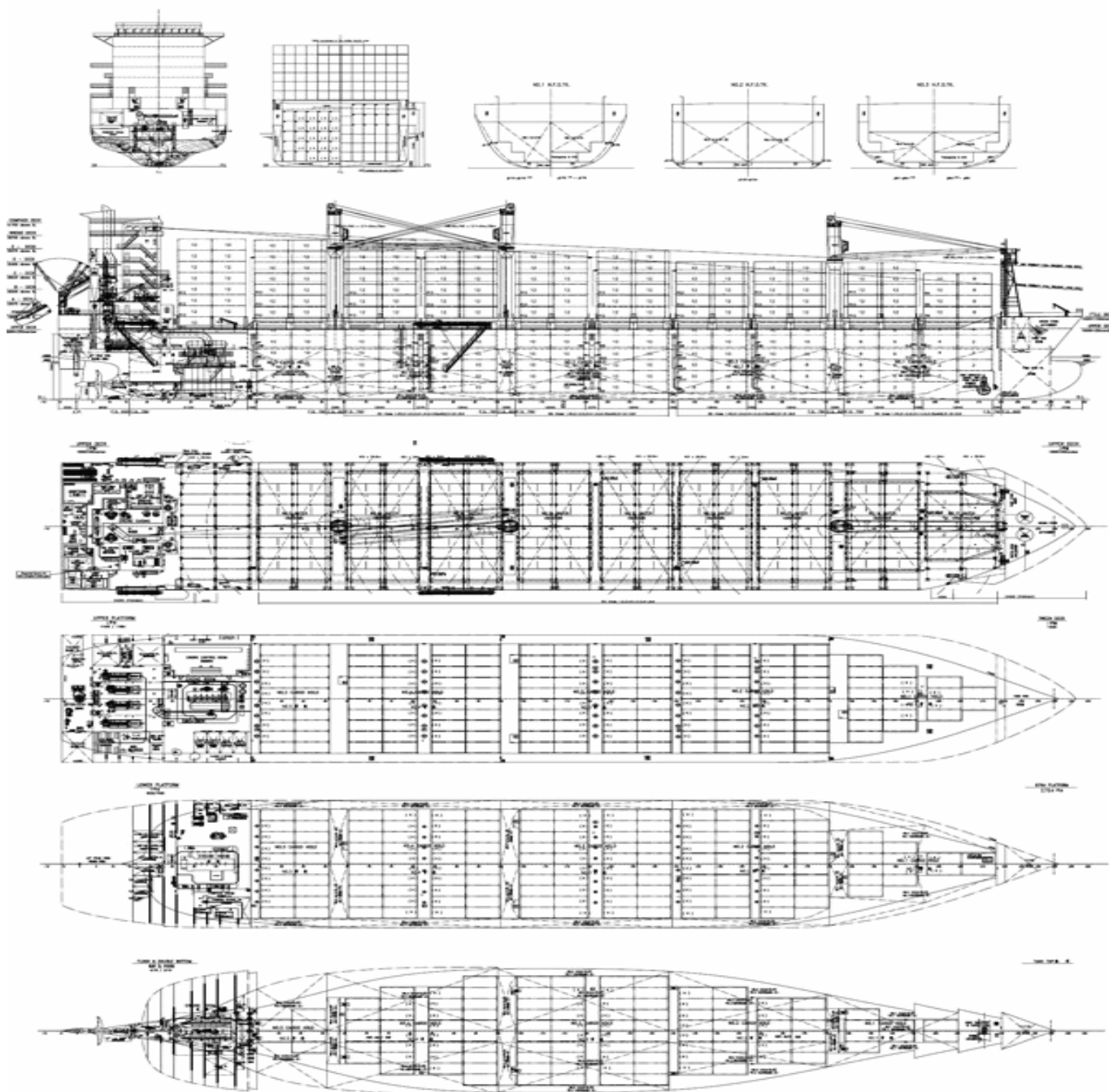
Bunker Tank Capacities

	<u>Cbm (100%)</u>	<u>Cbm at max filling level*</u>	<u>mt**</u>
Bunkertanks dedicated for High Sulphur RMG380 (IFO380)	1,652	1,487	1,473
Bunkertanks dedicated for Low Sulphur RMG380 (IFO380)	331	297	295
Total bunker capacity for RMG380 (IFO380)	1,983	1,784	1,768
Bunkertanks dedicated for Low Sulphur DMA (MGO)	241	216	186
Total bunker capacity for DMA (MGO)	241	216	186
*) Vessel shall not mix bunkers from different bunkering in 1 bunker tank. This may reduce the actual bunker capacity. **) Capacity in mt serve as indication only.			



SEATRADE BLUE

Nominal 2,259 TEU / Homogeneous 1,580 TEU@14mt
Effective 778 FEU@30mt / Reefer Equivalent 13,480 pallets



General Remarks

- Pallet Intake figures are indication only. The figures are based on a stowage factor of 1.32 pallet/sqm in reefer holds, full load of reefer containers based on the standard voyage with 20 pallets in each container
- Nominal Container Intake is based on maximum available empty standard (8'6") container slots whereby IMO visibility rules are respected.
- Effective Container Intake is based on the Nominal Container Intake but then for laden containers with the indicated weight whereby max stackweights are respected.
- Homogeneous TEU Intake at 14 mt is a theoretical figure based on standard (8'6") 20 ft containers of 14 mt, homogeneously loaded with the vertical center of gravity at 45% of the container height. The requirements for minimum stability are hereby respected.

