

FORTUNA BAY

542,470 cbft / 6,351 sqm / 5,691 pallets



General

Built	June-1993	International	GT	NT
Flag	Liberia	Panama Canal	10,203.00	5,869.00
Port of Registry	Monrovia	Suez Canal		9,362.00
Callsign	A8JH6			9,305.54
IMO/Lloyds nr	9067128		Draft	DWAT
Length over all [m]	144.52	Tropical	9.36	12,044
Beam [m]	21.80	Summer	9.17	11,585
Depth [m]	13.10	Winter	8.98	11,130
Bowthruster(s)	-			

Reefer

Holds	4
Hatches	4
Compartments	19
Minimum Deckheight [m]	2.20 (excl local areas)
Allowable weight of forklift including cargo	maximum 7 mt (Forklift to be equipped with minimum 4 non hard rubber airtyres)
Temperature zones	8
Cooling sections	1A 1BCD 2ABC 2DE 3ABC 3DE 4ABC 4DE
Temperature range [dC]	-30/+12
Air circulations [/hr]	90
Air renewals [/hr]	4
USDA equipped	Yes, valid until 01-June-2020
Controlled Atmosphere	CA pre-piped
Modified Atmosphere	No equipment on board



FORTUNA BAY

542,470 cbft / 6,351 sqm / 5,691 pallets

Classification Details

Classification Society	Bureau Veritas (BV)
Main Class symbols	I, +Hull, +Mach
Service Notations	Refrigerated Cargo Ship
Navigation Notations	Unrestricted Navigation
Additional Class Notations	+REF-CARGO (SS)
Machinery	+MACH
Equivalent Finnish/Swedish	
Ice Strengthening	-

Reefer Compartment Capacity Breakdown

	Hold 1		Hold 2		Hold 3		Hold 4		Total	
	Cbft	Sqm	Cbft	Sqm	Cbft	Sqm	Cbft	Sqm	Cbft	Sqm
A	32,418	389.30	16,130	185.50	16,096	186.60	15,851	183.50	80,495	944.90
B	26,385	309.10	31,987	401.50	33,259	416.30	32,924	407.50	124,555	1,534.40
C	21,586	229.20	37,742	403.80	38,339	436.80	35,601	427.20	133,268	1,497.00
D	19,353	214.50	31,571	361.90	35,788	420.60	26,747	329.80	113,459	1,326.80
E			27,619	325.80	33,853	423.90	29,221	298.40	90,693	1,048.10
Total	99,742	1,142.10	145,049	1,678.50	157,335	1,884.20	140,344	1,646.40	542,470	6,351.20

Hatch sizes

	Hold 1	Hold 2	Hold 3	Hold 4
	l x b	l x b	l x b	l x b
Deck	8.10 x 6.00	8.10 x 6.00	8.10 x 6.00	8.10 x 6.00
A				
B				
C				
D				

Container Carrying Capacity	Max FEU's	Add. TEU's	Max TEU's	Add. FEU's	
<u>On Weather Deck and Hatches</u>					
Empty Positions	Standard	63	0	126	0
Max Stackweight	Standard	44	0	88	0
Max Stackweight - Selfsustained	Standard	30	0	60	0
Empty Positions	High Cube	63	0	126	0
Max Stackweight	High Cube	44	0	88	0
Max Stackweight - Selfsustained	High Cube	30	0	60	0

'Max Stackweight' and 'Max Stackweight - Selfsustained' are the number of laden containers that can be loaded basis the maximum stackweight, calculating 26 mt gross for a laden FEU and 14 mt gross for a laden TEU

Above figures are as per vessel's technical layout. Actual container intake is subject to master's approval and depending on stability, stackweight and visibility.



FORTUNA BAY

542,470 cbft / 6,351 sqm / 5,691 pallets

Standard Voyage Container Carrying Capacity

Nr of High Cube (9.5') Reefers 44
of which Selfsustained 30

'Standard Voyage' = voyage from Panama Canal to Rotterdam, with a full cargo of bananas in the holds and departing with full bunker tanks. Containers on this voyage are considered to weigh 26 mt gross.

Reefer Plugs

Nr. of electrical Reefer Plugs 44

Cargo Gear

1 Crane x 36.0 mt
3 Cranes x 8.0 mt

- All speeds are 'about', all consumptions are 'about', basis clean hull, clean propeller and deep (minimum 7 x deepest draft), currentless water/sea with a temperature of maximum 28 degree Celcius.
- Descriptions are given basis maximum Beaufort 4, maximum 2 meters combined swell and wave height.
- Additional MGO may be used for starting/stopping engines and/or manouvring and/or in narrow and/or restricted waters and/or in extreme weather conditions.
- All auxiliary consumptions are based on maintaining cargo temperatures, during reduction period higher consumptions may be recorded.
- All descriptions exclude consumption for carried laden reefer containers. Depending on ao the make and/or type of container, maintenance state of the container, commodity in the container, ambient temperature, use of water cooling, stowage position: as indication an average additional fuel consumption of about 30 kg/container/24hrs when maintaining temperatures to be taken into account.
- Port consumptions are averages for vessel lying alongside berth. Manoevring consumptions are excluded.
- Auxiliary consumption up to 11 mt/day with all generators fully loaded.
- All Speeds are in knots and all consumptions are in metric tons per 24 hours.
- International and/or local regulations, such as but not limited to ECA's, may require use of other fuel grades than specified.
- Conditions are based on sailing with even keel, unless stated otherwise. Significant trim, especially large negative trim, may have negative impact on the performance.
- All consumption figures are based on ISO 8217 (latest revision) specification fuels with following minimum caloric values:
HFO: 40.600 kJ/kg
MGO 42.700 kJ/kg



FORTUNA BAY

542,470 cbft / 6,351 sqm / 5,691 pallets

Bunker Tank Capacities

	<u>Cbm (100%)</u>	<u>Cbm at max filling level*</u>	<u>mt**</u>
Bunkertanks dedicated for High Sulphur RMG380 (IFO380)	1,331	1,132	1,121
Bunkertanks dedicated for Low Sulphur RMG380 (IFO380)	332	282	279
Overflow/Settling/Daytanks for RMG380 (IFO380)	14	0	0
Total bunker capacity for RMG380 (IFO380)	1,677	1,413	1,401
Bunkertanks dedicated for Low Sulphur DMA (MGO)	143	121	103
Overflow/Settling/Daytanks for DMA (MGO)	13	11	10
Total bunker capacity for DMA (MGO)	156	133	113

**) Vessel shall not mix bunkers from different bunkerings in 1 bunker tank. This may reduce the actual bunker capacity.*

***) Capacity in mt serve as indication only. Actual capacity in mt depending on the specific gravity and temperature of the supplied bunkers.*

Vessel to be solely supplied with fuels as per ISO 8217:2010 or any subsequent amendment thereof. All supplied fuels shall be suitable to enable main propulsion and auxiliary machinery to operate efficiently and without harmful effects and in line with any national and/or international requirements. Fuels to be mineral based products and shall not contain waste lubricants (ULO), chemicals or any other harmful substances and shall be of homogenous and stable nature. Charterers to buy and arrange bunkers only from qualified suppliers and/or from majors and carry out their own quality checks as deemed necessary for their control.

Charterers warrant that whenever bunkers are ordered for the vessel, the order not to put a lien on the vessel and explicitly request "The Products shall not include waste chemicals, waste lubricants and/or other non-fuel components."

BIMCO Bunker Fuel Sulphur Content clause for Time Charter parties 2004 to apply.

If vessel is redelivered in an ECA area, Charterers warrant that vessel will be redelivered with sufficient bunkers suitable for consumption as per the requirements of the relevant ECA area to reach a port or place where suitable bunkers may be supplied.

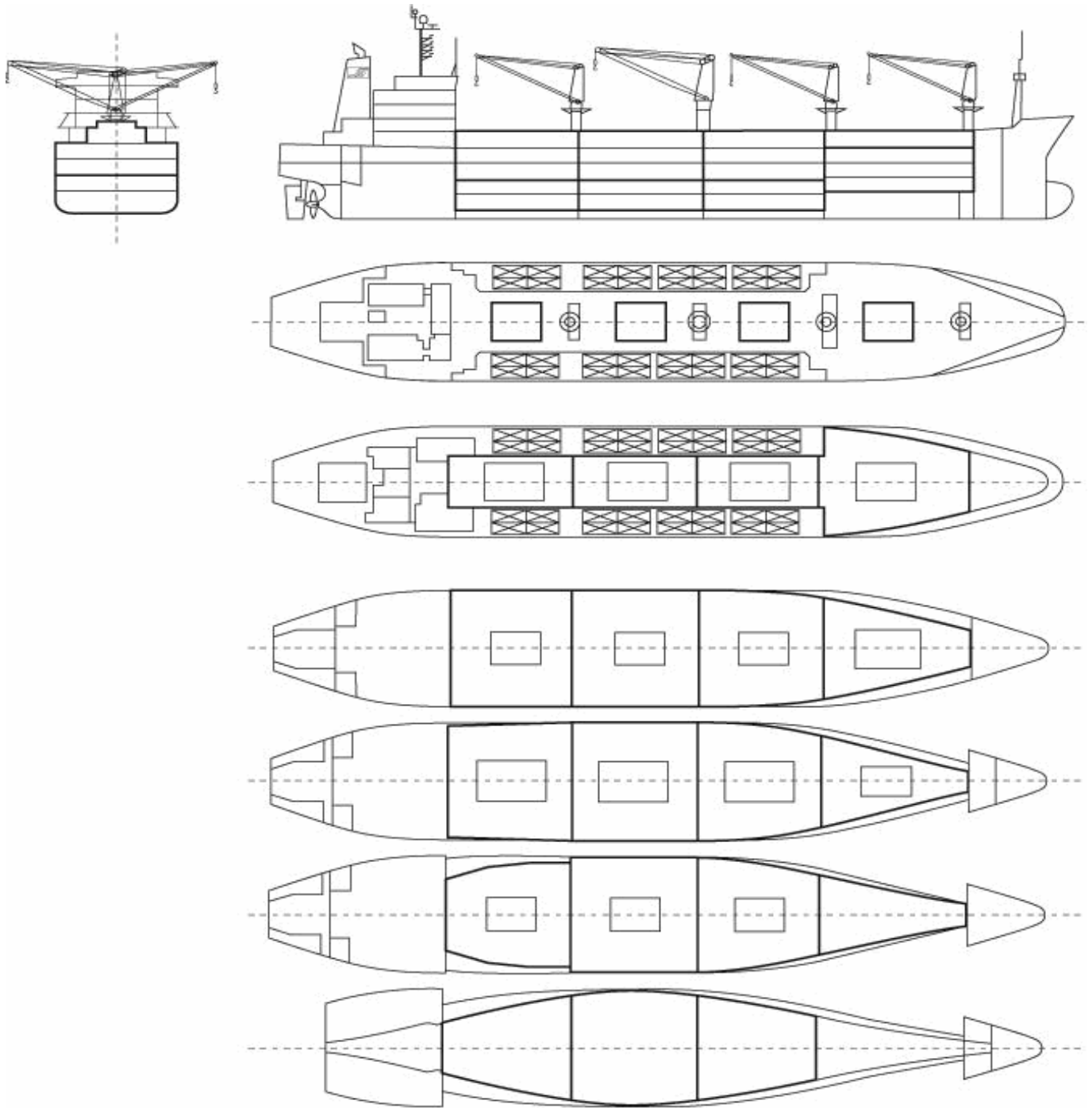
Vessel participates in fuel testing program. Samples are taken during each fuel from each supplied grade. Costs involved to be equally shared between Owners and Charterers. Vessel shall not consume any supplied fuel without having received full fuel analysis report confirming the fuel's quality.

It is Charterers obligation to make sure that fuels with sulphur content higher than 0.5% are either consumed or removed from the vessel at his cost prior 01 January 2020.



FORTUNA BAY

542,470 cbft / 6,351 sqm / 5,691 pallets



General Remarks

- Pallet Intake figures are indication only. The figures are based on a stowage factor of 1.32 pallet/sqm in reefer holds, full load of reefer containers based on the standard voyage with 20 pallets in each container

